

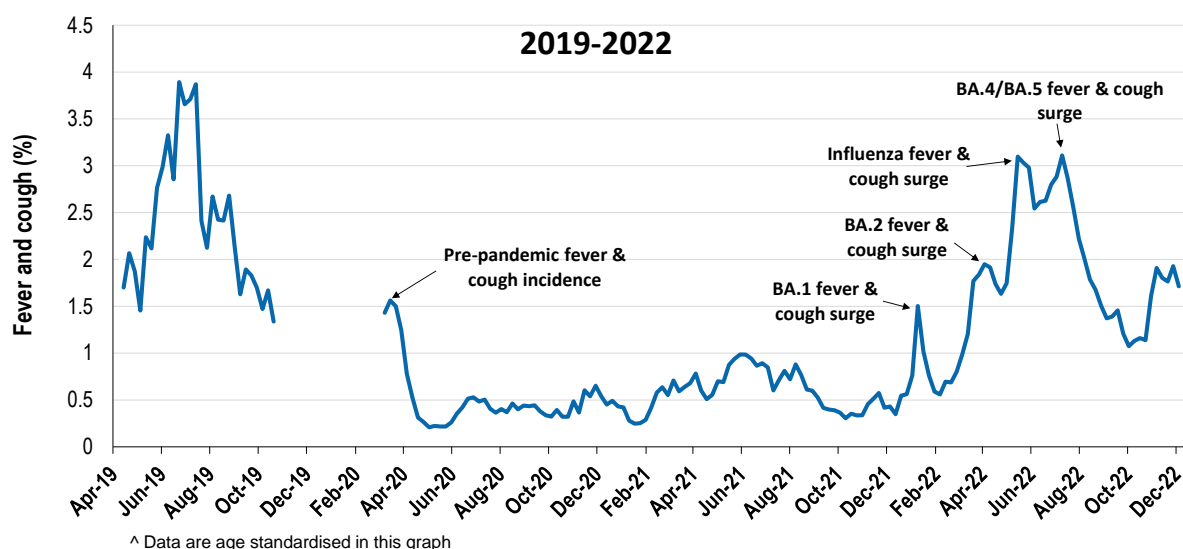
Respiratory illness levels have decreased this week

26,122 participants this week

Respiratory illness activity*:

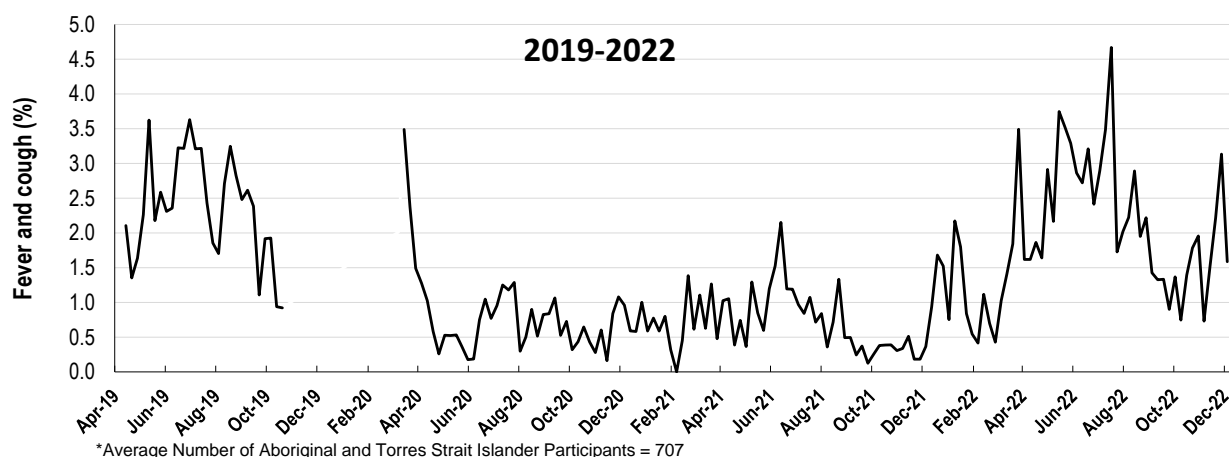
*Respiratory illness activity is defined as fever & cough for this report

1.7% this week: respiratory illness activity is low



Respiratory illness activity among Aboriginal and Torres Strait Islander participants

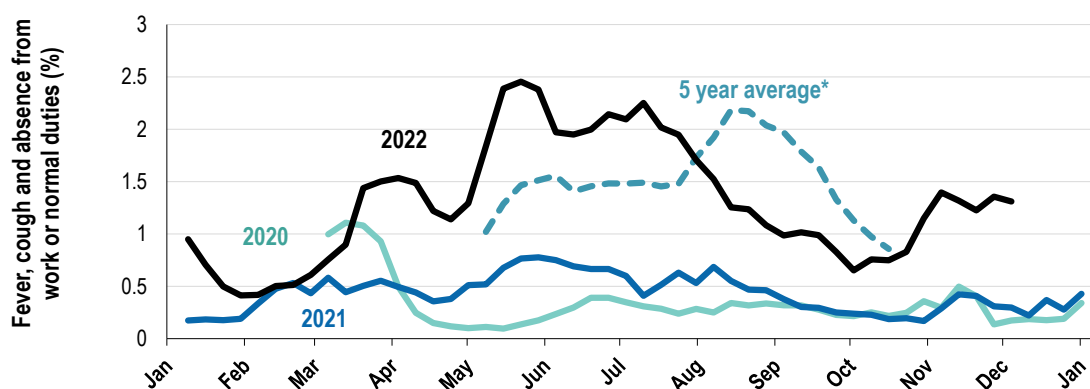
1.6% this week: respiratory illness activity is low



Respiratory illness severity: 38.3% of participants with fever and cough sought medical advice this week		
Respiratory illness Severity	Week ending 04 December 2022	Week ending 27 November 2022
	number (%)	number (%)
Number of participants	26122 (100%)	26168 (100%)
Fever & cough	397 (1.5%)	386 (1.5%)
Fever, cough & time-off normal duties	289 (1.1%)	274 (1%)
Fever, cough & 3 or more days off work/normal duties	195 (0.7%)	185 (0.7%)
Number of participants with fever and cough	397 (100%)	386 (100%)
*Sought medical advice for fever and cough	152 (38.3%)	177 (45.9%)
Admitted to hospital	3 (0.8%)	4 (1%)
Tested for influenza	35 (8.8%)	37 (9.6%)
Tested, result positive for influenza	4 (1%)	2 (0.5%)
Tested for COVID-19 by PCR	91 (22.9%)	103 (26.7%)
Tested for COVID-19 by PCR, result positive	49 (12.3%)	55 (14.2%)
Tested for COVID-19 by RAT	353 (88.9%)	347 (89.9%)
Tested for COVID-19 by RAT, result positive	220 (55.4%)	205 (53.1%)

*Includes those who sought medical advice from a general practitioner, COVID-19 clinic, emergency department, or were admitted to hospital for fever & cough

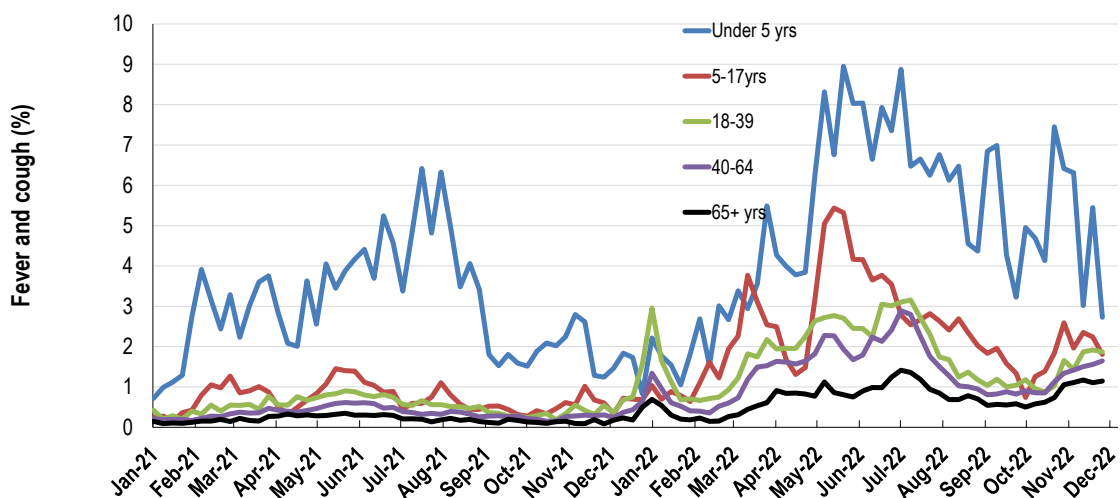
Fever, cough and absence from work or normal duties (Australia):



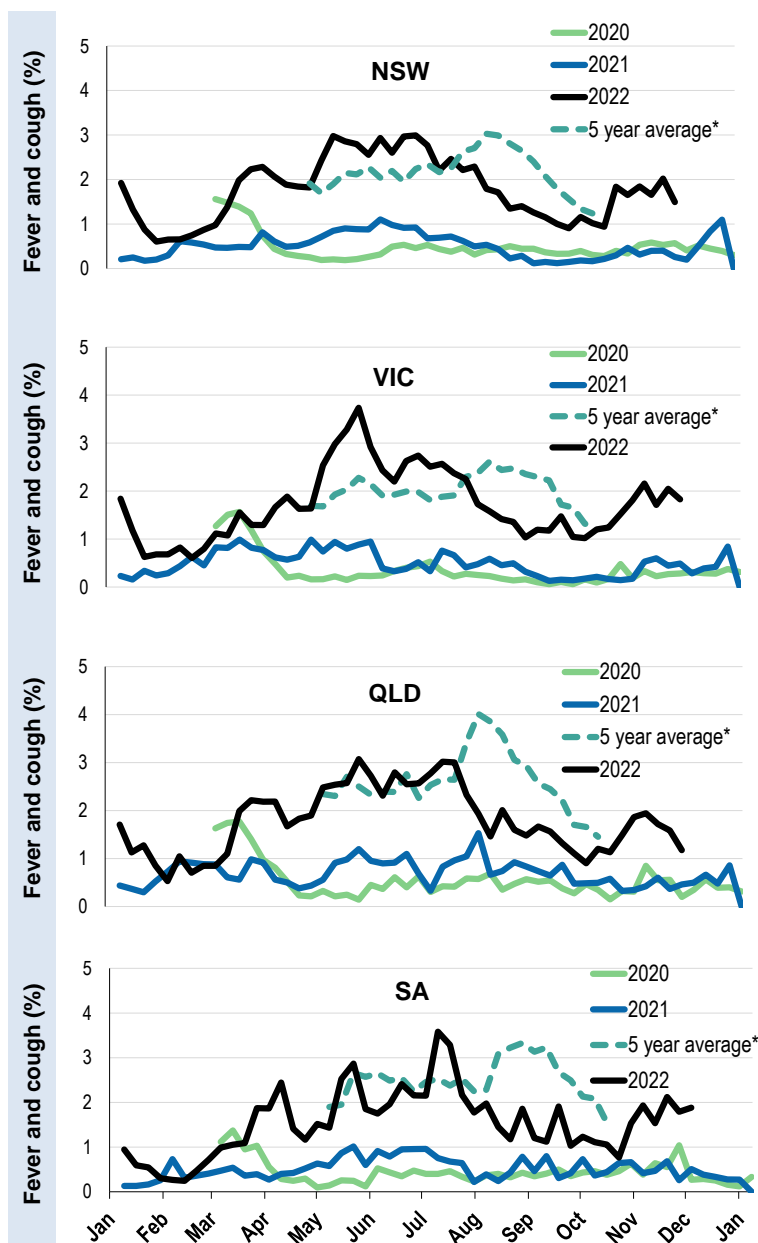
*5 year average is calculated using 2015, 2016, 2017, 2018 and 2019 data

^ Data are age standardised in this graph

Respiratory illness activity by age group in 2021 and 2022 (Australia):

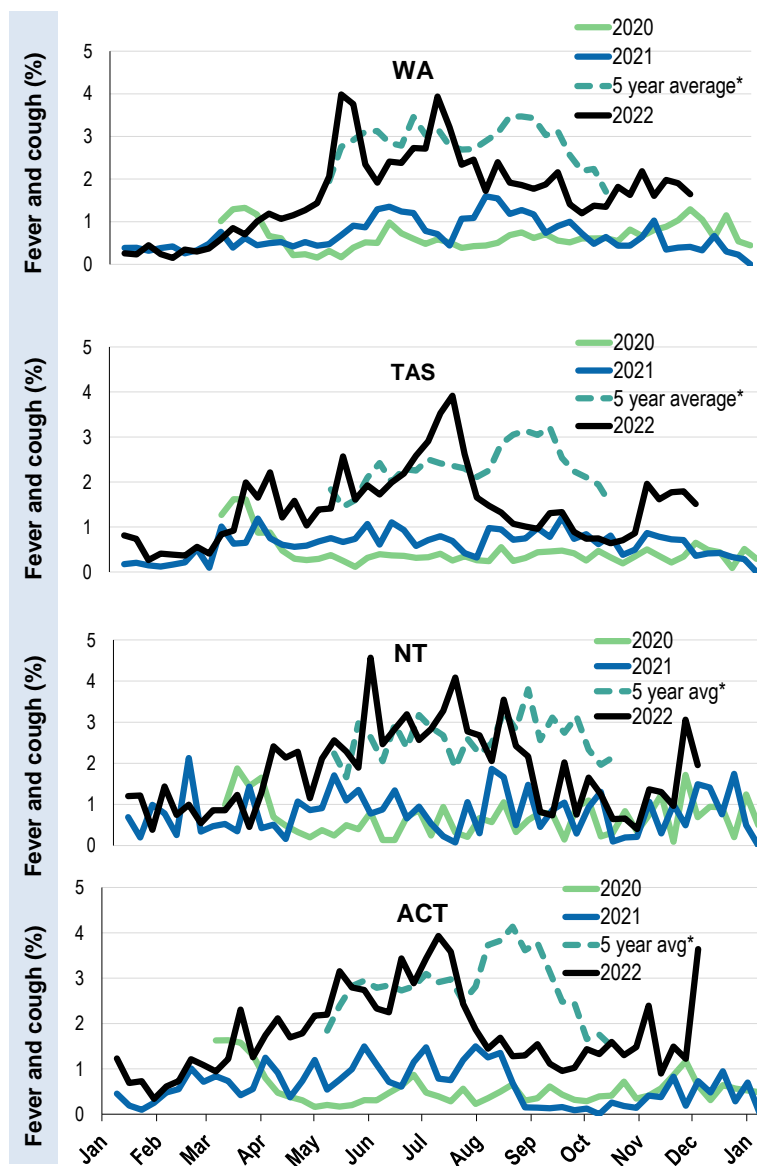


Respiratory illness activity by state/territory (age standardised):



*5 year average is calculated using 2015, 2016, 2017, 2018 and 2019 data

Respiratory illness activity by state/territory (age standardised):



*5 year average is calculated using 2015, 2016, 2017, 2018 and 2019 data

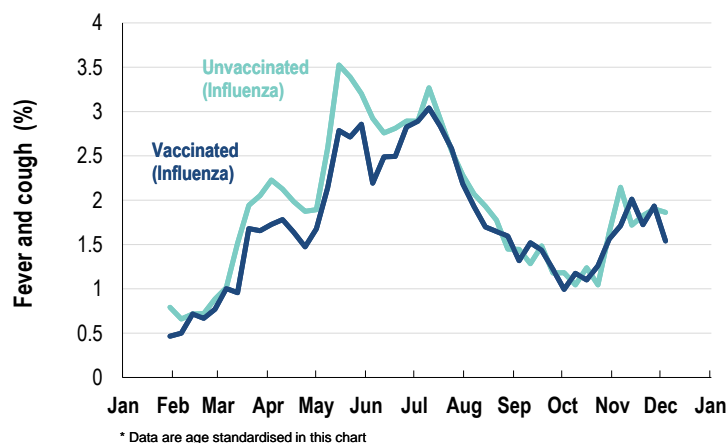
Participation:

Week participants (Week last week)

State	Participants	%	Rate/100,000 population
NSW	9298	35.6%	113.6
VIC	4895	18.7%	73.7
QLD	3024	11.6%	57.7
SA	2458	9.4%	138.7
WA	2622	10.0%	97.6
TAS	1867	7.1%	345.2
NT	574	2.2%	233.4
ACT	1384	5.3%	321.5
AUS	26122	100.0%	101.4

Vaccination rates:

Vaccinated participants:	COVID-19 vaccine				Influenza (%)
	At least 1 dose (%)	At least 2 doses (%)	3 doses (%)	4 doses (%)	
<5 years	0.9	0.5			45.5
5-11 years	85.5	80.5	1.7	0.0	41.8
12-17 years	97.3	96.7	20.6	1.1	32.6
18-64 years	99.2	99.1	94.1	54.8	68.5
65+ years	99.4	99.3	97.9	91.1	84.7
Working with patients	99.5	99.5	97.4	63.3	81.1
Aboriginal and/or Torres Strait Islander	94.9	94.0	77.5	43.5	62.9
Vaccinated overall (%)	98.0	97.7	89.1	63.4	71.8

Respiratory illness activity by self-reported influenza vaccination status, 2022 (Australia):

Respiratory illness activity by self-reported COVID-19 vaccination status, 2022 (Australia):
