

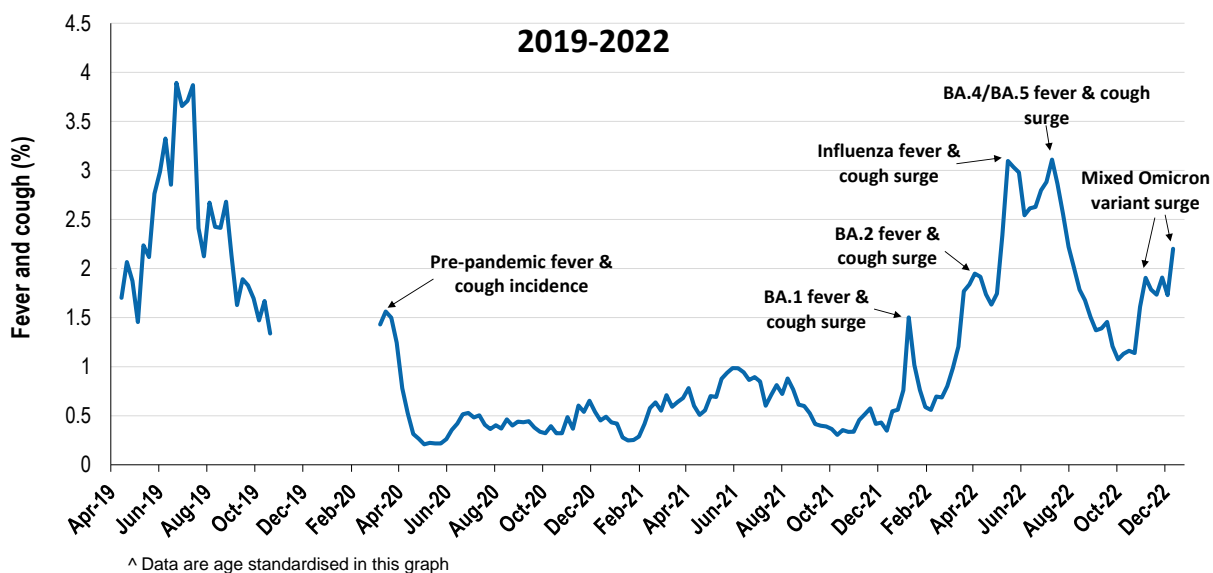
## Respiratory illness levels have increased across all age groups

26,274 participants this week

### Respiratory illness activity\*:

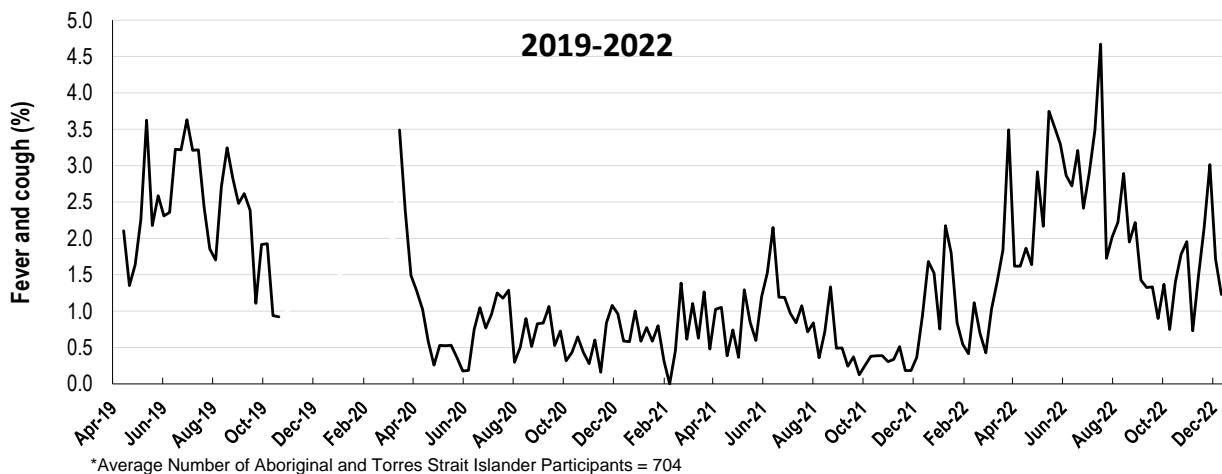
\*Respiratory illness activity is defined as fever & cough for this report

**2.2% this week and 1.7% last week**



### Respiratory illness activity among Aboriginal and Torres Strait Islander participants

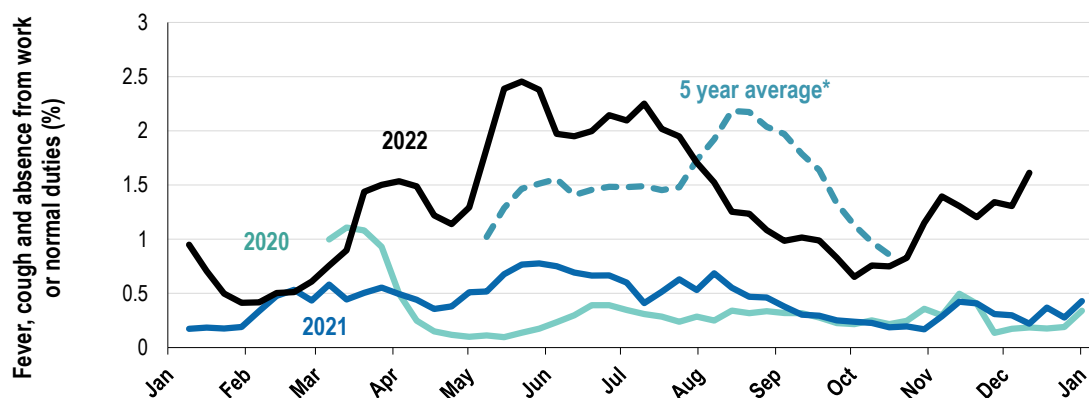
**1.2% this week: respiratory illness activity is low**



Respiratory illness severity: 35.1% of participants with fever and cough sought medical advice this week		
Respiratory illness Severity	Week ending 11 December 2022	Week ending 04 December 2022
	number (%)	number (%)
<b>Number of participants</b>	26274 (100%)	26122 (100%)
Fever & cough	473 (1.8%)	397 (1.5%)
Fever, cough & time-off normal duties	337 (1.3%)	286 (1.1%)
Fever, cough & 3 or more days off work/normal duties	224 (0.9%)	194 (0.7%)
<b>Number of participants with fever and cough</b>	473 (100%)	397 (100%)
*Sought medical advice for fever and cough	166 (35.1%)	168 (42.3%)
Admitted to hospital	1 (0.2%)	5 (1.3%)
Tested for influenza	30 (6.3%)	39 (9.8%)
Tested, result positive for influenza	6 (1.3%)	4 (1%)
Tested for COVID-19 by PCR	84 (17.8%)	97 (24.4%)
Tested for COVID-19 by PCR, result positive	50 (10.6%)	54 (13.6%)
Tested for COVID-19 by RAT	421 (89%)	356 (89.7%)
Tested for COVID-19 by RAT, result positive	270 (57.1%)	226 (56.9%)

\*Includes those who sought medical advice from a general practitioner, COVID-19 clinic, emergency department, or were admitted to hospital for fever & cough

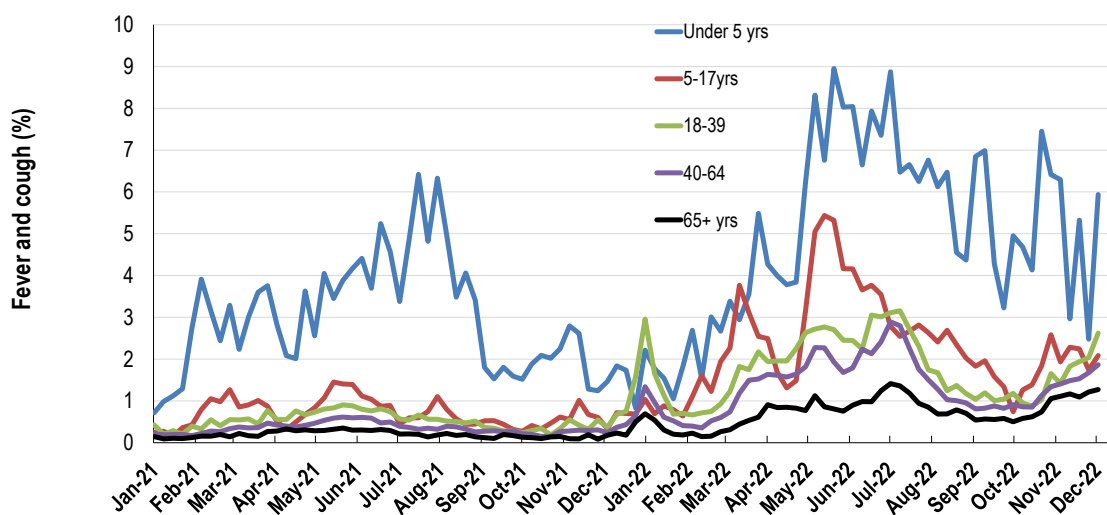
**Fever, cough and absence from work or normal duties (Australia):**



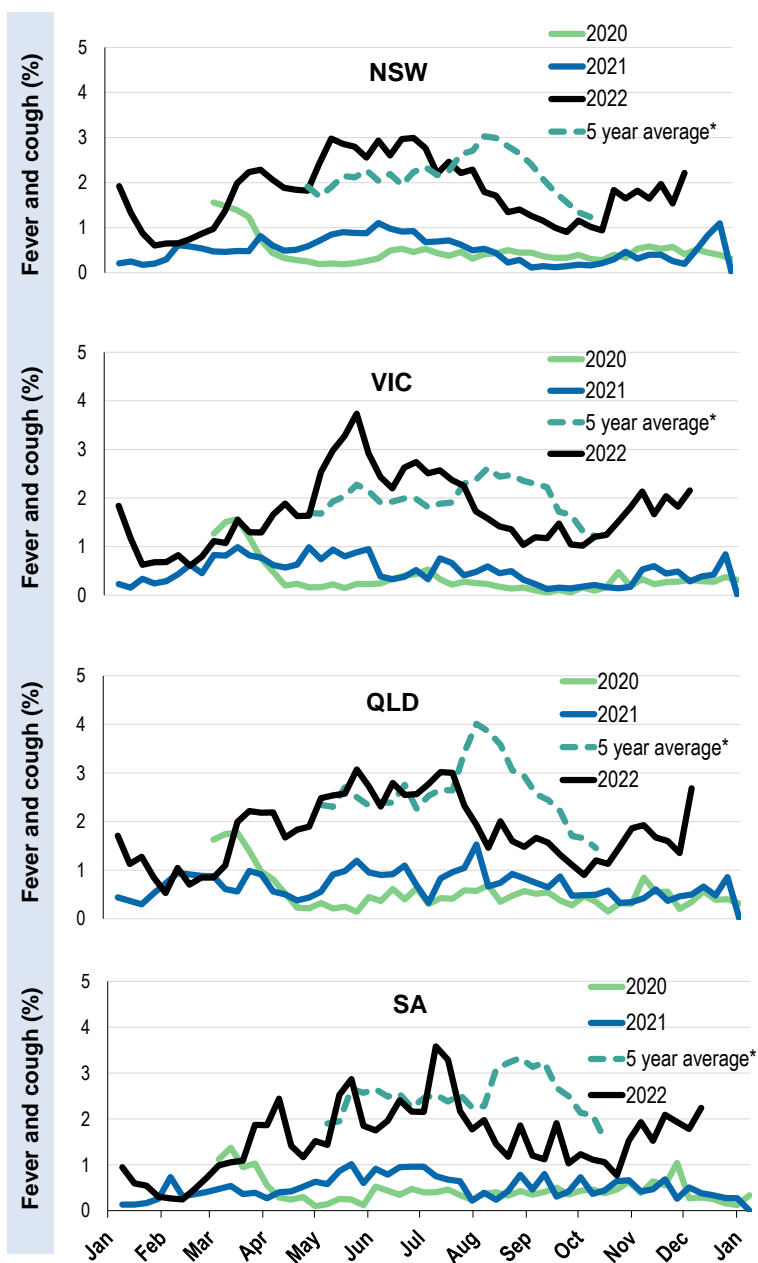
\*5 year average is calculated using 2015, 2016, 2017, 2018 and 2019 data

^ Data are age standardised in this graph

**Respiratory illness activity by age group in 2021 and 2022 (Australia):**

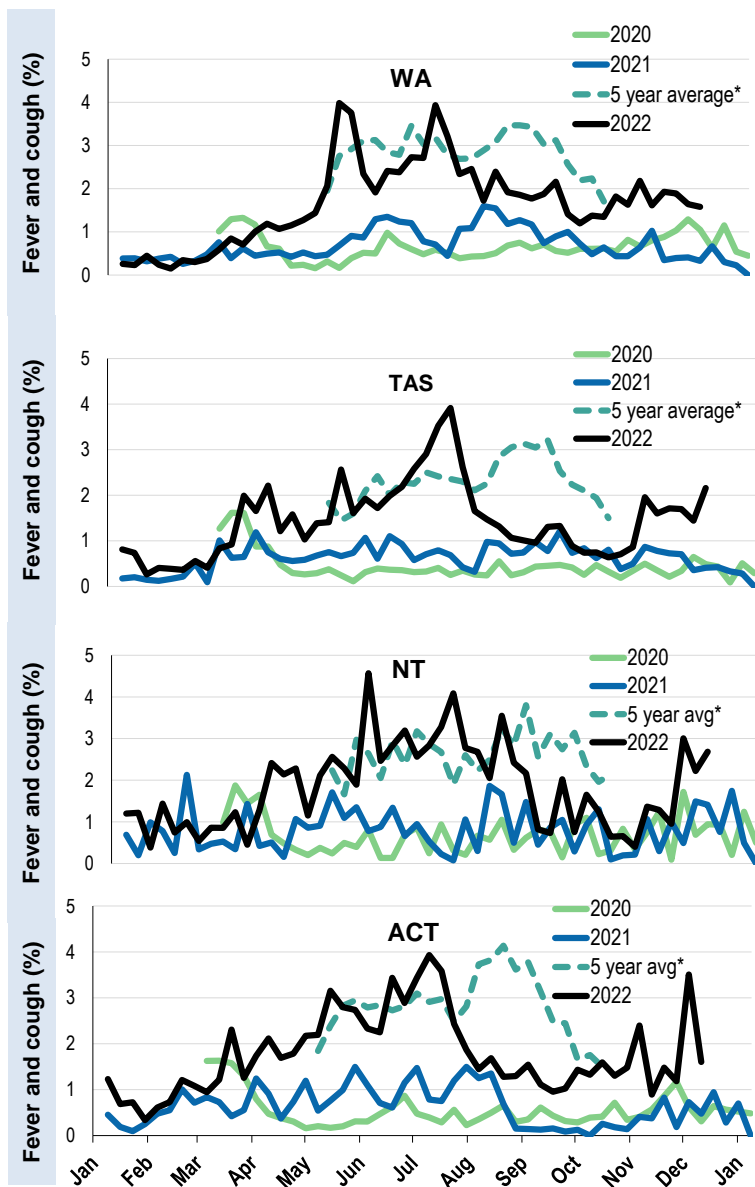


Respiratory illness activity by state/territory (age standardised):



\*5 year average is calculated using 2015, 2016, 2017, 2018 and 2019 data

Respiratory illness activity by state/territory (age standardised):



\*5 year average is calculated using 2015, 2016, 2017, 2018 and 2019 data

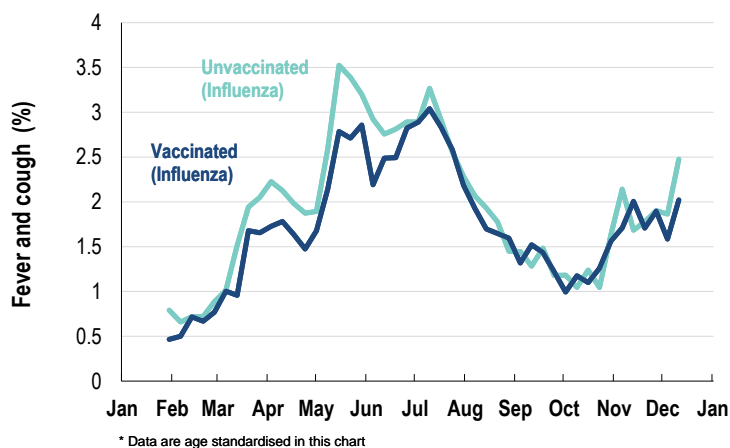
**Participation:**

Week participants (Week last week)

State	Participants	% Rate/100,000 population
NSW	9422	35.9% <b>115.1</b>
VIC	4837	18.4% <b>72.8</b>
QLD	3071	11.7% <b>58.6</b>
SA	2433	9.3% <b>137.2</b>
WA	2667	10.2% <b>99.3</b>
TAS	1905	7.3% <b>352.3</b>
NT	552	2.1% <b>224.5</b>
ACT	1387	5.3% <b>322.2</b>
AUS	26274	100.0% <b>102.0</b>

**Vaccination rates:**

Vaccinated participants:	COVID-19 vaccine				Influenza (%)
	At least 1 dose (%)	At least 2 doses (%)	3 doses (%)	4 doses (%)	
<5 years	0.9	0.5			44.7
5-11 years	86.3	82.0	2.0	0.0	43.0
12-17 years	97.4	96.5	21.5	0.8	31.2
18-64 years	99.3	99.1	94.4	55.6	68.2
65+ years	99.4	99.3	98.0	91.4	84.6
Working with patients	99.5	99.5	97.4	63.9	80.4
Aboriginal and/or Torres Strait Islander	96.0	94.8	78.8	45.2	63.1
<b>Vaccinated overall (%)</b>	<b>98.0</b>	<b>97.7</b>	<b>89.3</b>	<b>64.0</b>	<b>71.6</b>

**Respiratory illness activity by self-reported influenza vaccination status, 2022 (Australia):**

**Respiratory illness activity by self-reported COVID-19 vaccination status, 2022 (Australia):**
