

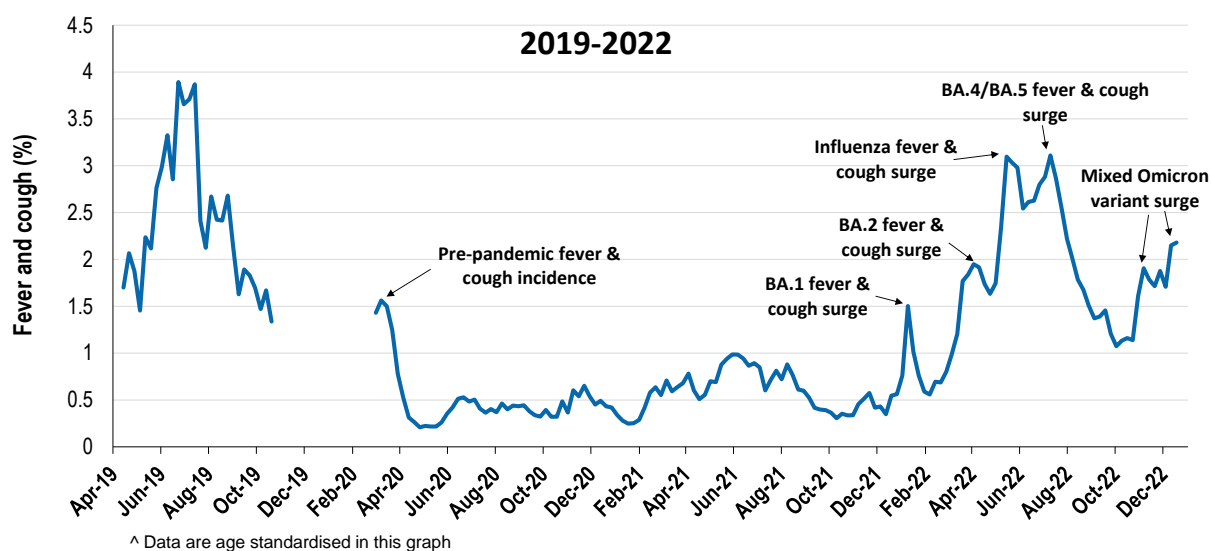
Respiratory illness levels are steady at 2.2% this week

25,513 participants this week

Respiratory illness activity*:

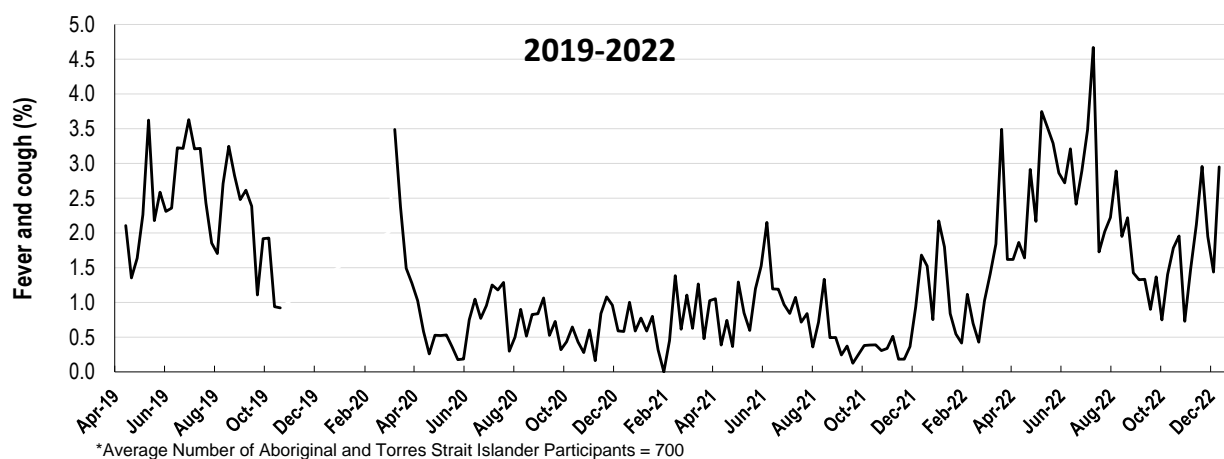
*Respiratory illness activity is defined as fever & cough for this report

2.2% this week and 2.2% last week



Respiratory illness activity among Aboriginal and Torres Strait Islander participants

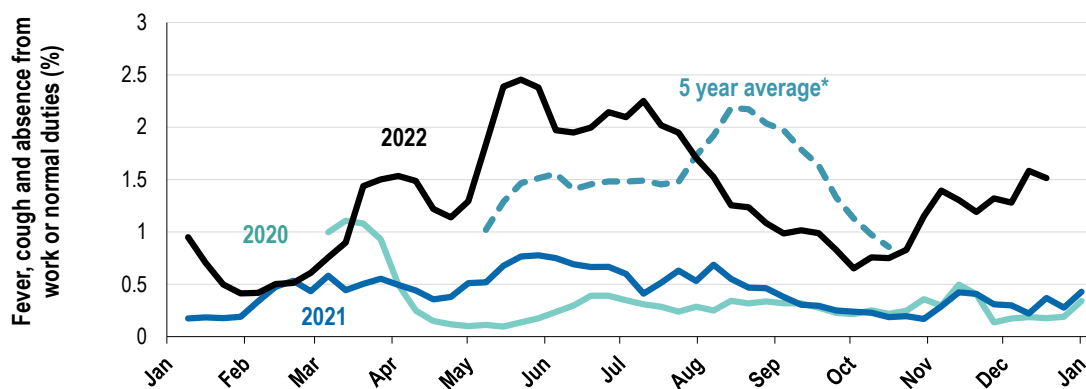
3% this week and 1.4% last week



Respiratory illness severity: 36.7% of participants with fever and cough sought medical advice this week		
Respiratory illness Severity	Week ending 18 December 2022	Week ending 11 December 2022
	number (%)	number (%)
Number of participants	25513 (100%)	26274 (100%)
Fever & cough	436 (1.7%)	473 (1.8%)
Fever, cough & time-off normal duties	295 (1.2%)	336 (1.3%)
Fever, cough & 3 or more days off work/normal duties	214 (0.8%)	223 (0.8%)
Number of participants with fever and cough	436 (100%)	473 (100%)
*Sought medical advice for fever and cough	160 (36.7%)	185 (39.1%)
Admitted to hospital	3 (0.7%)	1 (0.2%)
Tested for influenza	22 (5%)	36 (7.6%)
Tested, result positive for influenza	1 (0.2%)	7 (1.5%)
Tested for COVID-19 by PCR	75 (17.2%)	93 (19.7%)
Tested for COVID-19 by PCR, result positive	45 (10.3%)	53 (11.2%)
Tested for COVID-19 by RAT	382 (87.6%)	428 (90.5%)
Tested for COVID-19 by RAT, result positive	262 (60.1%)	280 (59.2%)

*Includes those who sought medical advice from a general practitioner, Aboriginal and Torres Strait Islander Health Clinic, COVID-19 clinic, emergency department, or were admitted to hospital for fever & cough

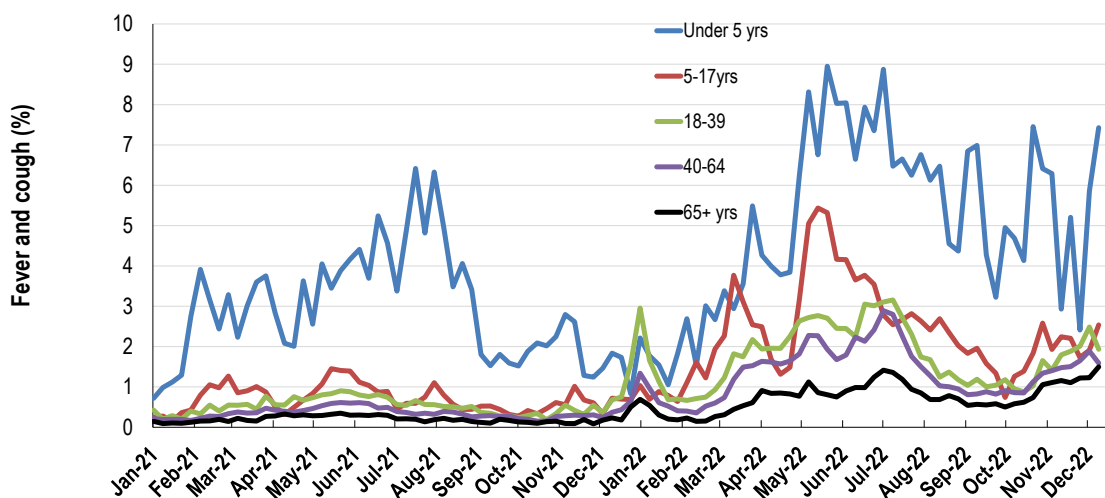
Fever, cough and absence from work or normal duties (Australia):



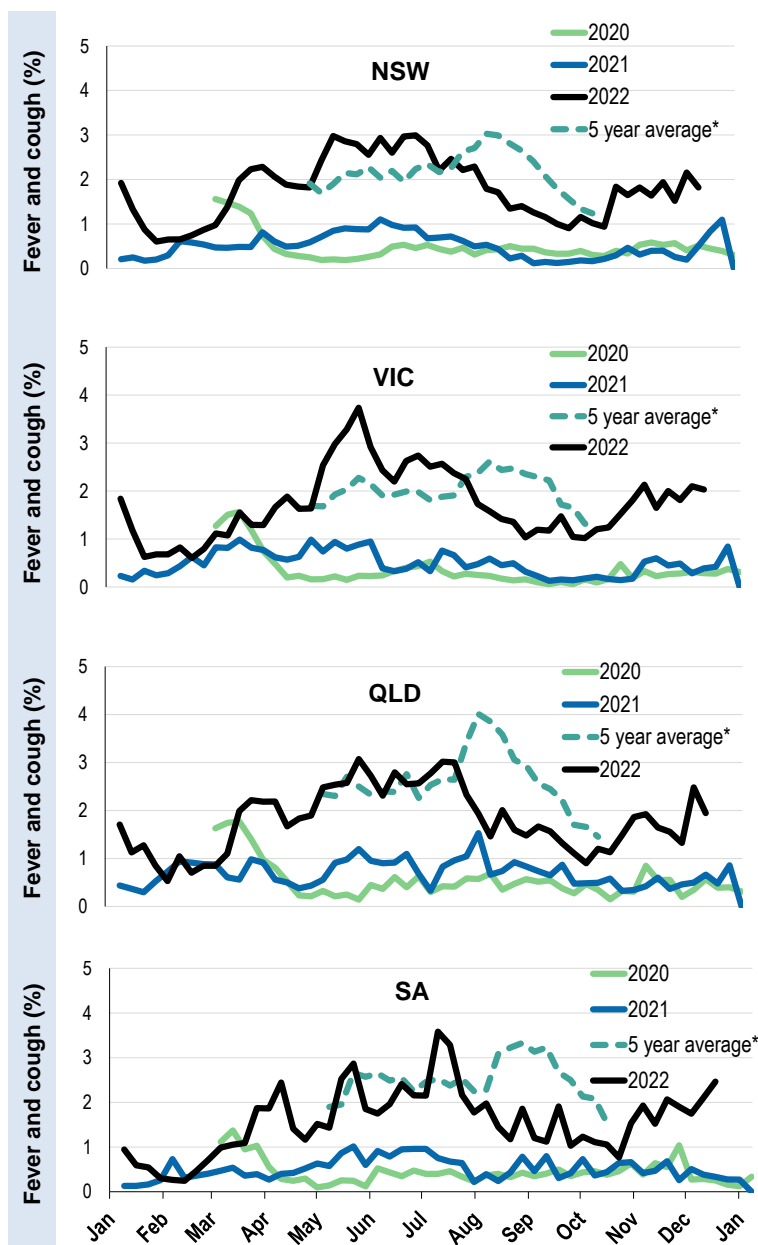
*5 year average is calculated using 2015, 2016, 2017, 2018 and 2019 data

^ Data are age standardised in this graph

Respiratory illness activity by age group in 2021 and 2022 (Australia):

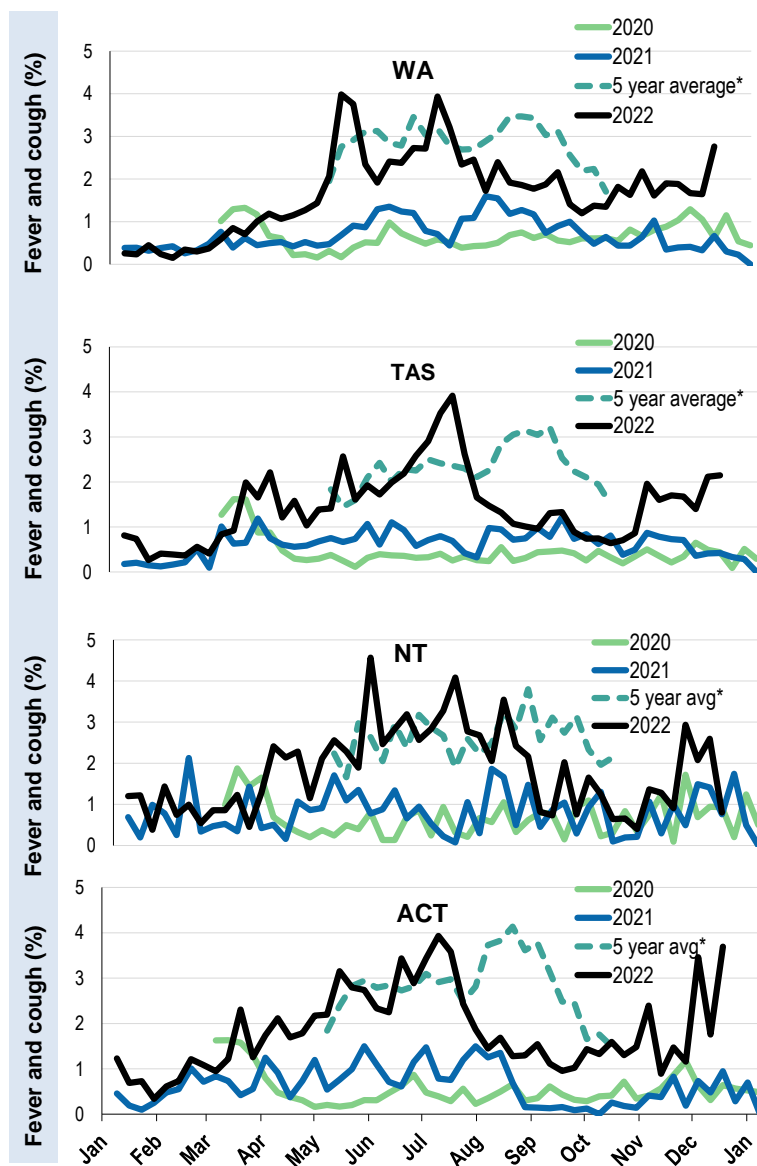


Respiratory illness activity by state/territory (age standardised):



*5 year average is calculated using 2015, 2016, 2017, 2018 and 2019 data

Respiratory illness activity by state/territory (age standardised):



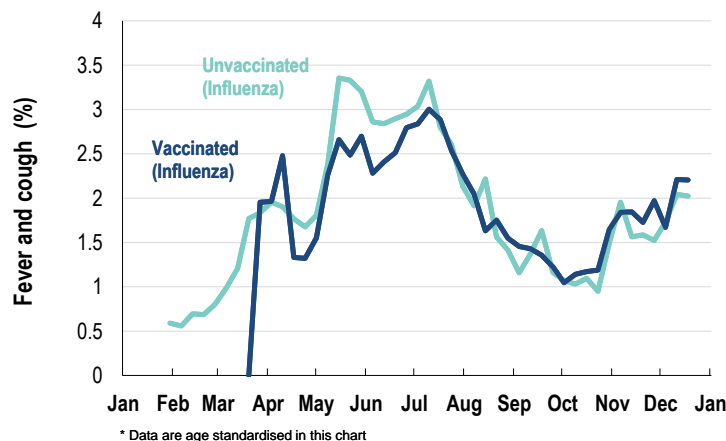
*5 year average is calculated using 2015, 2016, 2017, 2018 and 2019 data

Participation:
Week participants (Week last week)

State	Participants	% Rate/100,000 population
NSW	9129	35.8% 111.5
VIC	4733	18.6% 71.2
QLD	2989	11.7% 57.0
SA	2414	9.5% 136.2
WA	2537	9.9% 94.5
TAS	1824	7.1% 337.3
NT	522	2.0% 212.3
ACT	1365	5.4% 317.1
AUS	25513	100.0% 99.1

Vaccination rates:

Vaccinated participants:	COVID-19 vaccine				Influenza (%)
	At least 1 dose (%)	At least 2 doses (%)	3 doses (%)	4 doses (%)	
<5 years	1.5	0.5			69.3
5-11 years	85.7	81.1	1.8	0.0	64.3
12-17 years	97.7	97.2	22.4	1.1	57.9
18-64 years	99.3	99.1	94.5	56.9	82.7
65+ years	99.3	99.2	98.0	91.4	94.6
Working with patients	99.5	99.5	97.8	65.2	90.8
Aboriginal and/or Torres Strait Islander	95.7	94.4	78.4	43.0	75.1
Vaccinated overall (%)	98.1	97.8	89.6	65.1	85.4

Respiratory illness activity by self-reported influenza vaccination status, 2022 (Australia):

Respiratory illness activity by self-reported COVID-19 vaccination status, 2022 (Australia):
