

Weekly Interim Report New Zealand

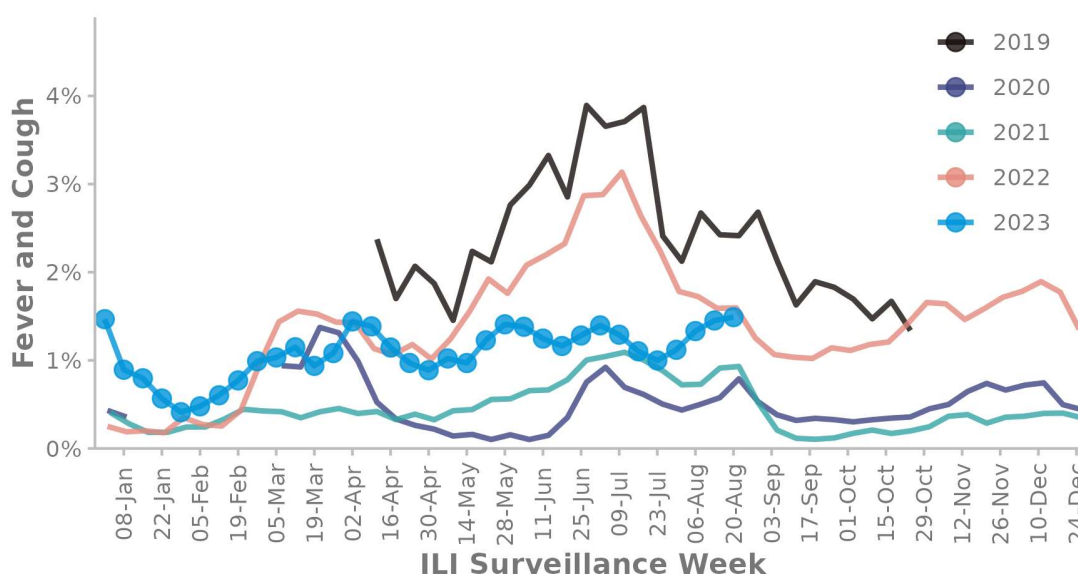
ESR

Week Ending 20 August 2023

rising levels of respiratory illness activity. Fever, cough and absence from normal duties was reported by 1.1% participants

(FluTracking is an online self-reporting respiratory illness surveillance system. Care should be taken when interpreting this report)

FIGURE 1. FLUTRACKING FEVER AND COUGH SYMPTOMS



This survey was sent on 21 August 2023 01:01 AM and by 24 August 2023 08:30 am we had received 35,637 responses (35,782 last week) from 22,066 people responding for themselves and 13,571 household members across New Zealand.

Across New Zealand, fever AND cough was reported by 1.5% of participants. Fever, cough and absence from normal duties was reported by 1.1% participants. fever AND cough was reported by 6.6% of participants aged less than 5 years, 3.7% of participants aged 5-17 years, 1.6% of participants aged 18-64 years, and 0.7% of participants aged 65 years or older.

The data presented here should not be treated as authoritative and should always be interpreted together with other trusted sources from the [New Zealand Influenza Intelligence Report](#)

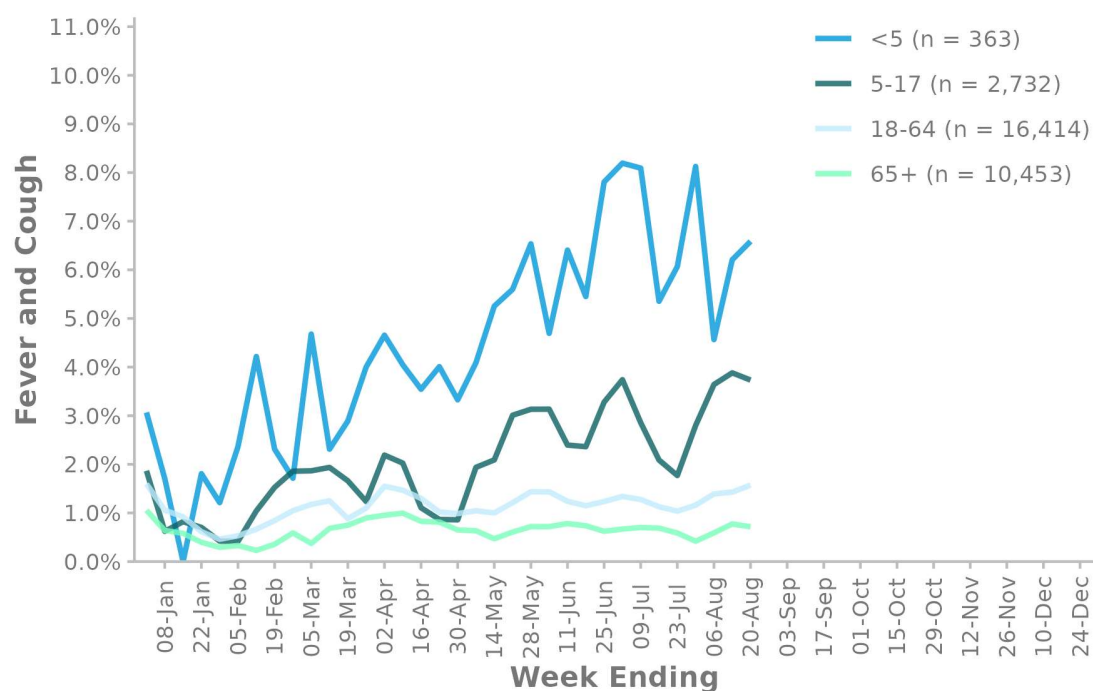
TABLE 1. RESPONDENT NUMBERS BY JURISDICTION

Jurisdiction	Respondents	Percentage
North Island	26,001	73%
South Island	9,636	27%
New Zealand	35,637	100%

TABLE 2. SELF-REPORTED COVID-19 AND INFLUENZA TESTING

	Week Ending	
(% of fever and cough)	13 August 2023	20 August 2023
Tested for influenza	14 (2.7%)	12 (2.3%)
Result positive for influenza	5 (1%)	2 (0.4%)
Tested for COVID-19	365 (71.6%)	349 (65.7%)
Result positive for COVID-19	80 (15.7%)	75 (14.1%)

FIGURE 2. FLUTRACKING FEVER AND COUGH SYMPTOMS BY AGE GROUP



n = number of participants for current week

FIGURE 3. FLUTRACKING FEVER AND COUGH SYMPTOMS BY INFLUENZA VACCINATION STATUS



TABLE 3. COVID-19 VACCINATION RATES

Vaccinated participants	At least 1 dose (%)	... 2 doses (%)	... 3 doses (%)	... 4 doses (%)
5-17 years	92.4	85.3	8.6	0.8
18-64 years	99.6	99.5	95.5	62.0
65 + years	99.7	99.6	98.4	89.6
Working with patients	99.7	99.5	98.7	76.5
Vaccinated overall	97.9	97.2	88.1	66.5

Contact the FluTracking Team: flutracking.nz@esr.cri.nz To join the survey or find out more information:
info.flutracking.net