

Weekly Interim Report New Zealand

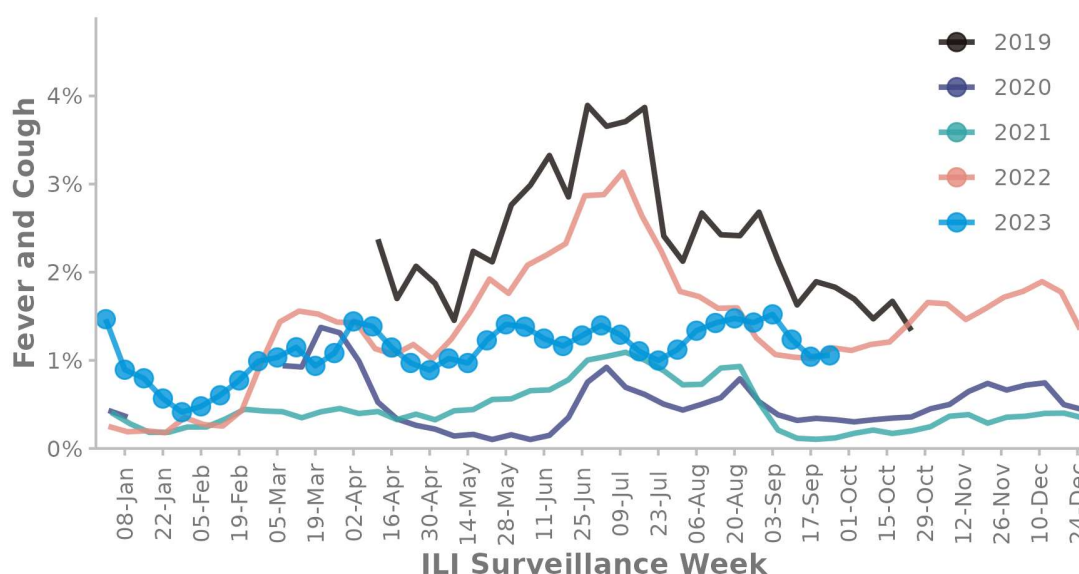
ESR

Week Ending 24 September 2023

Low levels of respiratory illness activity. Fever, cough and absence from normal duties was reported by 0.8% participants

(FluTracking is an online self-reporting respiratory illness surveillance system. Care should be taken when interpreting this report)

FIGURE 1. FLUTRACKING FEVER AND COUGH SYMPTOMS



This survey was sent on 25 September 2023 01:01 AM and by 28 September 2023 08:30 am we had received 33,319 responses (33,933 last week) from 20,857 people responding for themselves and 12,462 household members across New Zealand.

Across New Zealand, fever AND cough was reported by 1.1% of participants. Fever, cough and absence from normal duties was reported by 0.8% participants. fever AND cough was reported by 4.8% of participants aged less than 5 years, 2% of participants aged 5-17 years, 1.1% of participants aged 18-64 years, and 0.7% of participants aged 65 years or older.

The data presented here should not be treated as authoritative and should always be interpreted together with other trusted sources from the [New Zealand Influenza Intelligence Report](#)

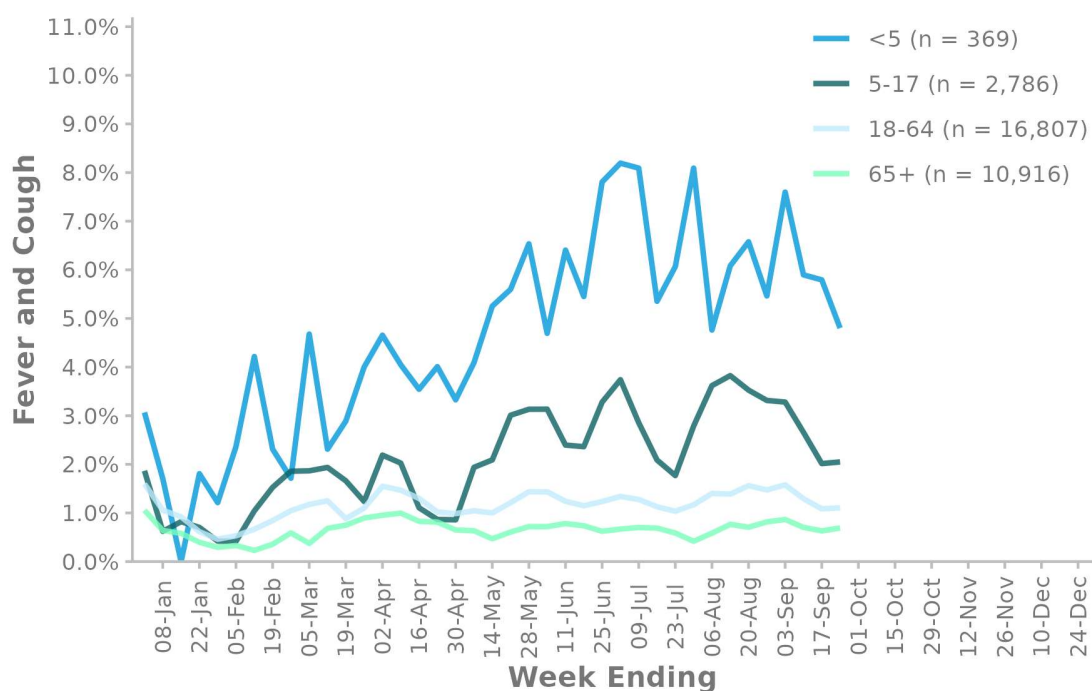
TABLE 1. RESPONDENT NUMBERS BY JURISDICTION

Jurisdiction	Respondents	Percentage
North Island	24,259	72.8%
South Island	9,060	27.2%
New Zealand	33,319	100%

TABLE 2. SELF-REPORTED COVID-19 AND INFLUENZA TESTING

	Week Ending	
(% of fever and cough)	17 September 2023	24 September 2023
Tested for influenza	8 (2.3%)	8 (2.3%)
Result positive for influenza	3 (0.8%)	2 (0.6%)
Tested for COVID-19	244 (68.7%)	234 (66.5%)
Result positive for COVID-19	50 (14.1%)	74 (21%)

FIGURE 2. FLUTRACKING FEVER AND COUGH SYMPTOMS BY AGE GROUP



n = number of participants for current week

FIGURE 3. FLUTRACKING FEVER AND COUGH SYMPTOMS BY INFLUENZA VACCINATION STATUS



TABLE 3. COVID-19 VACCINATION RATES

Vaccinated participants	At least 1 dose (%)	... 2 doses (%)	... 3 doses (%)	... 4 doses (%)
5-17 years	91.7	84.7	8.2	0.9
18-64 years	99.6	99.5	95.6	63.2
65 + years	99.7	99.6	98.4	89.9
Working with patients	99.7	99.6	98.7	76.9
Vaccinated overall	98.0	97.3	88.7	68.1

Contact the FluTracking Team: flutracking.nz@esr.cri.nz To join the survey or find out more information:
info.flutracking.net