

Weekly Interim Report New Zealand

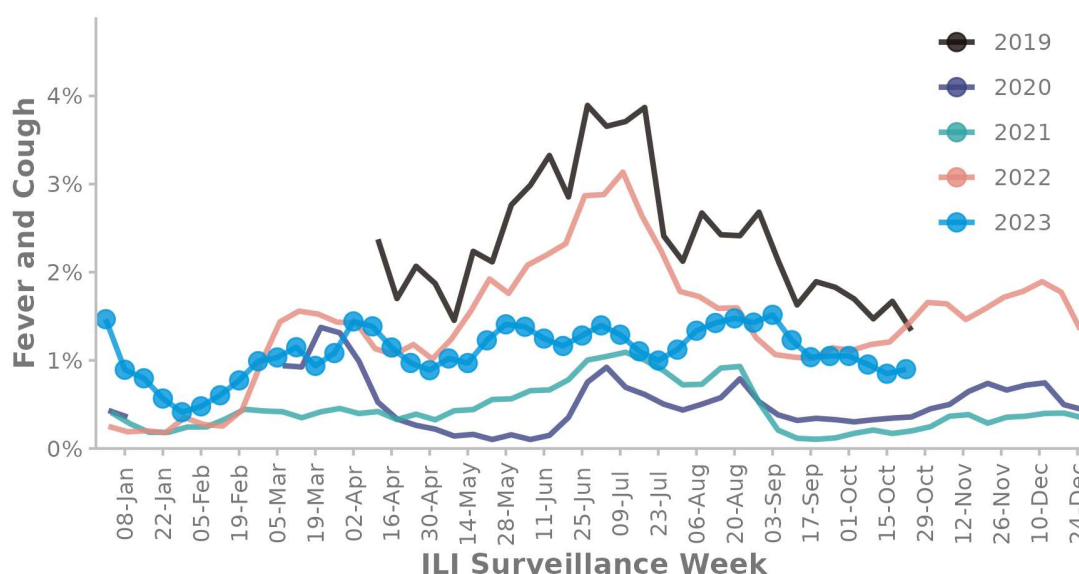
ESR

Week Ending 22 October 2023

Low levels of respiratory illness activity. Fever, cough and absence from normal duties was reported by 0.7% participants

(FluTracking is an online self-reporting respiratory illness surveillance system. Care should be taken when interpreting this report)

FIGURE 1. FLUTRACKING FEVER AND COUGH SYMPTOMS



This survey was sent on 23 October 2023 01:01 AM and by 26 October 2023 08:30 am we had received 32,460 responses (32,903 last week) from 20,399 people responding for themselves and 12,061 household members across New Zealand.

Across New Zealand, fever AND cough was reported by 0.9% of participants. Fever, cough and absence from normal duties was reported by 0.7% participants. fever AND cough was reported by 4% of participants aged less than 5 years, 1.6% of participants aged 5-17 years, 1% of participants aged 18-64 years, and 0.6% of participants aged 65 years or older.

The data presented here should not be treated as authoritative and should always be interpreted together with other trusted sources from the [New Zealand Influenza Intelligence Report](#)

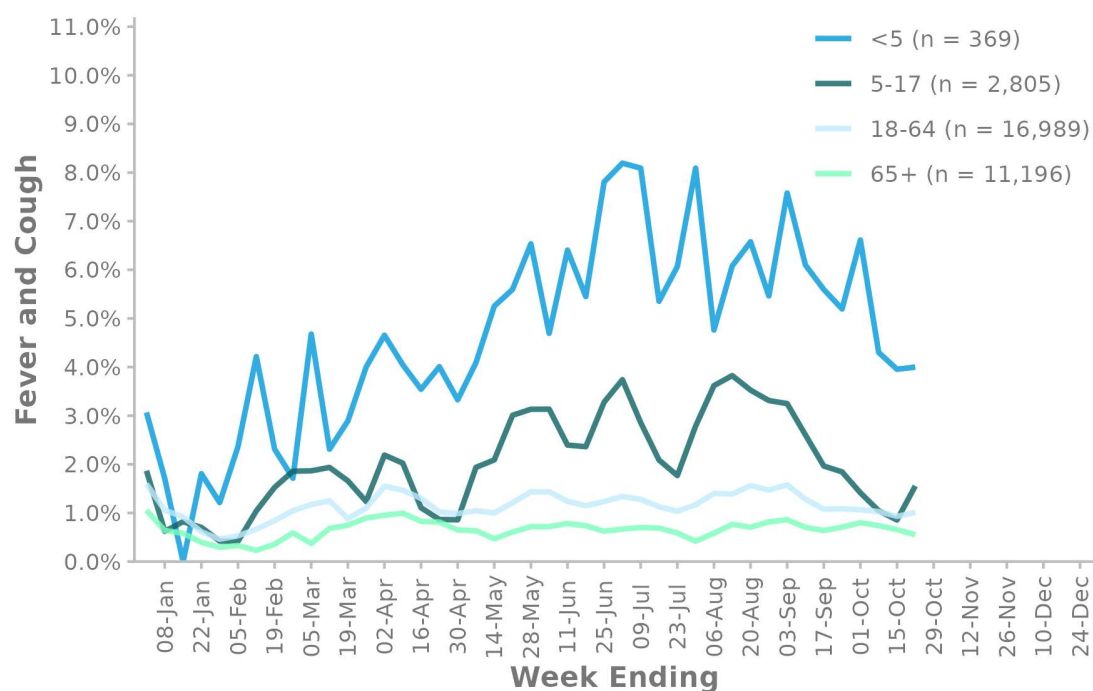
TABLE 1. RESPONDENT NUMBERS BY JURISDICTION

Jurisdiction	Respondents	Percentage
North Island	23,659	72.9%
South Island	8,801	27.1%
New Zealand	32,460	100%

TABLE 2. SELF-REPORTED COVID-19 AND INFLUENZA TESTING

(% of fever and cough)	Week Ending	
	15 October 2023	22 October 2023
Tested for influenza	9 (3.2%)	4 (1.4%)
Result positive for influenza	0 (0%)	0 (0%)
Tested for COVID-19	226 (79.6%)	223 (76.4%)
Result positive for COVID-19	104 (36.6%)	108 (37%)

FIGURE 2. FLUTRACKING FEVER AND COUGH SYMPTOMS BY AGE GROUP



n = number of participants for current week

FIGURE 3. FLUTRACKING FEVER AND COUGH SYMPTOMS BY INFLUENZA VACCINATION STATUS



TABLE 3. COVID-19 VACCINATION RATES

Vaccinated participants	At least 1 dose (%)	... 2 doses (%)	... 3 doses (%)	... 4 doses (%)
5-17 years	92.0	85.2	8.5	1.0
18-64 years	99.7	99.6	95.6	63.8
65 + years	99.7	99.6	98.5	90.2
Working with patients	99.6	99.6	98.9	77.9
Vaccinated overall	98.1	97.5	88.9	68.8

Contact the FluTracking Team: flutracking.nz@esr.cri.nz To join the survey or find out more information:
info.flutracking.net