

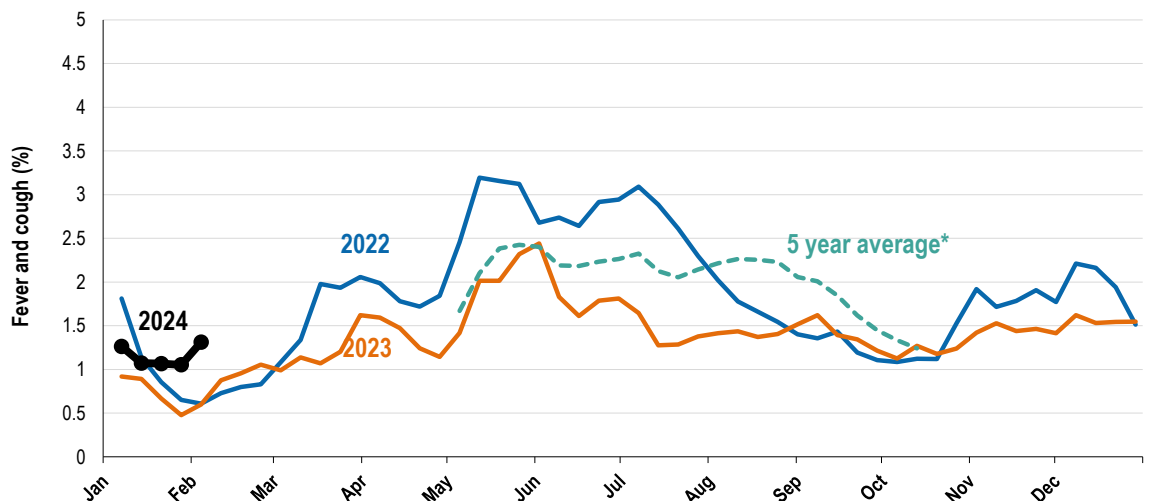
## Respiratory illness levels have increased this week

44,560 participants this week

**Figure 1- Respiratory illness activity\***

\*Respiratory illness activity is defined as fever & cough for this report

**1.3% this week and 1.1% last week**

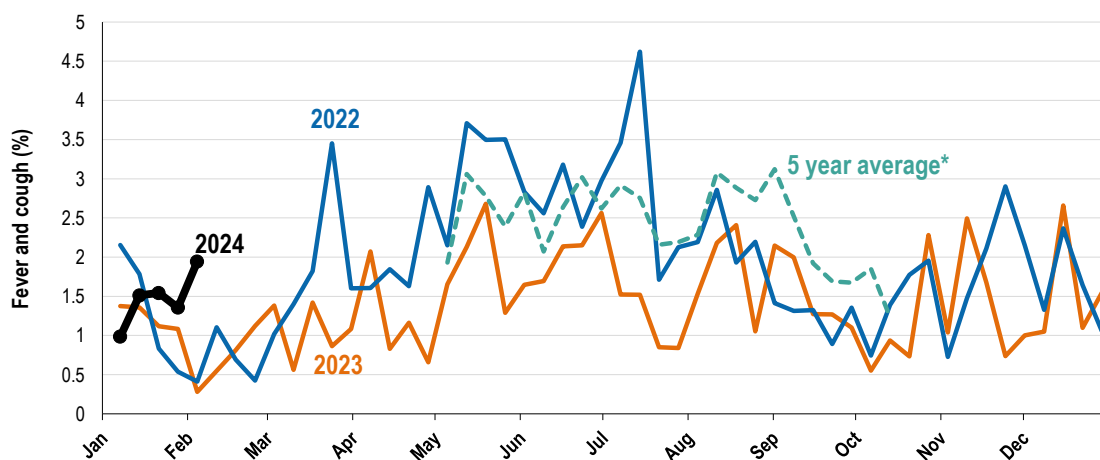


^ Data are age standardised in this graph

\*5 year average is calculated using 2017, 2018, 2019, 2022 and 2023 data

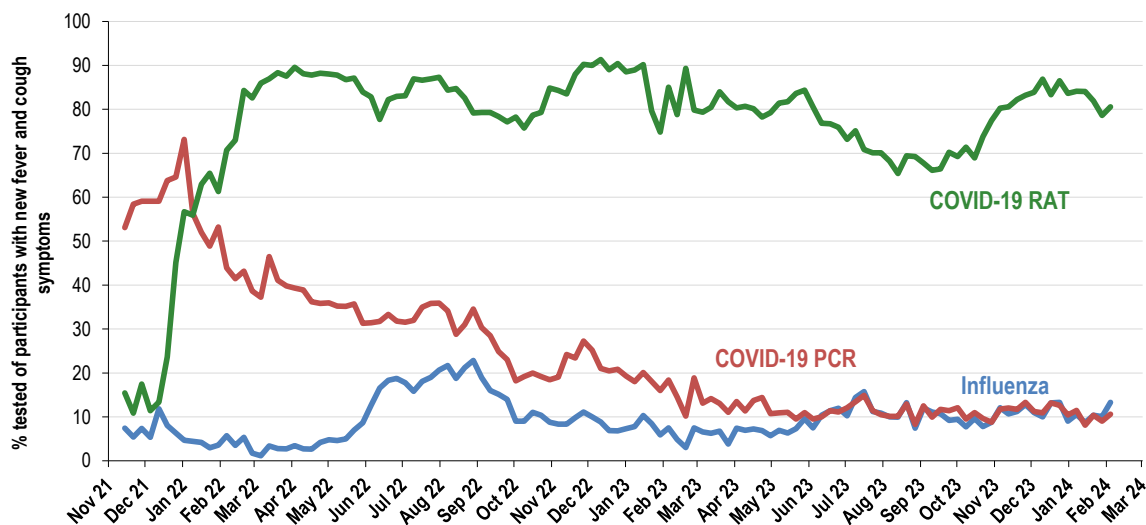
**Figure 2- Respiratory illness activity among Aboriginal and Torres Strait Islander participants**

**1.9% this week and 1.4% last week**



\*Average Number of Aboriginal and Torres Strait Islander Participants=574

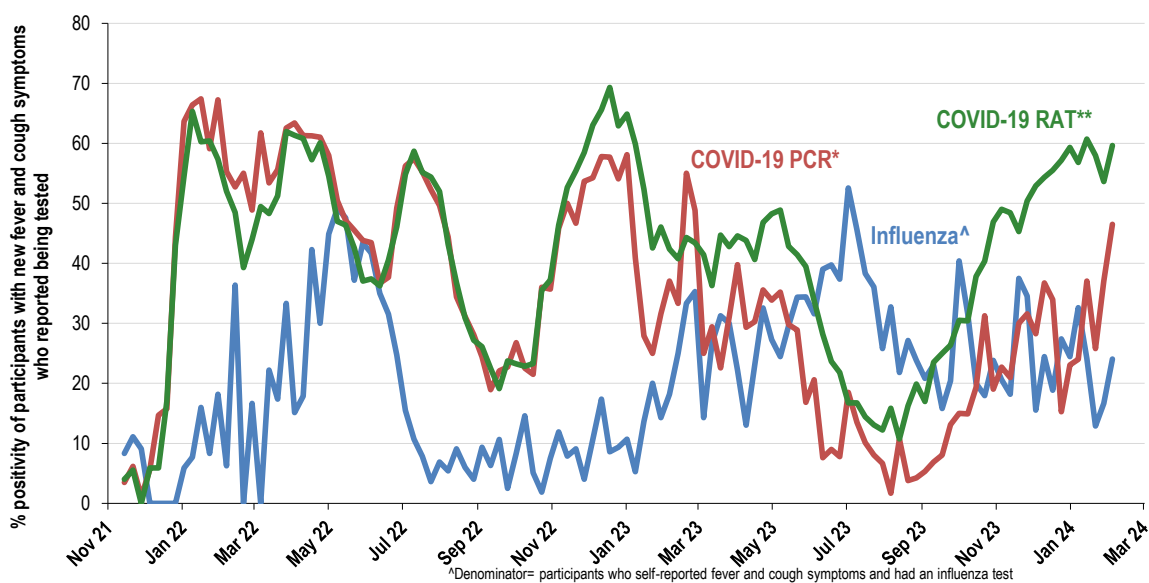
\*5 year average is calculated using 2017, 2018, 2019, 2022 and 2023 data

**Figure 3- Fever, cough and reported testing for COVID-19 or influenza**


Flu testing: 13.3% (54/406) this week compared to 10% last week

COVID-19 RAT testing: 80.5% (327/406) this week compared to 78.6% last week

COVID-19 PCR testing: 10.6% (43/406) this week compared to 9% last week

**Figure 4- Fever, cough and reported a positive test result for COVID-19 or influenza**

<sup>a</sup>Denominator= participants who self-reported fever and cough symptoms and had an influenza test

<sup>\*</sup>Denominator= participants who self-reported fever and cough symptoms and had a COVID-19 PCR test

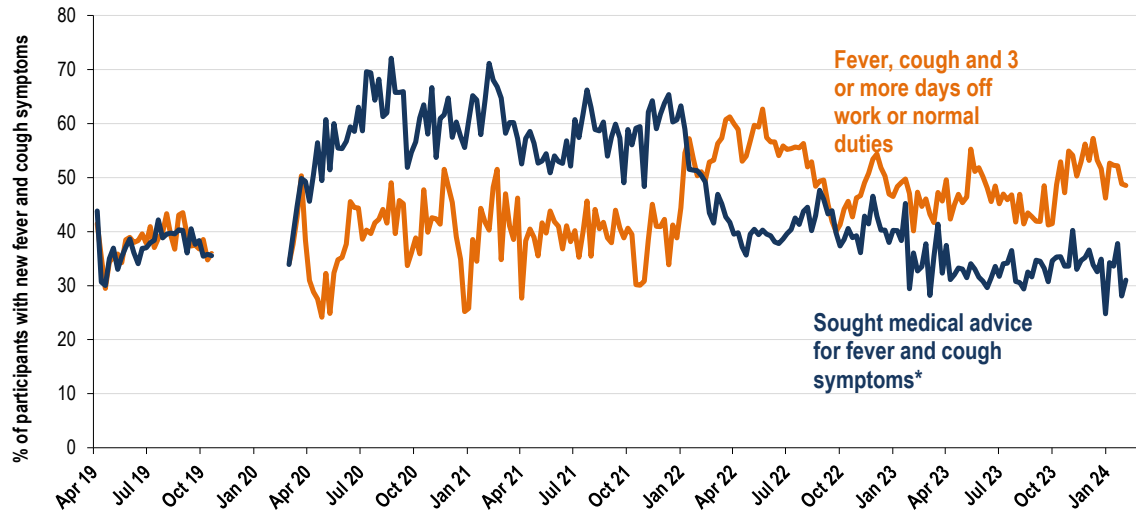
<sup>\*\*</sup>Denominator= participants who self-reported fever and cough symptoms and has a COVID-19 RAT test

Flu % positivity: 24.1% (13/54) this week compared to 16.7% last week

COVID-19 RAT % positivity: 59.6% (195/327) this week compared to 53.6% last week

COVID-19 PCR % positivity: 46.5% (20/43) this week compared to 37% last week

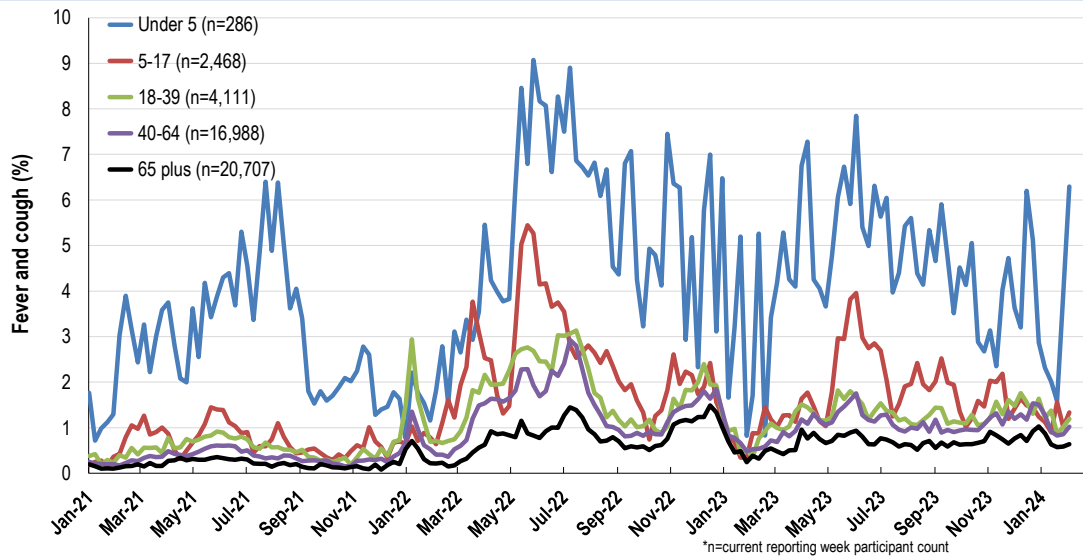
**Figure 5- Severity of Respiratory Illness Activity**



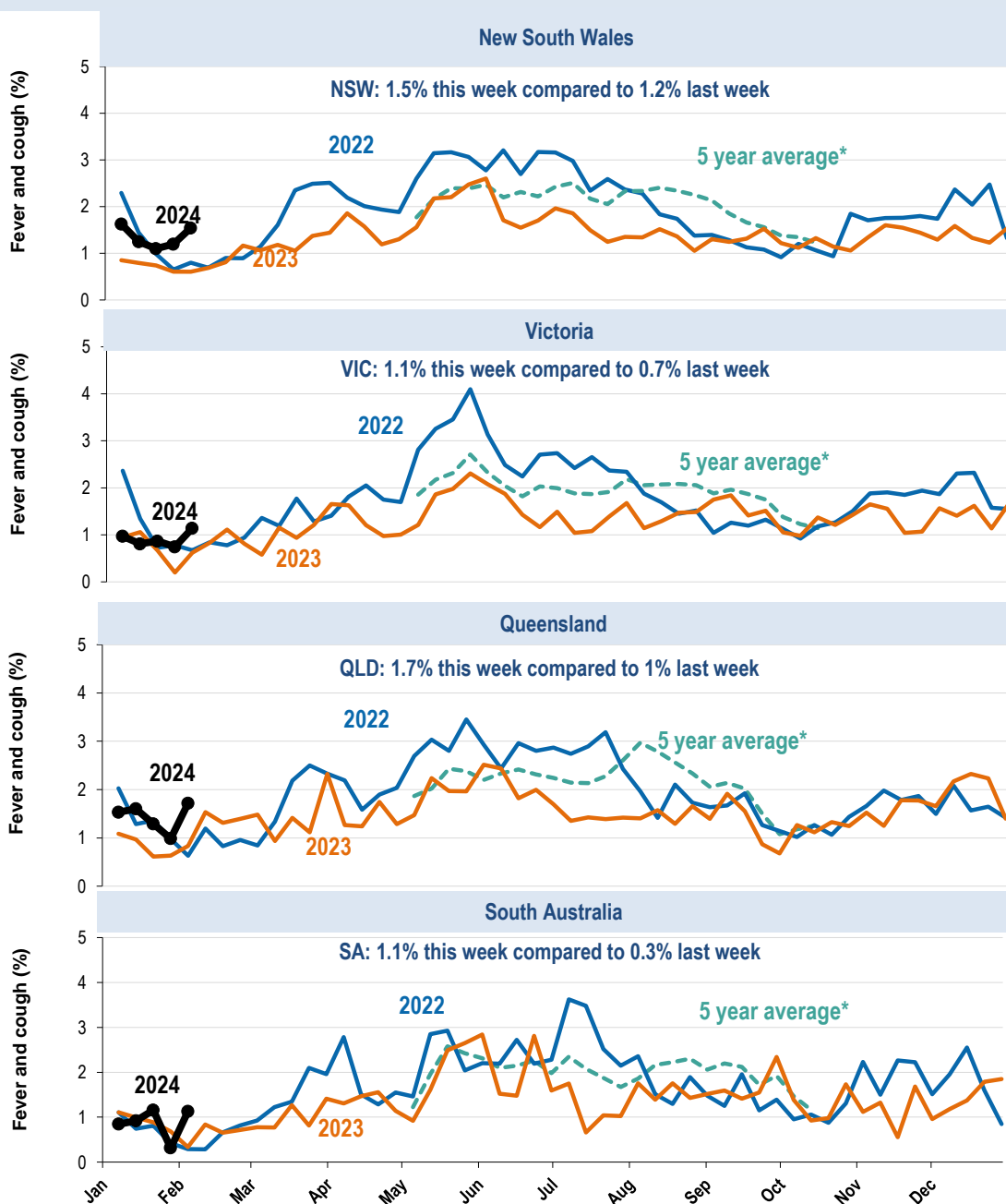
\* Includes those who sought medical advice from a general practitioner, Aboriginal and Torres Strait Islander Health Clinic, COVID-19 clinic, emergency department, or were admitted to hospital for fever & cough.

FC and 3+ days off: 48.5% (197/406) this week compared to 48.8% last week  
 Sought medical advice for FC: 31% (126/406) this week compared to 28.1% last week

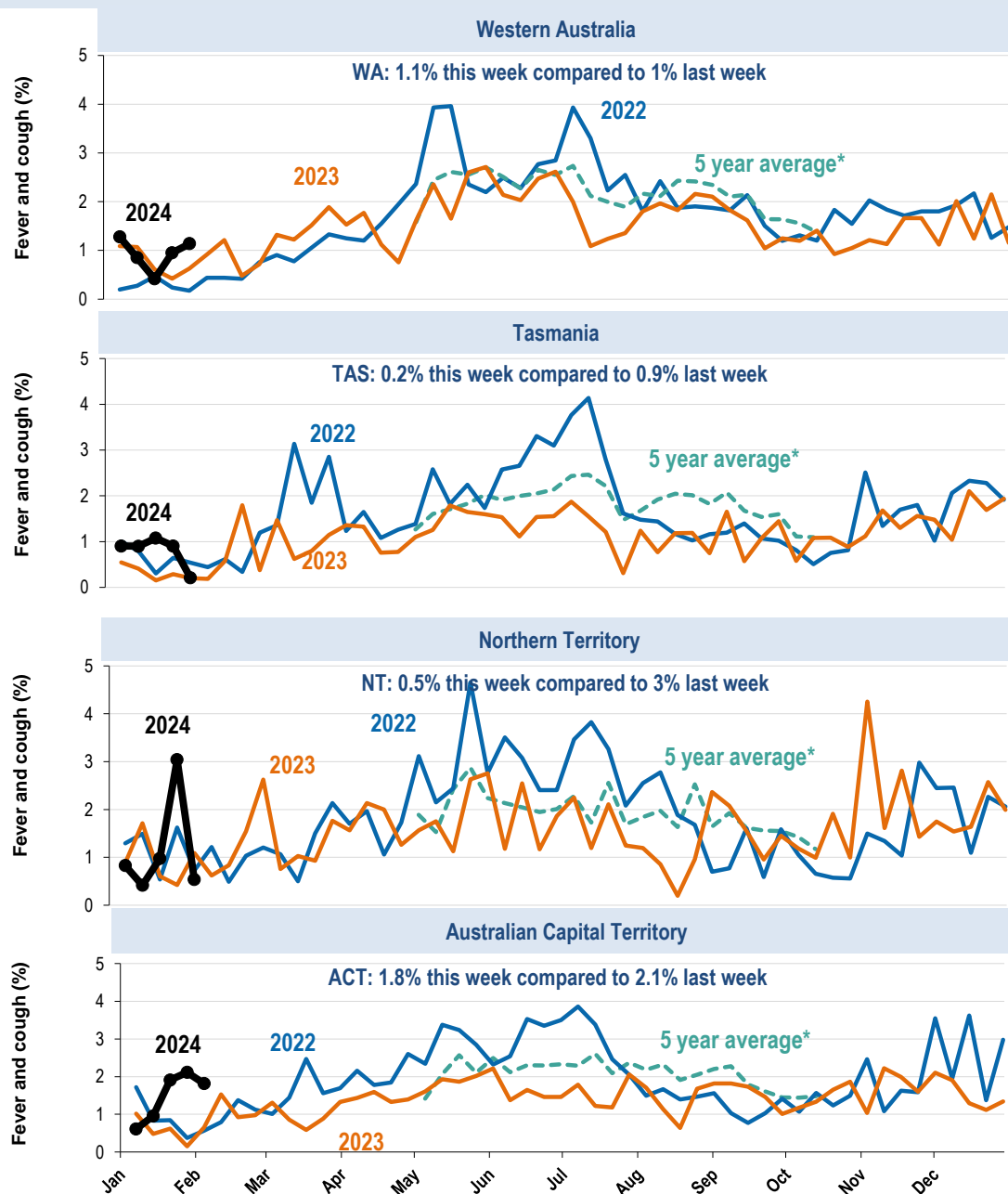
**Figure 6- Respiratory illness activity by age group**



\*n=current reporting week participant count

**Figure 7- Respiratory illness activity by state/territory (age standardised)**


\*5 year average is calculated using 2016, 2017, 2018, 2019 and 2022 data

**Figure 7- Respiratory illness activity by state/territory (age standardised)**


\*5 year average is calculated using 2016, 2017, 2018, 2019 and 2022 data

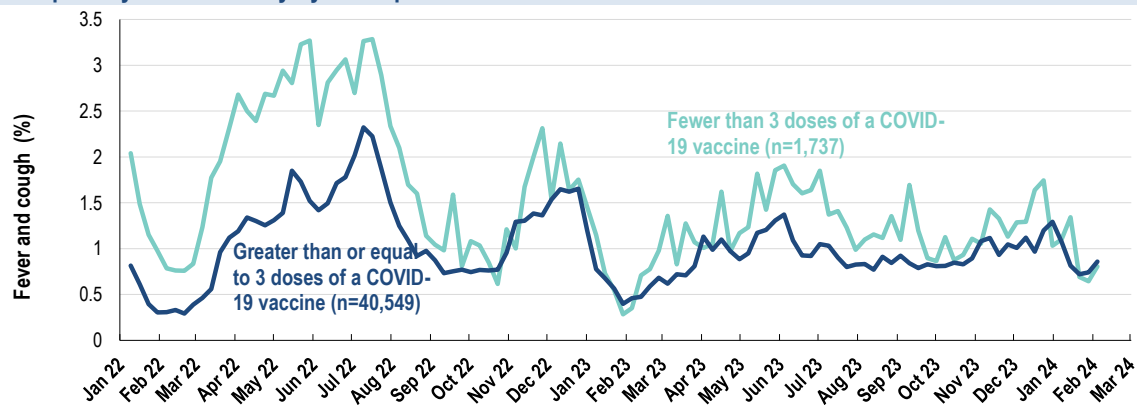
**Table 1- Participation**

44,560 participants (36,125 last week)

State	Participants	% Rate/100,000 population
NSW	15931	35.8% <b>191.0</b>
VIC	8803	19.8% <b>129.2</b>
QLD	5520	12.4% <b>101.1</b>
SA	3926	8.8% <b>212.0</b>
WA	4212	9.5% <b>146.3</b>
TAS	2788	6.3% <b>486.7</b>
NT	720	1.6% <b>285.1</b>
ACT	2660	6.0% <b>569.8</b>
AUS	44560	100.0% <b>167.3</b>

**Table 2- Vaccination rates**

Vaccinated participants:	COVID-19 vaccine					
	At least 1 dose (%)	At least 2 doses (%)	At least 3 doses (%)	At least 4 doses (%)	At least 5 doses (%)	6 doses (%)
<5 years	2.8	1.4	0.0	0.0	0.0	0.0
5-11 years	79.8	74.4	3.0	0.0	0.0	0.0
12-17 years	97.0	95.1	12.2	0.7	0.0	0.0
18-64 years	97.6	99.2	95.0	70.1	45.7	11.6
65+ years	99.5	99.5	98.5	94.5	84.9	48.0
Working with patients	99.6	99.5	97.9	77.9	53.8	19.0
Aboriginal and/or Torres Strait Islander	95.4	94.2	76.7	55.6	35.9	15.3
<b>Vaccinated overall (%)</b>	<b>98.2</b>	<b>98.0</b>	<b>91.2</b>	<b>77.1</b>	<b>61.1</b>	<b>27.8</b>

**Figure 8- Respiratory illness activity by self-reported COVID-19 vaccination status**


^ Data are for participants aged 16 years or older in this chart

\*n=current reporting week participant count

\*\* 2 week lag is factored into calculations to account for immunity developing following vaccination

3 or more doses of a COVID vaccine: 0.9% this week compared to 0.7% last week

Fewer than 3 doses of a COVID vaccine: 0.8% this week compared to 0.6% last week