

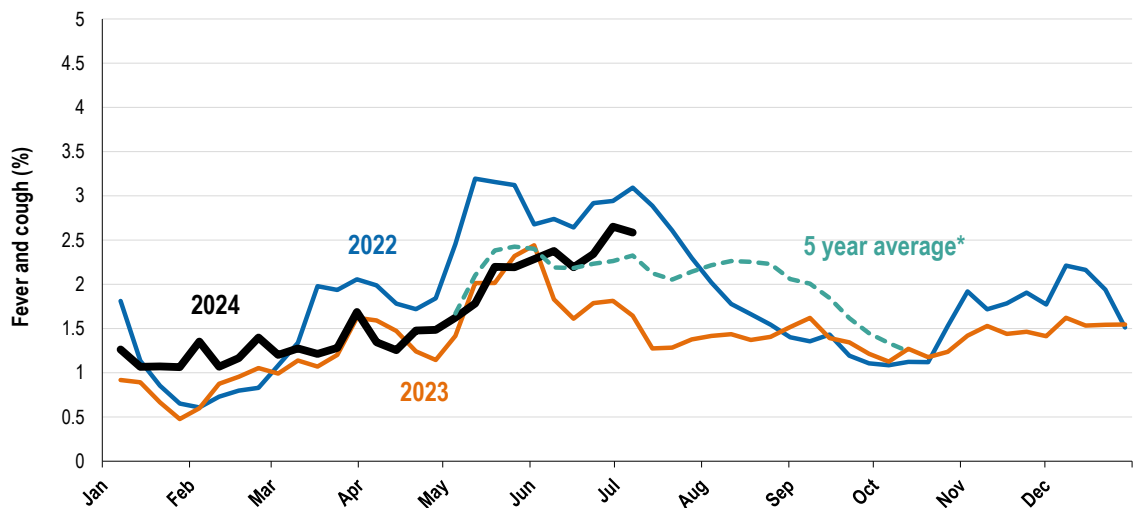
## Respiratory illness levels have decreased this week

51,464 participants this week

**Figure 1- Respiratory illness activity\***

\*Respiratory illness activity is defined as fever & cough for this report

**2.6% this week and 2.7% last week**

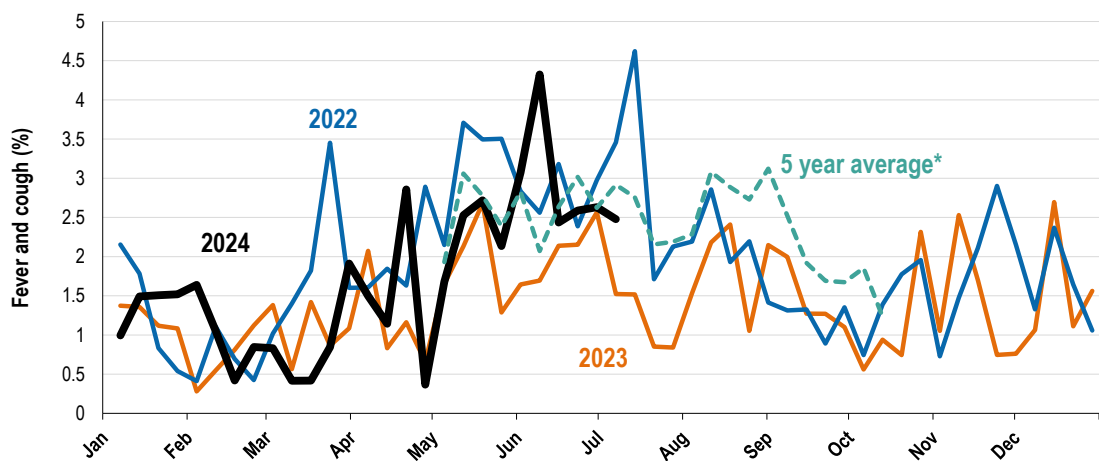


^ Data are age standardised in this graph

\*5 year average is calculated using 2017, 2018, 2019, 2022 and 2023 data

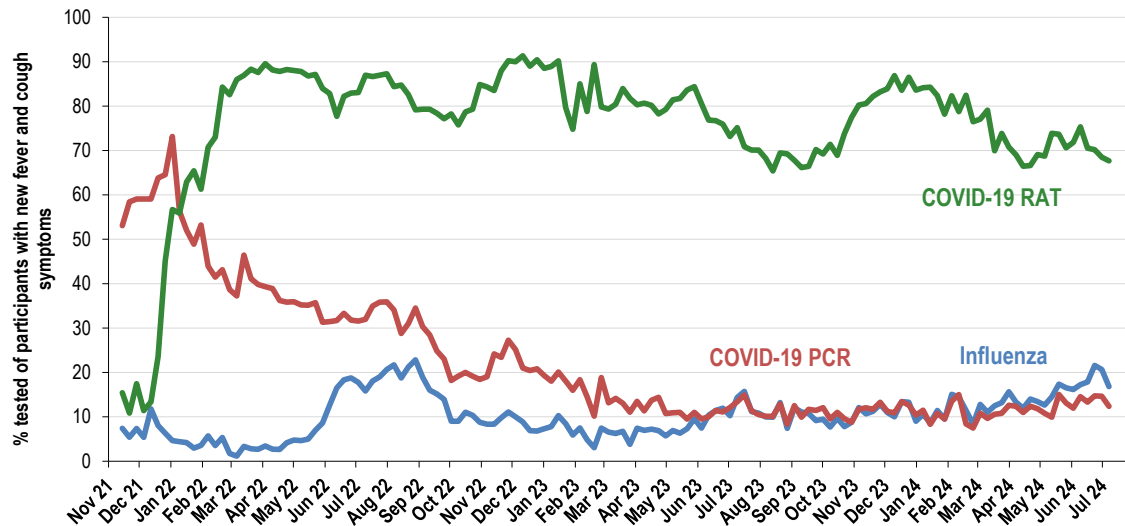
**Figure 2- Respiratory illness activity among Aboriginal and Torres Strait Islander participants**

**2.5% this week and 2.6% last week**



\*Average Number of Aboriginal and Torres Strait Islander Participants=561

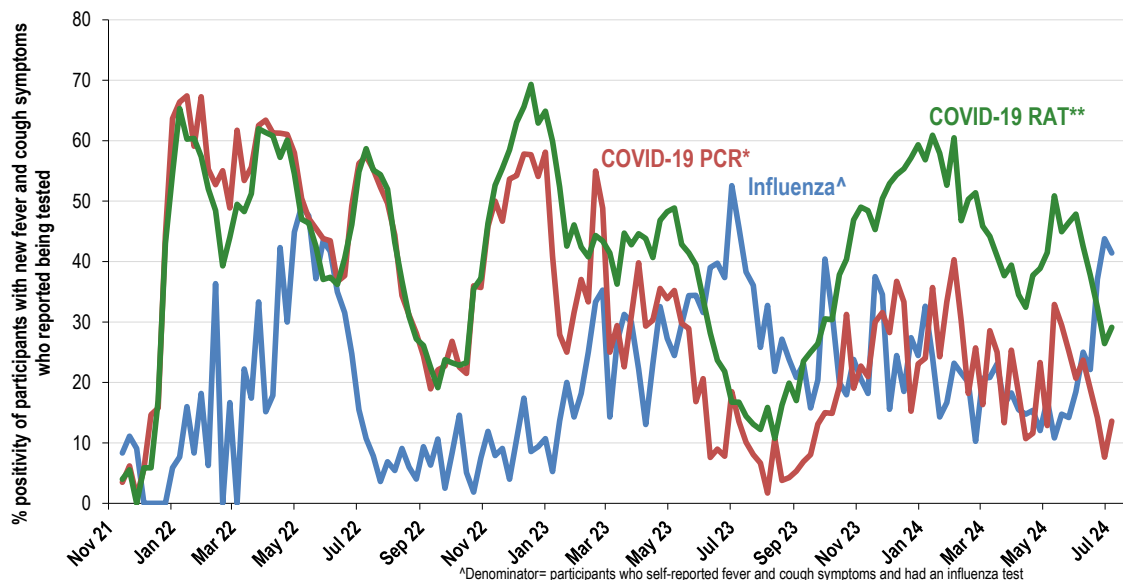
\*5 year average is calculated using 2017, 2018, 2019, 2022 and 2023 data

**Figure 3- Fever, cough and reported testing for COVID-19 or influenza**


Flu testing: 16.8% (140/832) this week compared to 20.7% last week

COVID-19 RAT testing: 67.7% (563/832) this week compared to 68.5% last week

COVID-19 PCR testing: 12.4% (103/832) this week compared to 14.6% last week

**Figure 4- Fever, cough and reported a positive test result for COVID-19 or influenza**

<sup>^</sup>Denominator= participants who self-reported fever and cough symptoms and had an influenza test

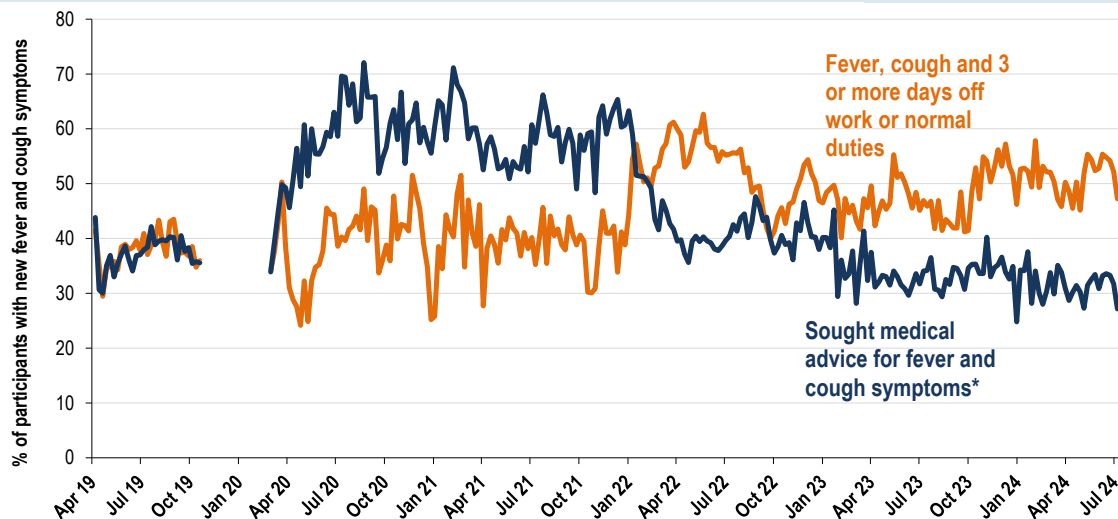
<sup>\*</sup>Denominator= participants who self-reported fever and cough symptoms and had a COVID-19 PCR test

<sup>\*\*</sup>Denominator= participants who self-reported fever and cough symptoms and has a COVID-19 RAT test

Flu % positivity: 41.4% (58/140) this week compared to 43.8% last week

COVID-19 RAT % positivity: 29.1% (164/563) this week compared to 26.4% last week

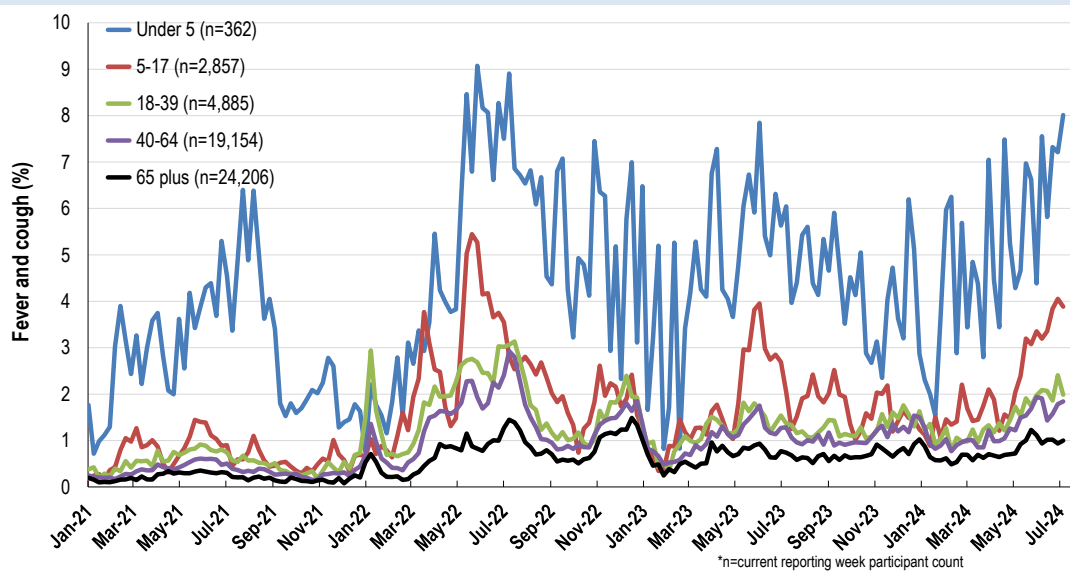
COVID-19 PCR % positivity: 13.6% (14/103) this week compared to 7.6% last week

**Figure 5- Severity of Respiratory Illness Activity**


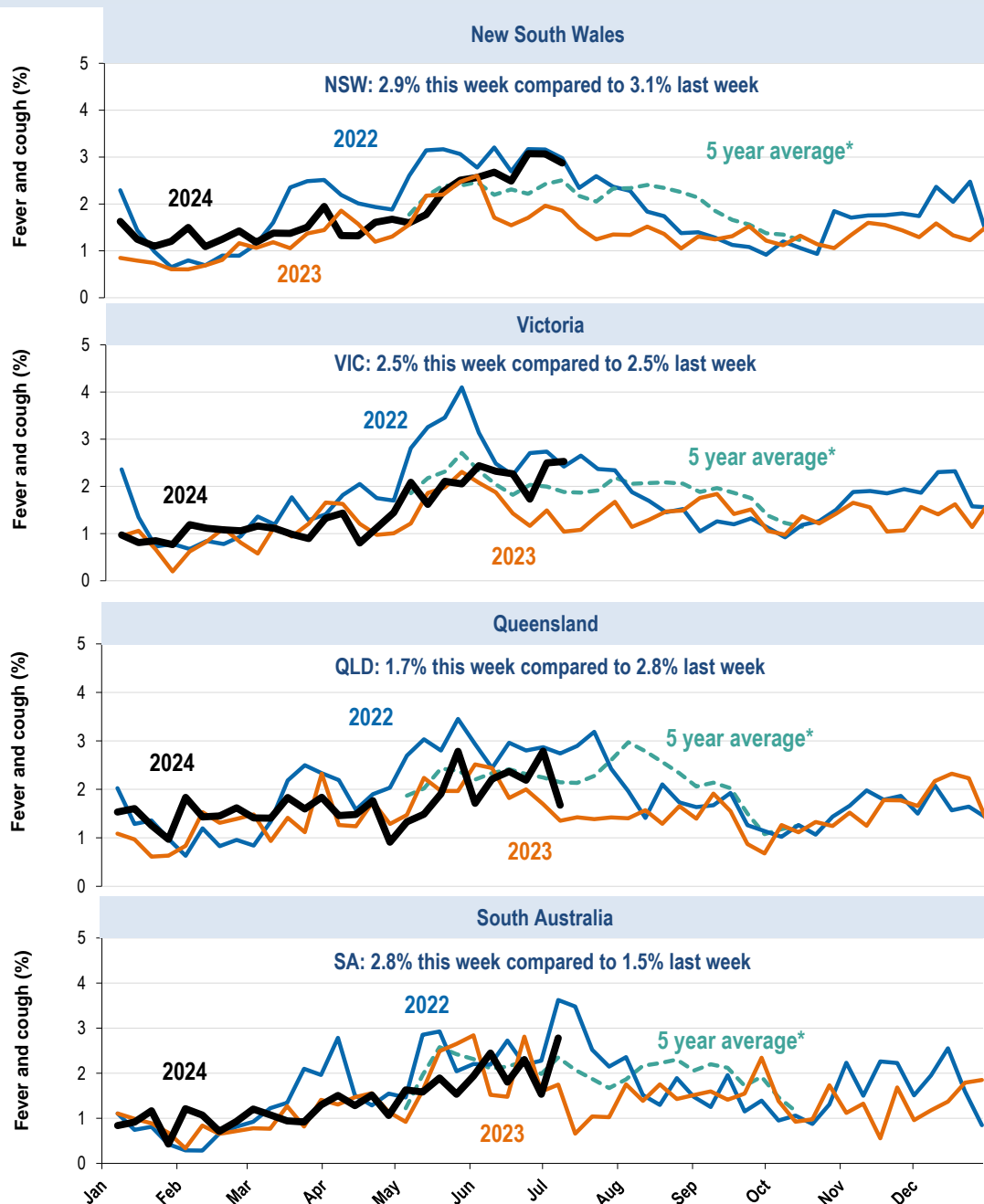
\* Includes those who sought medical advice from a general practitioner, Aboriginal and Torres Strait Islander Health Clinic, COVID-19 clinic, emergency department, or were admitted to hospital for fever & cough.

FC and 3+ days off: 47.2% (393/832) this week compared to 52.2% last week

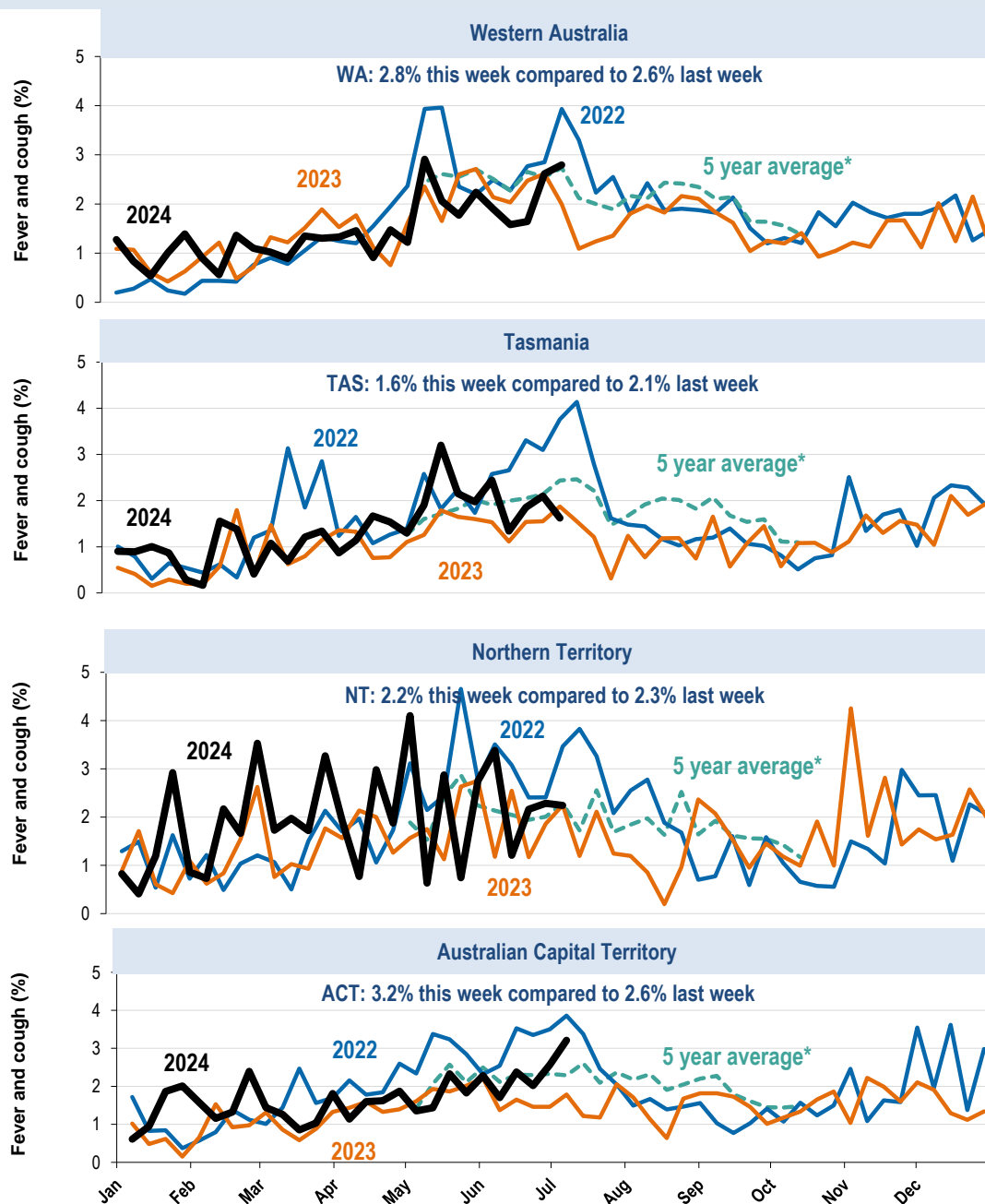
Sought medical advice for FC: 27.2% (226/832) this week compared to 31.7% last week

**Figure 6- Respiratory illness activity by age group**


\*n=current reporting week participant count

**Figure 7- Respiratory illness activity by state/territory (age standardised)**


\*5 year average is calculated using 2016, 2017, 2018, 2019 and 2022 data

**Figure 7- Respiratory illness activity by state/territory (age standardised)**


\*5 year average is calculated using 2016, 2017, 2018, 2019 and 2022 data

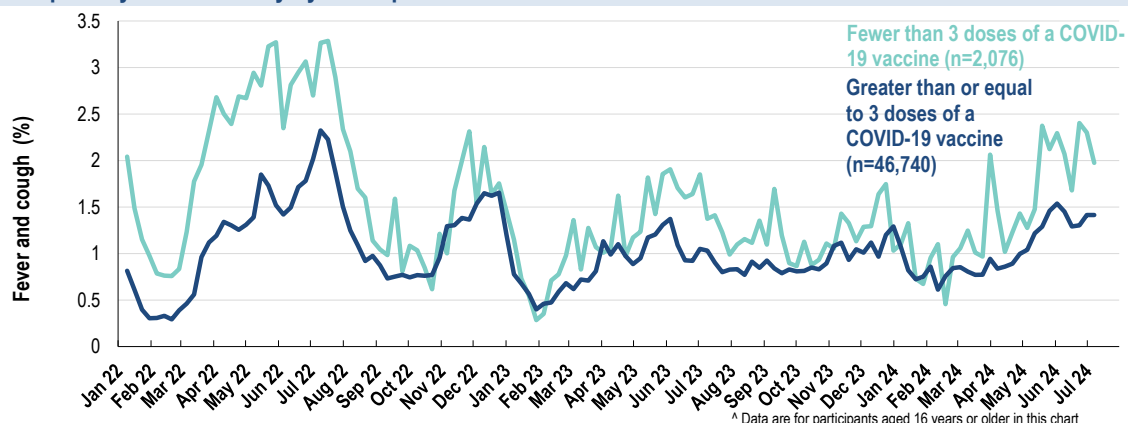
**Table 1- Participation**

51,464 participants (51,352 last week)

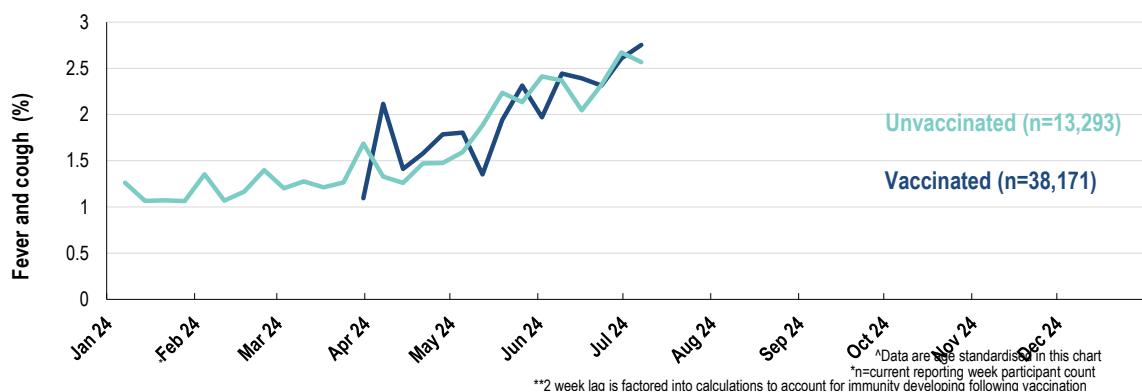
State	Participants	% Rate/100,000 population
NSW	18551	36.0% <b>219.9</b>
VIC	10088	19.6% <b>146.1</b>
QLD	6346	12.3% <b>340.0</b>
SA	4414	8.6% <b>238.4</b>
WA	4989	9.7% <b>170.4</b>
TAS	3208	6.2% <b>558.2</b>
NT	723	1.4% <b>285.1</b>
ACT	3145	6.1% <b>668.9</b>
AUS	51464	100.0% <b>190.8</b>

**Table 2- Vaccination rates**

Vaccinated participants:	COVID-19 vaccine						Influenza (%)
	At least 1 dose (%)	At least 2 doses (%)	At least 3 doses (%)	At least 4 doses (%)	At least 5 doses (%)	6 doses (%)	
<5 years	2.8	1.7	0.0	0.0	0.0	0.0	67.7
5-11 years	74.2	68.9	3.2	0.0	0.0	0.0	49.4
12-17 years	96.1	93.8	9.7	0.9	0.0	0.0	36.7
18-64 years	97.6	99.3	94.9	70.5	48.8	24.4	68.4
65+ years	99.6	99.5	98.5	94.6	86.8	69.5	87.9
Working with patients	99.6	99.5	97.9	78.1	57.2	32.9	82.0
Aboriginal and/or Torres Strait Islander	96.2	94.4	79.3	56.3	38.3	25.5	63.3
<b>Vaccinated overall (%)</b>	<b>98.0</b>	<b>97.8</b>	<b>91.0</b>	<b>77.5</b>	<b>63.6</b>	<b>44.1</b>	<b>76.1</b>

**Figure 8- Respiratory illness activity by self-reported COVID-19 vaccination status**


3 or more doses of a COVID vaccine: 1.4% this week compared to 1.4% last week  
Fewer than 3 doses of a COVID vaccine: 2% this week compared to 2.3% last week

**Figure 9- Respiratory illness activity by self-reported influenza vaccination status**


Unvaccinated for influenza: 2.6% this week compared to 2.7% last week  
Vaccinated for influenza: 2.8% this week compared to 2.6% last week