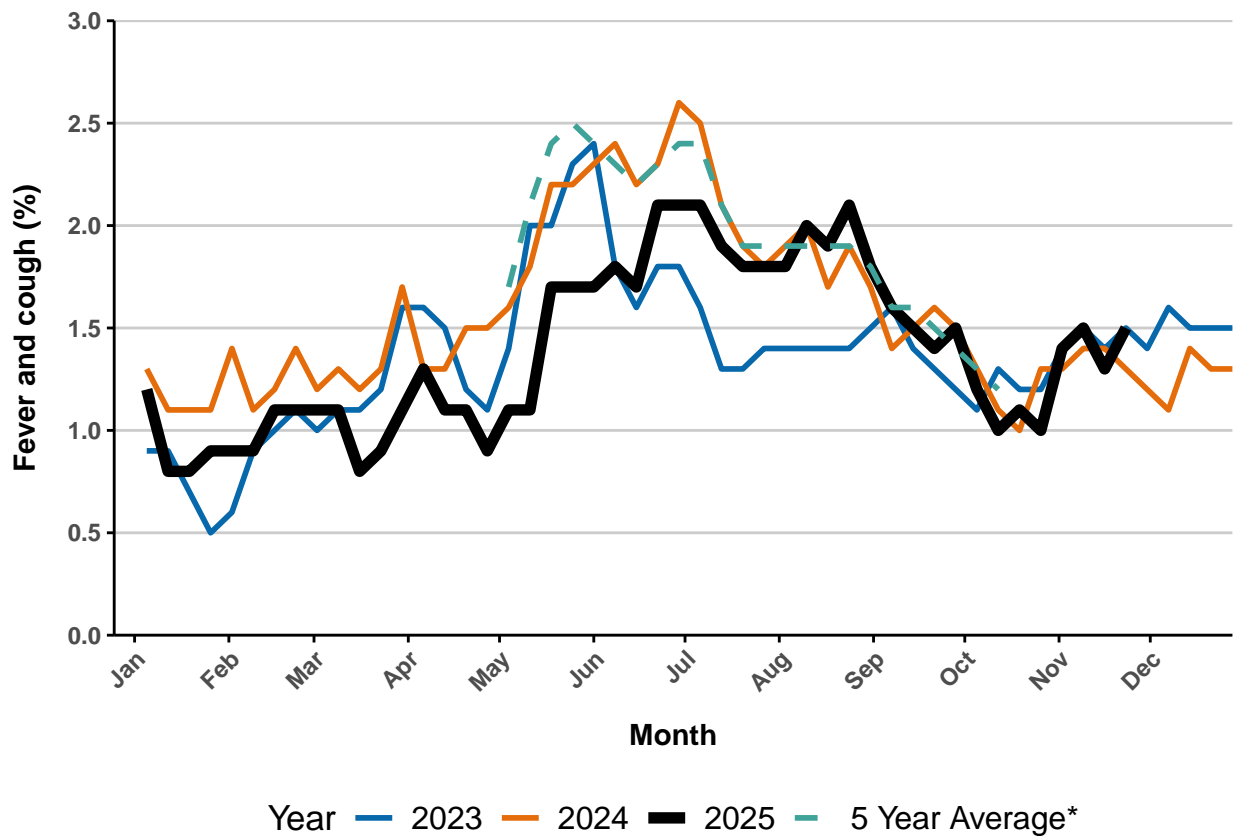


**FluTracking Australia Weekly Report**
**Reporting week Monday 17 November 2025 - Sunday 23 November 2025**
**(Data used in this report received up to 09:00 AM, Thursday 27 November 2025)**
**Respiratory illness levels have increased this week**
**30256 participants this week**
**Figure 1 - Respiratory illness activity\* (age standardised)**

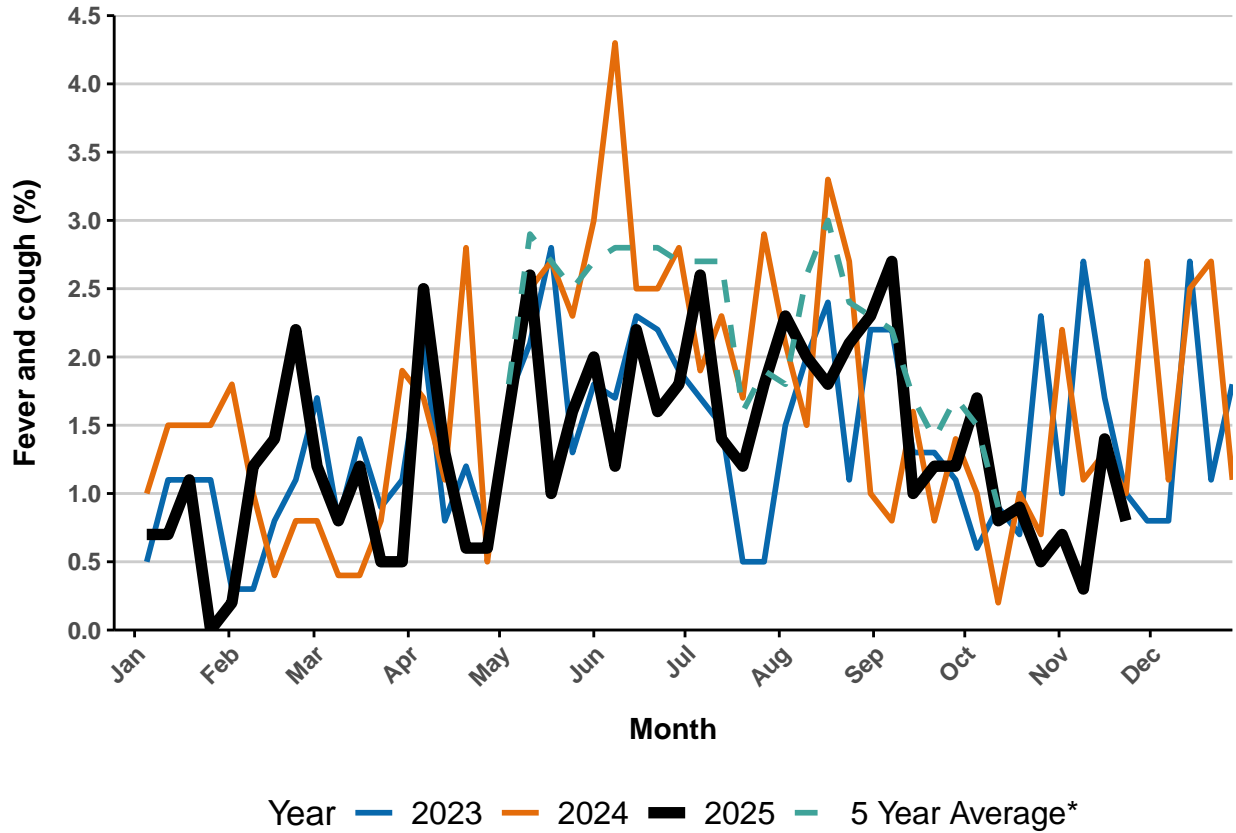
\* Respiratory illness activity is defined as fever &amp; cough for this report.

**1.5% this week and 1.3% last week**


\* 5 year average is calculated using 2018, 2019, 2022, 2023, 2024 data.

**Figure 2 - Respiratory illness activity among Aboriginal and Torres Strait Islander participants**

0.8% this week and 1.4% last week

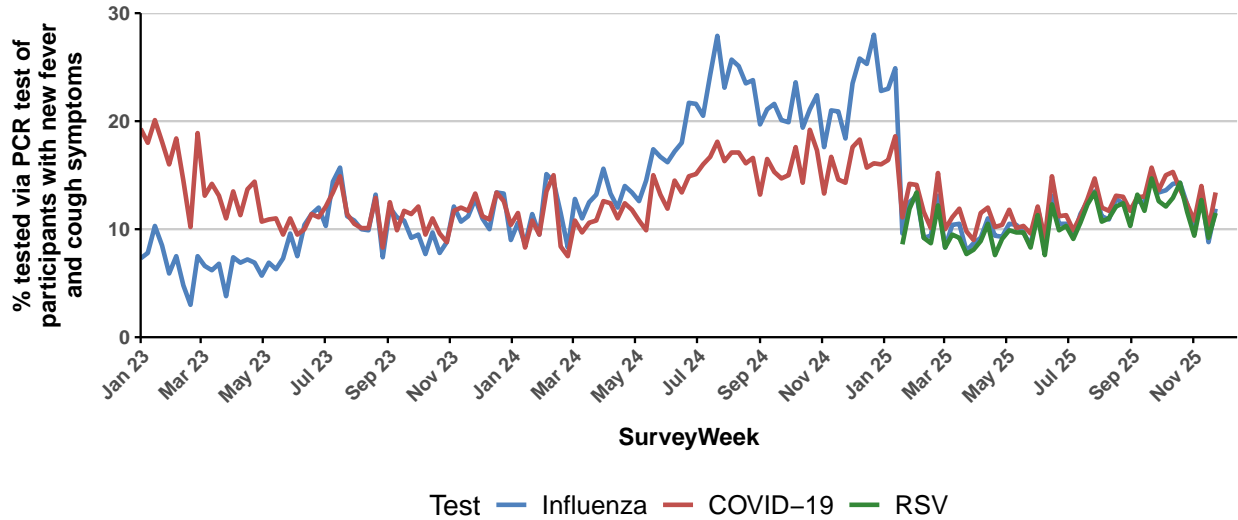


- Total number of Aboriginal and Torres Strait Islander participants this week = 246.

- Average number of Aboriginal and Torres Strait Islander participants in 2025 = 440.

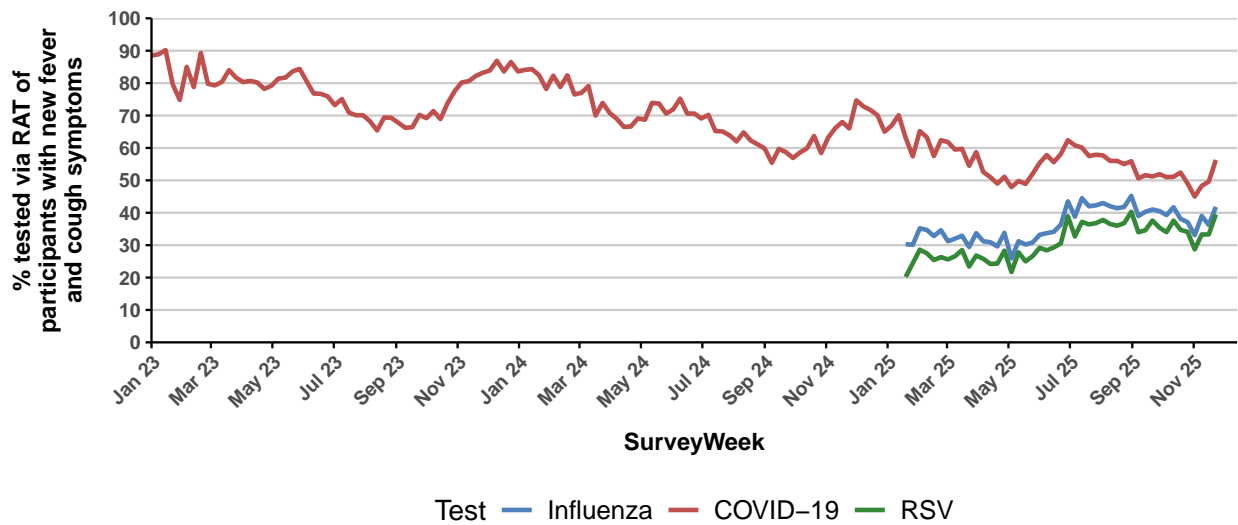
\* 5 year average is calculated using 2018, 2019, 2022, 2023, 2024 data.

**Figure 3a - Polymerase Chain Reaction (PCR) testing among participants reporting fever and cough symptoms**



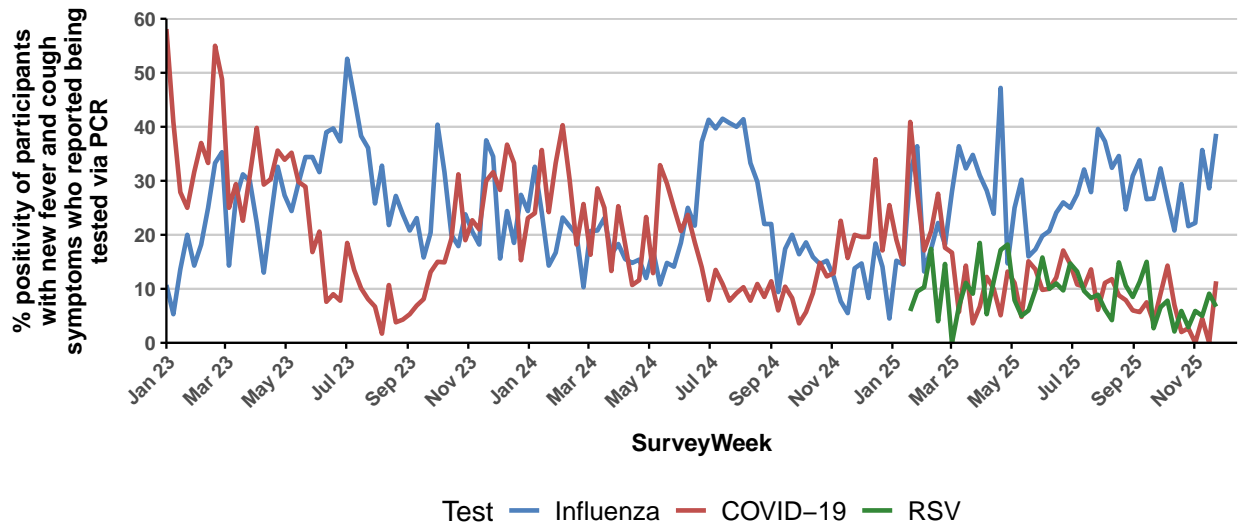
- Influenza PCR: **11.9% (31/261)** this week compared to **8.8%** last week.
- COVID-19 PCR: **13.4% (35/261)** this week compared to **10%** last week.
- RSV PCR: **11.5% (30/261)** this week compared to **9.2%** last week.

**Figure 3b - Rapid Antigen Testing (RAT) among participants reporting fever and cough symptoms**



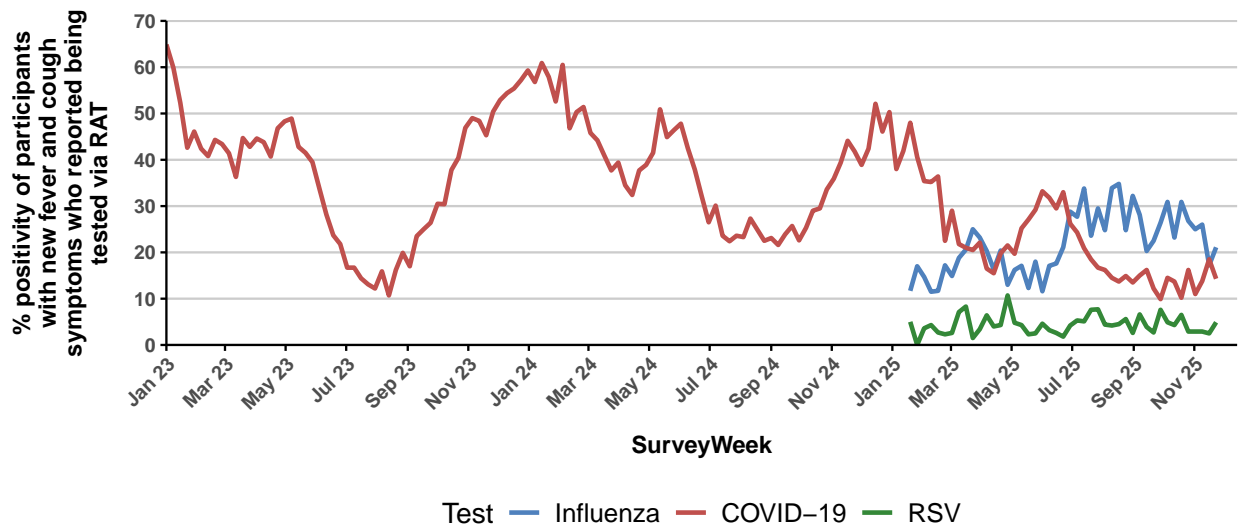
- Influenza RAT: **41.8% (109/261)** this week compared to **36.2%** last week.
- COVID-19 RAT: **56.3% (147/261)** this week compared to **49.6%** last week.
- RSV RAT: **39.5% (103/261)** this week compared to **33.3%** last week.

**Figure 4a - PCR test percent positivity among participants reporting fever and cough symptoms**



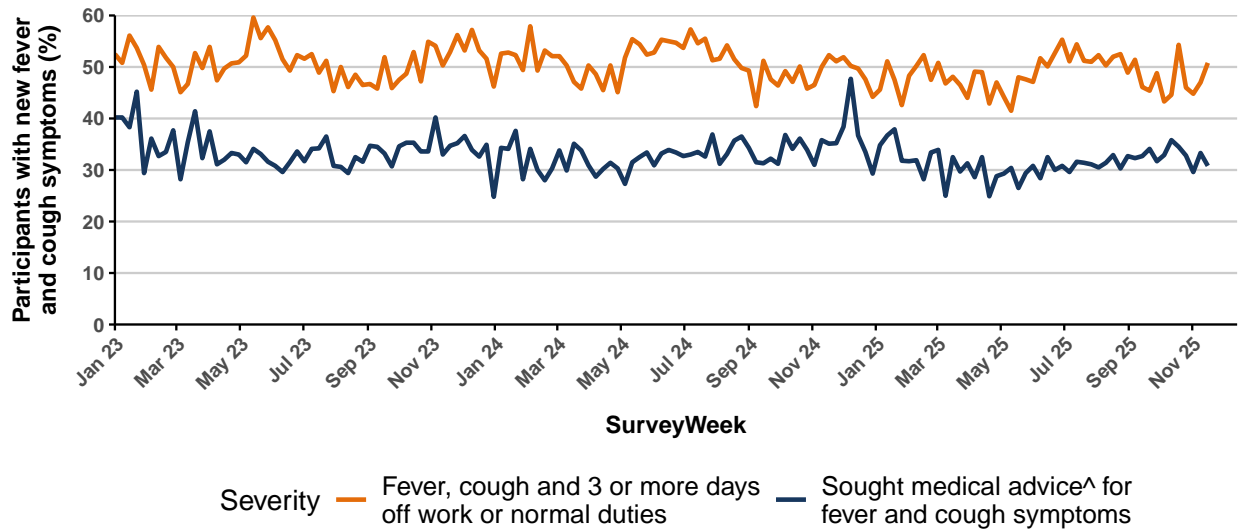
- Influenza PCR: **38.7% (12/31)** this week compared to **28.6%** last week.  
(Denominator is participants who self-reported fever and cough symptoms and tested via influenza PCR).
- COVID-19 PCR: **11.4% (4/35)** this week compared to **0%** last week.  
(Denominator is participants who self-reported fever and cough symptoms and tested via COVID-19 PCR).
- RSV PCR: **6.7% (2/30)** this week compared to **9.1%** last week.  
(Denominator is participants who self-reported fever and cough symptoms and tested via RSV PCR).

**Figure 4b - RAT percent positivity among participants reporting fever and cough symptoms**



- Influenza RAT: **21.1% (23/109)** this week compared to **17.2%** last week.  
(Denominator is participants who self-reported fever and cough symptoms and tested via influenza RAT).
- COVID-19 RAT: **14.3% (21/147)** this week compared to **18.5%** last week.  
(Denominator is participants who self-reported fever and cough symptoms and tested via COVID-19 RAT).
- RSV RAT: **4.9% (5/103)** this week compared to **2.5%** last week.  
(Denominator is participants who self-reported fever and cough symptoms and tested via RSV RAT).

**Figure 5 - Severity of respiratory illness activity**



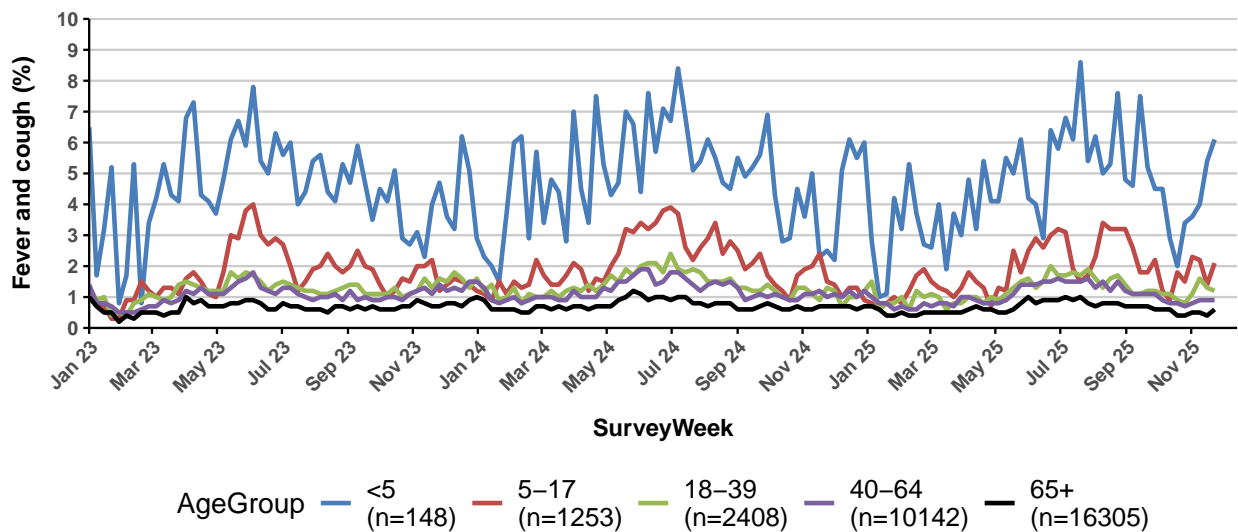
- Fever and cough with an absence of  $\geq 3$  days: **50.8% (122/240)** this report\* compared to **47%** last report.

- Sought medical advice^ for fever and cough symptoms: **30.8% (74/240)** this report\* compared to **33.3%** last report.

\* Data in this figure is from participants reporting incident fever and cough symptoms commencing last week who were absent  $\geq 3$  days or sought medical advice last week OR this week due to their ongoing symptoms. Please visit <https://info.flutracking.net/insights/> for more information.

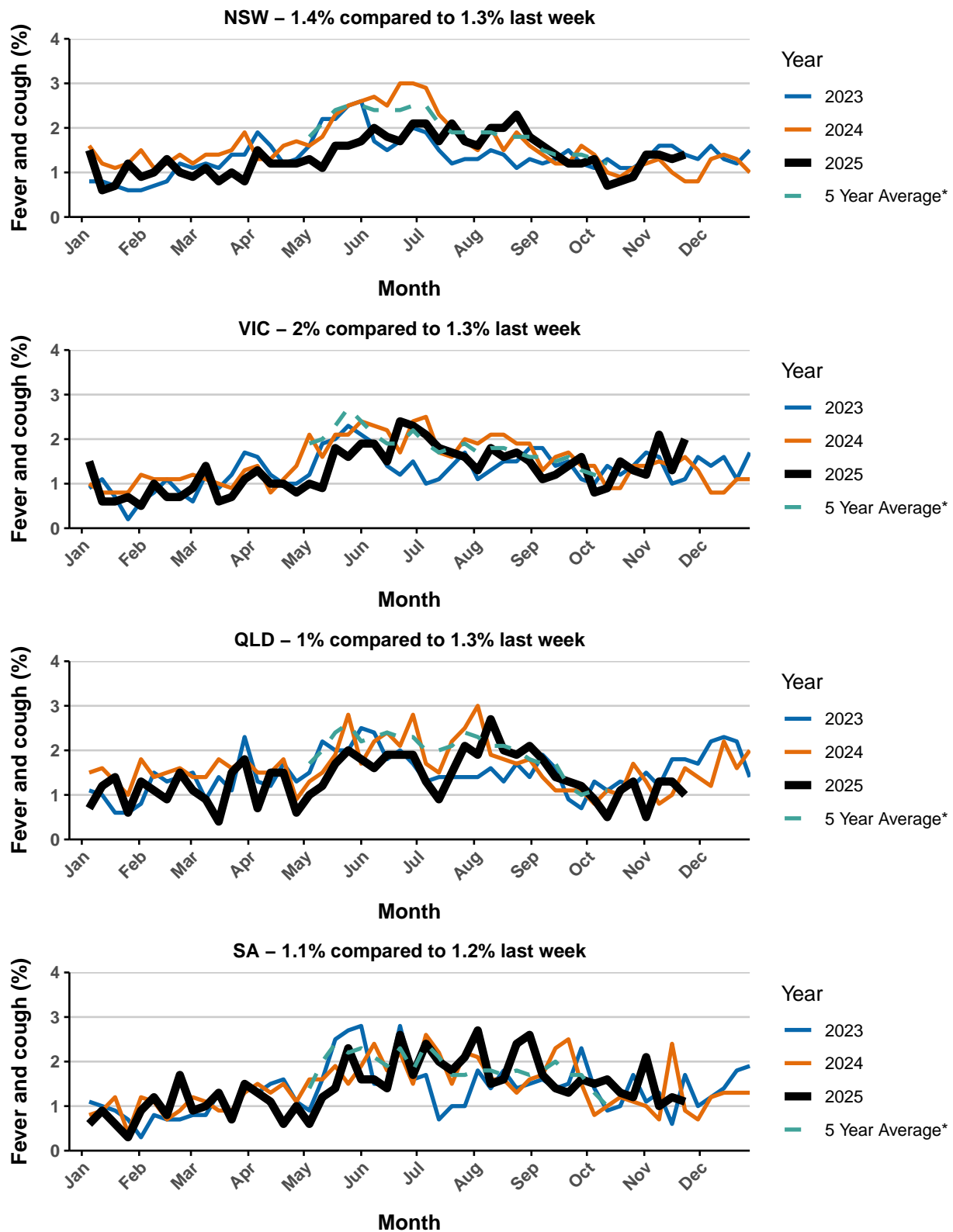
^ Includes those who sought medical advice from a general practitioner, Aboriginal and Torres Strait Islander health clinic, COVID-19 clinic, emergency department, or were admitted to hospital for fever and cough.

**Figure 6 - Respiratory illness activity by age group**

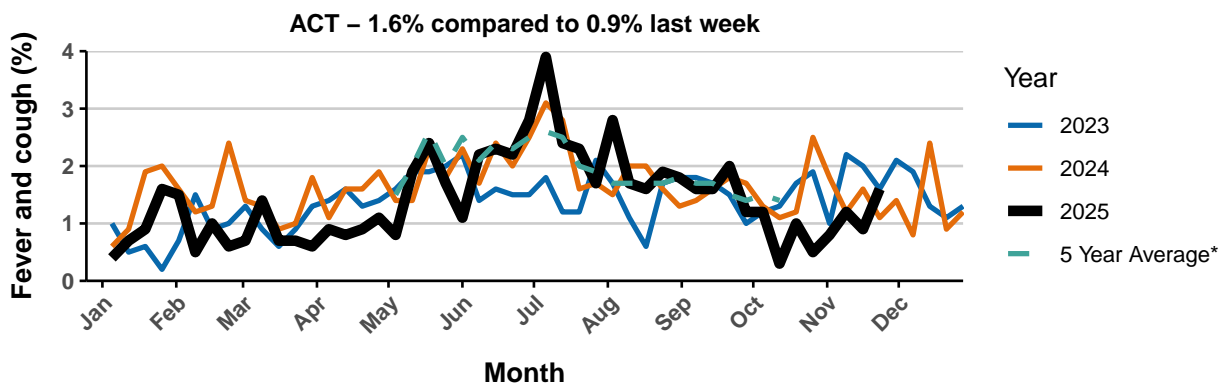
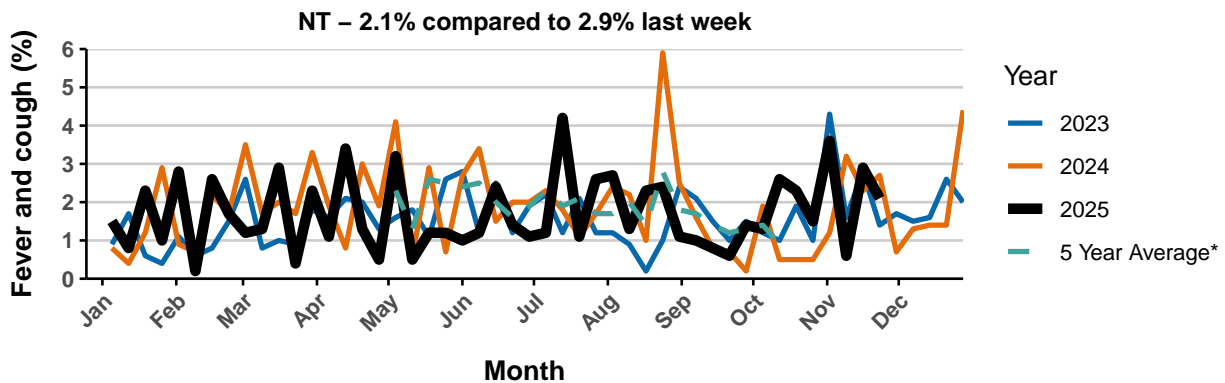
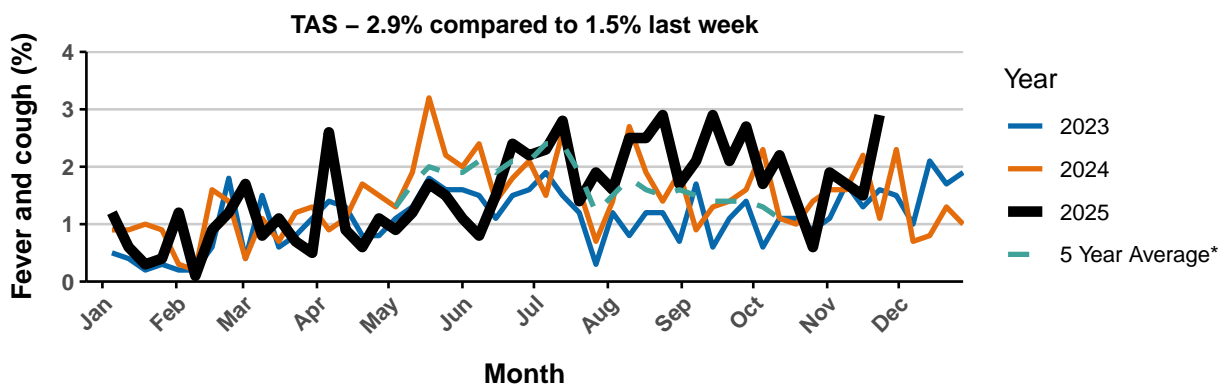
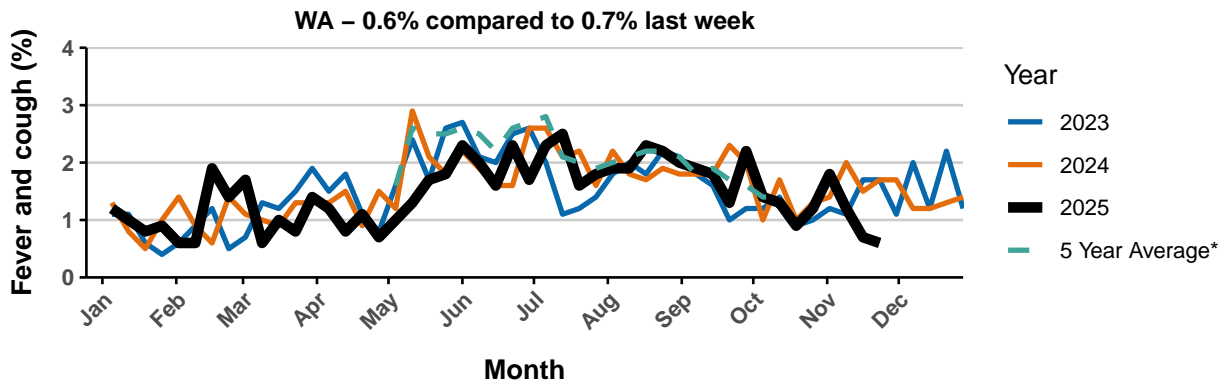


\* n = current reporting week participant count. Use caution when interpreting chart where n is low (e.g. less than 1000).

**Figure 7 - Respiratory illness activity by state/territory (age standardised)**



\* 5 year average is calculated using 2018, 2019, 2022, 2023, 2024 data.



\* 5 year average is calculated using 2018, 2019, 2022, 2023, 2024 data.

**Table 1 - Participation**
**30256** participants (**32779** last week)

Jurisdiction	Participants	Percent (%)	Participation Rate/ 100,000 Population
<b>NSW</b>	10,852	35.9	126.5
<b>VIC</b>	6,110	20.2	86.6
<b>QLD</b>	3,524	11.6	62.4
<b>SA</b>	2,677	8.8	141.0
<b>WA</b>	2,764	9.1	91.2
<b>TAS</b>	2,040	6.7	354.1
<b>NT</b>	465	1.5	176.5
<b>ACT</b>	1,824	6.0	377.0
<b>AUS</b>	30,256	100.0	109.9

**Table 2 - Influenza vaccination rates**

Group	Vaccinated (%)
<b>&lt;5 years</b>	68.2
<b>5-14 years</b>	53.0
<b>15-49 years</b>	63.6
<b>50-64 years</b>	78.6
<b>65+ years</b>	91.6
<b>Aboriginal and/or Torres Strait Islander</b>	69.9
<b>Working with patients</b>	86.2
<b>Overall</b>	82.3

**Table 3 - COVID-19 vaccination rates**

Group	Past 6 months	Past 12 months*	Never Vaccinated
<5 years	0.7	0.7	98.0
5-17 years	1.8	3.9	19.5
18-64 years	15.6	34.2	0.9
65-74 years	26.9	63.0	0.4
75+ years	32.9	69.4	0.6
Aboriginal and/or Torres Strait Islander	12.6	32.5	2.4
Working with patients	17.1	38.8	0.4
Overall	22.3	49.7	1.9

\* Those with a vaccination in the past 6 months are also included in the past 12 months column.

- Table does not include those with a COVID-19 vaccination greater than 12 months ago (ie: row totals will not add to 100%).

**Table 4 - Respiratory Syncytial Virus (RSV) immunisation rates**

Group	Immunised (%)
<2 years (via mother)	31.2
<2 years (via child after birth)	15.6
<2 years (both via mother and via child after birth)	3.1
50-59 years	0.9
60-74 years	10.1
75+ years	19.9
Aboriginal and/or Torres Strait Islander (60+ years)	10.5