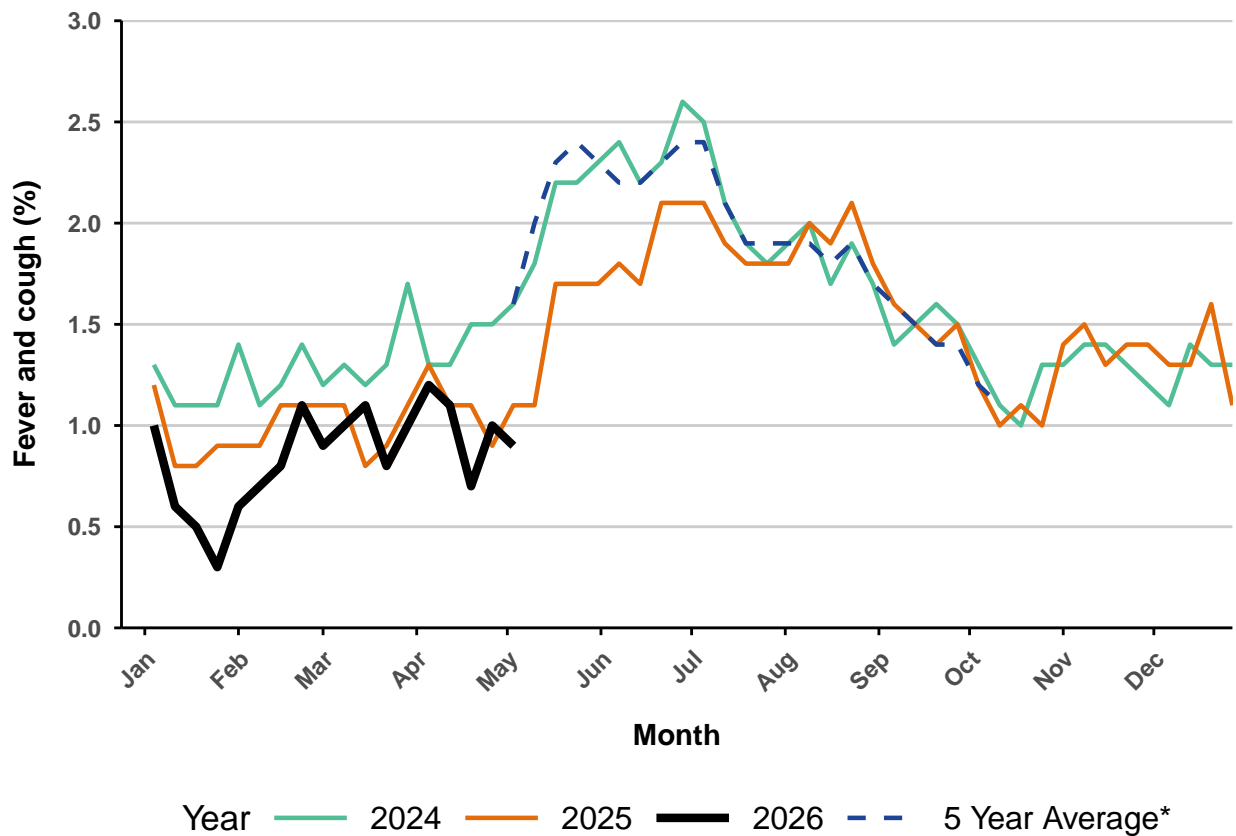


FluTracking Australia Weekly Report
Reporting week Monday 27 April 2026 - Sunday 03 May 2026
(Data used in this report received up to 09:00 AM, Thursday 07 May 2026)
Respiratory illness levels have decreased this week
45425 participants this week
Figure 1 - Respiratory illness activity* (age standardised)

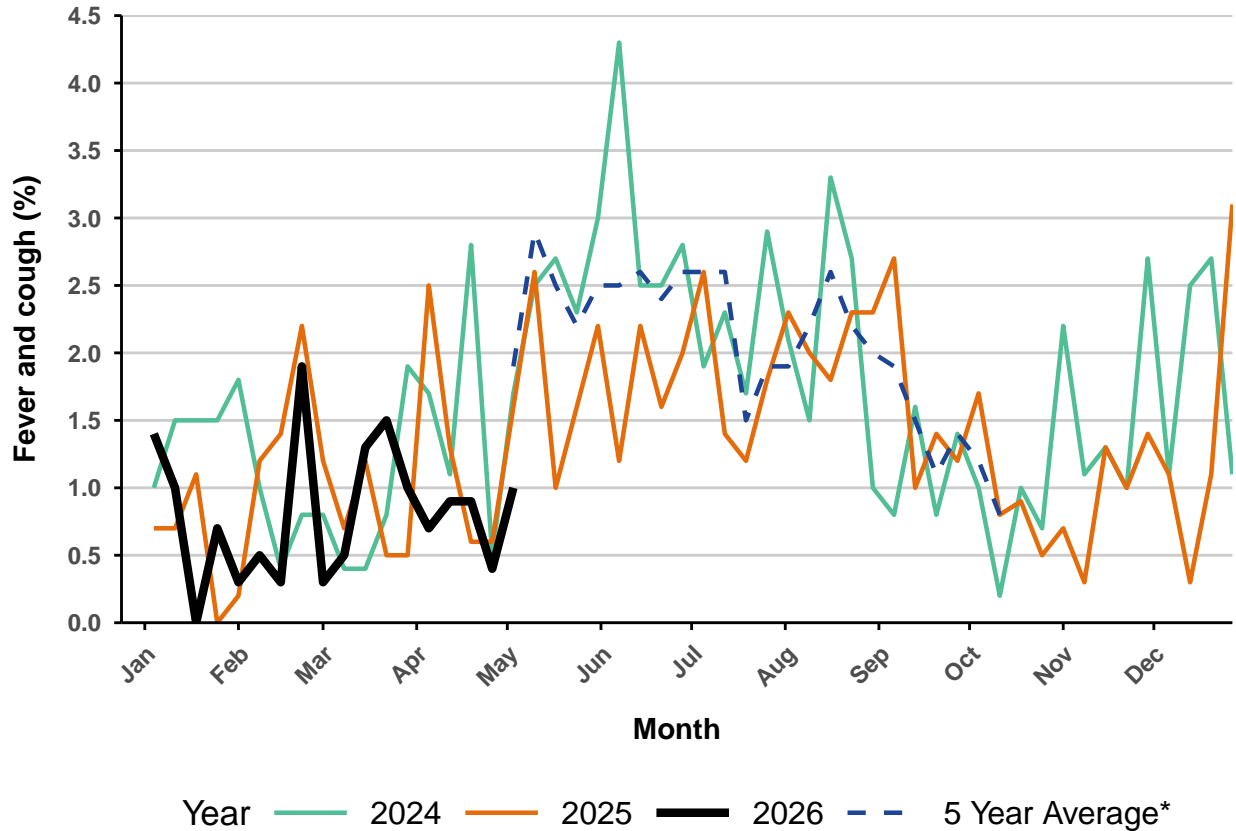
* Respiratory illness activity is defined as fever & cough for this report.

0.9% this week and 1% last week


* 5 year average is calculated using 2019, 2022, 2023, 2024, 2025 data.

Figure 2 - Respiratory illness activity among Aboriginal and Torres Strait Islander participants

1% this week and 0.4% last week

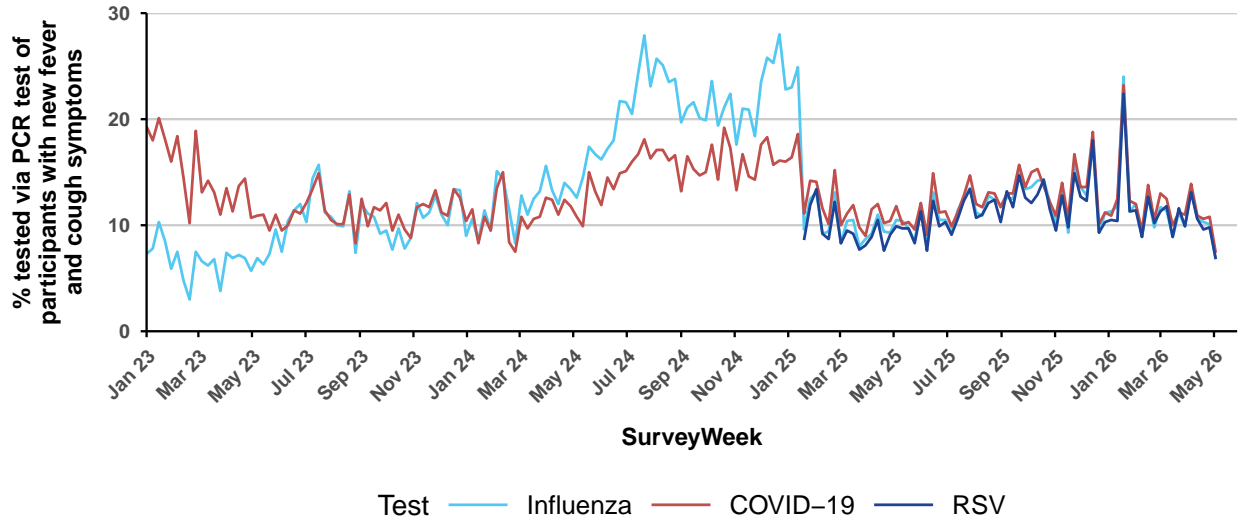


- Total number of Aboriginal and Torres Strait Islander participants this week = 406.

- Average number of Aboriginal and Torres Strait Islander participants in 2026 = 376.

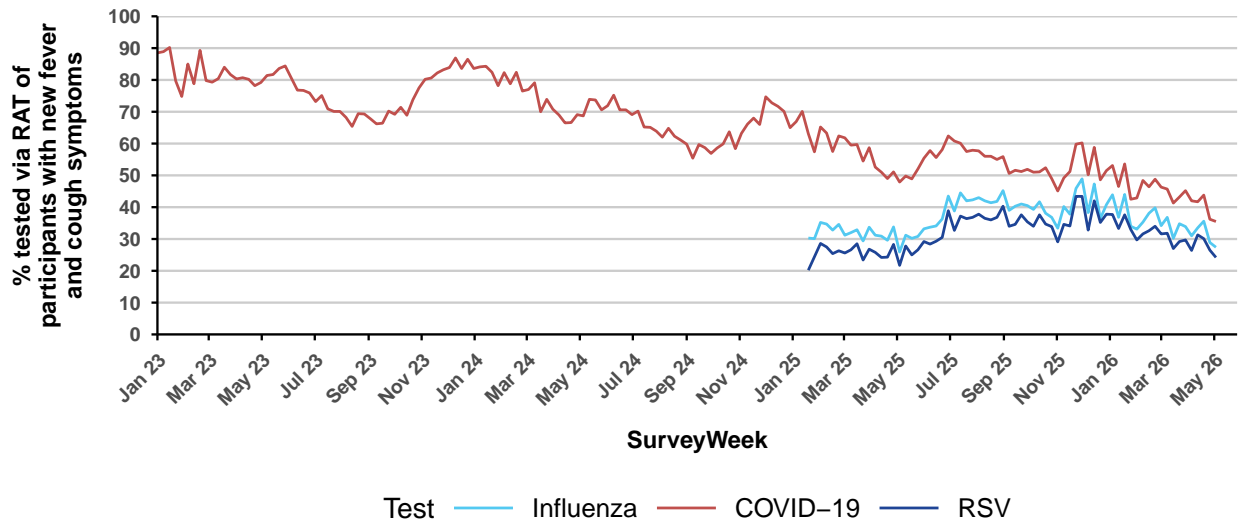
* 5 year average is calculated using 2019, 2022, 2023, 2024, 2025 data.

Figure 3a - Polymerase Chain Reaction (PCR) testing among participants reporting fever and cough symptoms



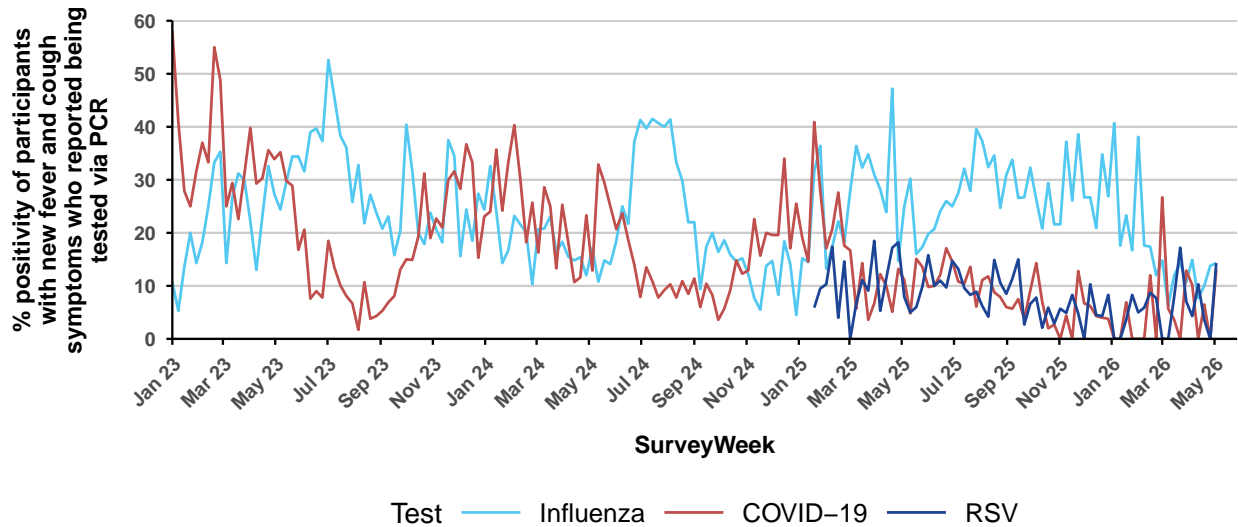
- Influenza PCR: **6.8% (21/310)** this week compared to **10.1%** last week.
- COVID-19 PCR: **7.4% (23/310)** this week compared to **10.8%** last week.
- RSV PCR: **6.8% (21/310)** this week compared to **9.8%** last week.

Figure 3b - Rapid Antigen Testing (RAT) among participants reporting fever and cough symptoms



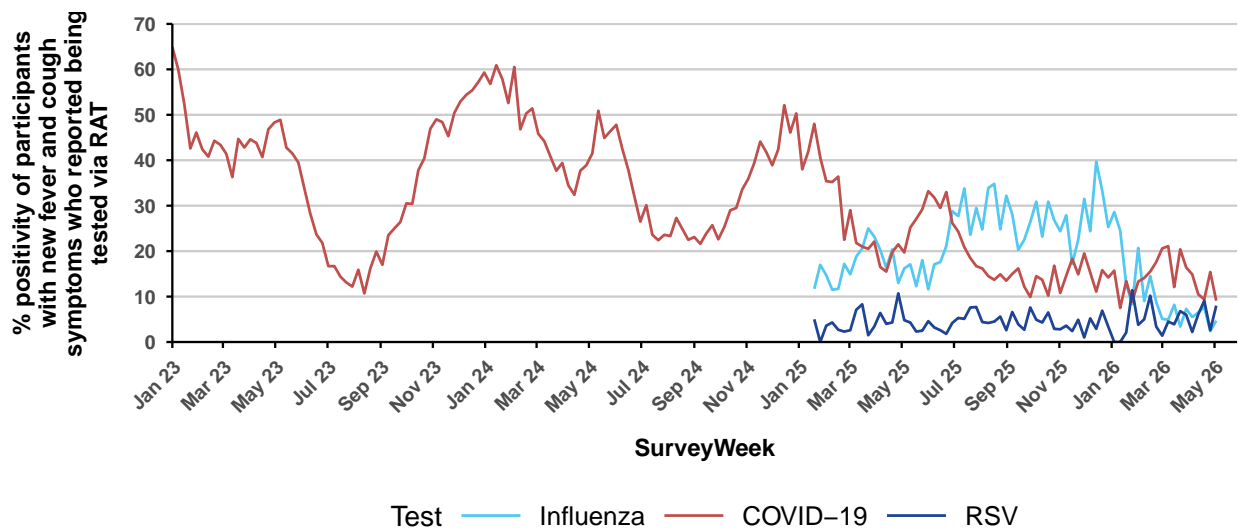
- Influenza RAT: **27.4% (85/310)** this week compared to **28.9%** last week.
- COVID-19 RAT: **35.5% (110/310)** this week compared to **36.2%** last week.
- RSV RAT: **24.2% (75/310)** this week compared to **26.5%** last week.

Figure 4a - PCR test percent positivity among participants reporting fever and cough symptoms



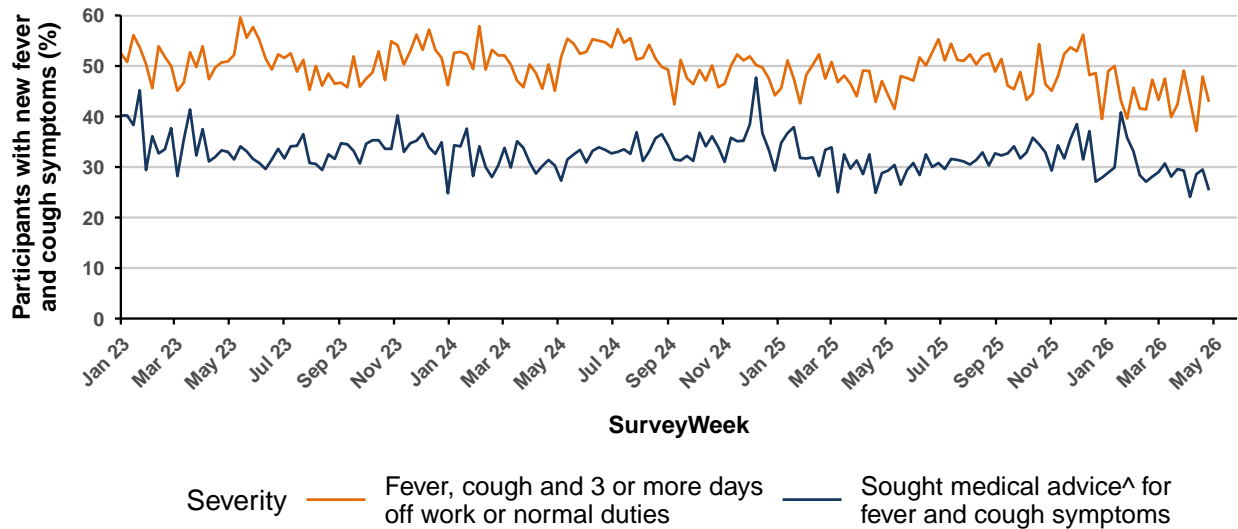
- Influenza PCR: **14.3% (3/21)** this week compared to **13.8%** last week.
(Denominator is participants who self-reported fever and cough symptoms and tested via influenza PCR).
- COVID-19 PCR: **13% (3/23)** this week compared to **0%** last week.
(Denominator is participants who self-reported fever and cough symptoms and tested via COVID-19 PCR).
- RSV PCR: **14.3% (3/21)** this week compared to **0%** last week.
(Denominator is participants who self-reported fever and cough symptoms and tested via RSV PCR).

Figure 4b - RAT percent positivity among participants reporting fever and cough symptoms



- Influenza RAT: **4.7% (4/85)** this week compared to **2.4%** last week.
(Denominator is participants who self-reported fever and cough symptoms and tested via influenza RAT).
- COVID-19 RAT: **9.1% (10/110)** this week compared to **15.4%** last week.
(Denominator is participants who self-reported fever and cough symptoms and tested via COVID-19 RAT).
- RSV RAT: **8% (6/75)** this week compared to **2.6%** last week.
(Denominator is participants who self-reported fever and cough symptoms and tested via RSV RAT).

Figure 5 - Severity of respiratory illness activity



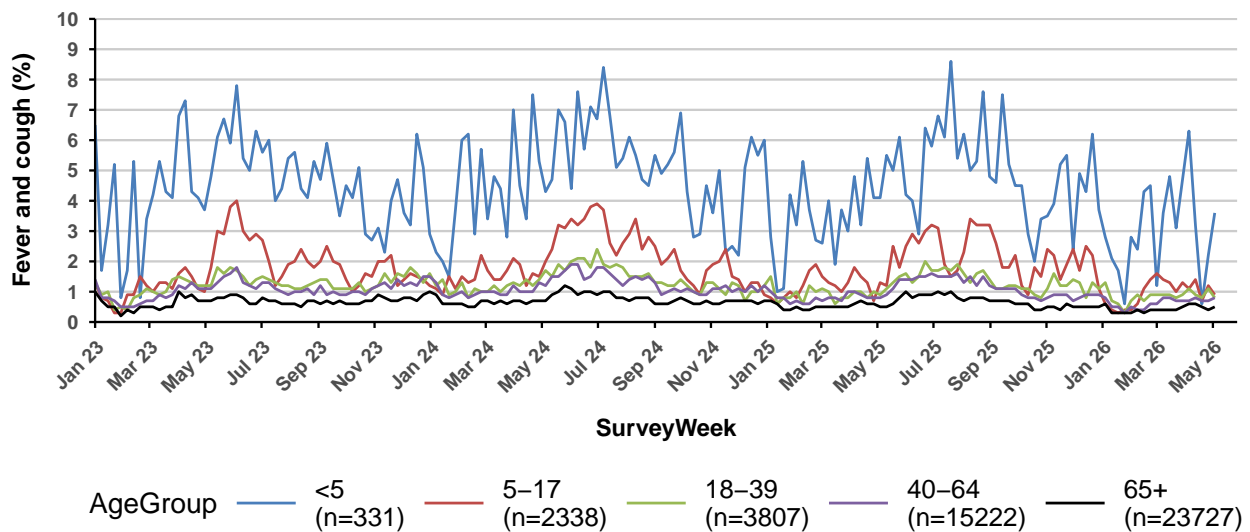
- Fever and cough with an absence of ≥ 3 days: **42.9% (123/287)** this report* compared to **47.9%** last report.

- Sought medical advice[^] for fever and cough symptoms: **25.4% (73/287)** this report* compared to **29.5%** last report.

* Data in this figure is from participants reporting incident fever and cough symptoms commencing last week who were absent ≥ 3 days or sought medical advice last week OR this week due to their ongoing symptoms. Please visit <https://info.flutracking.net/insights/> for more information.

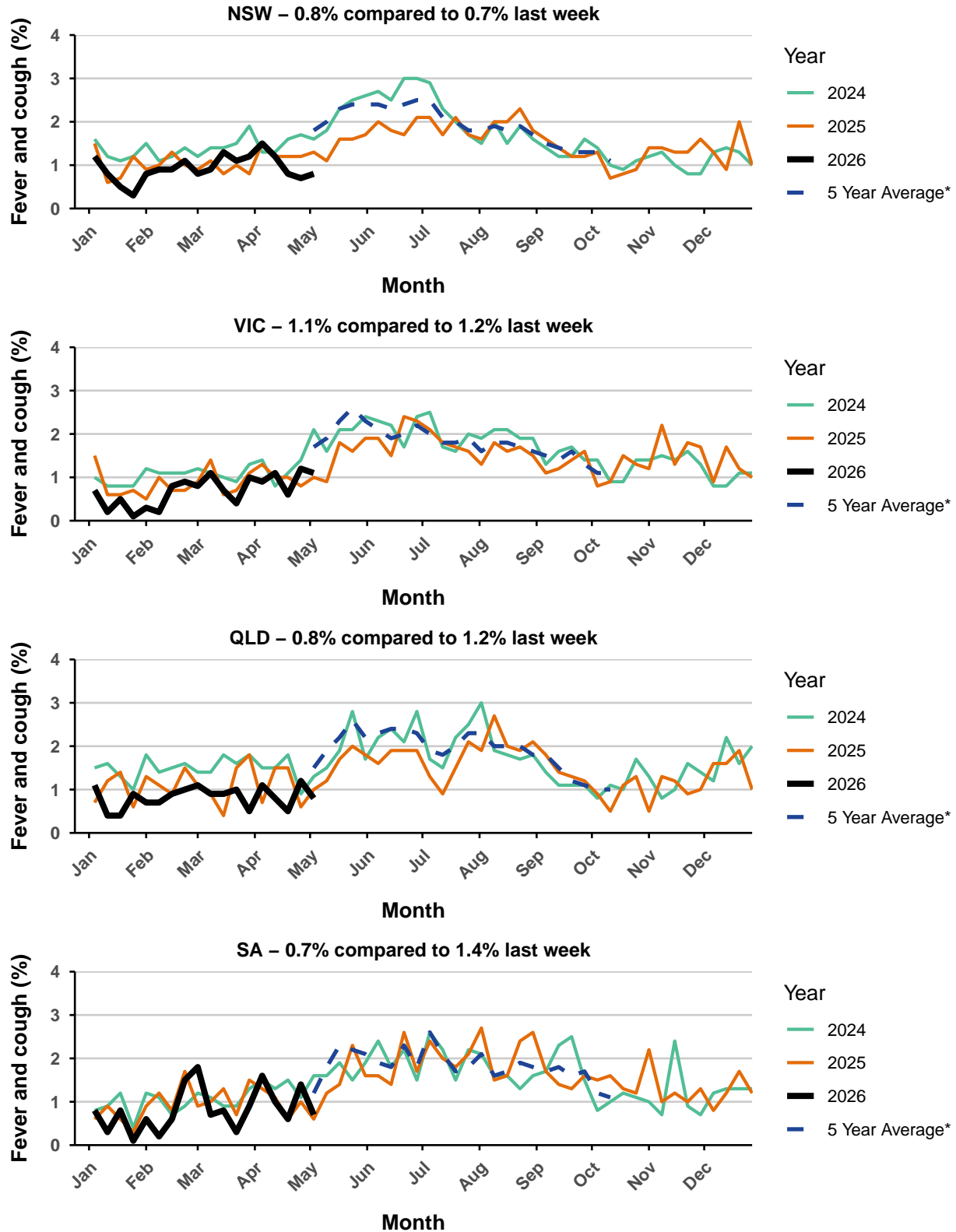
[^] Includes those who sought medical advice from a general practitioner, Aboriginal and Torres Strait Islander health clinic, COVID-19 clinic, emergency department, or were admitted to hospital for fever and cough.

Figure 6 - Respiratory illness activity by age group

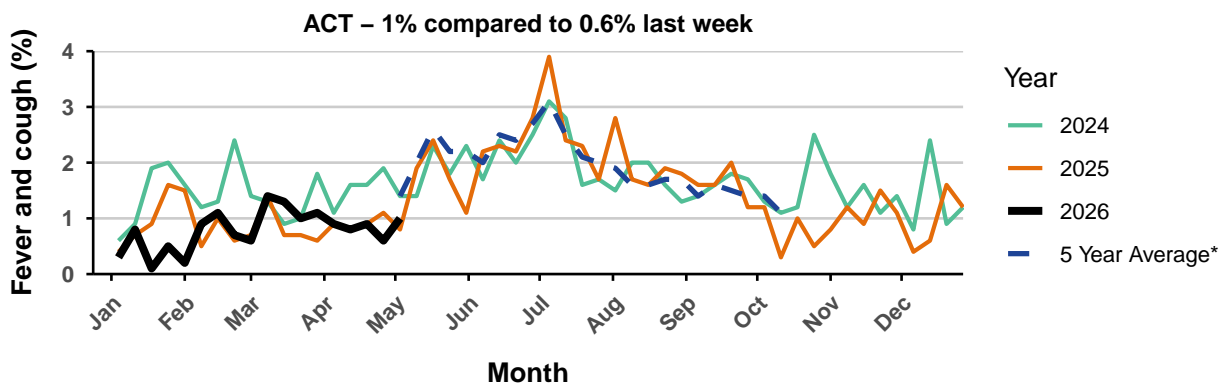
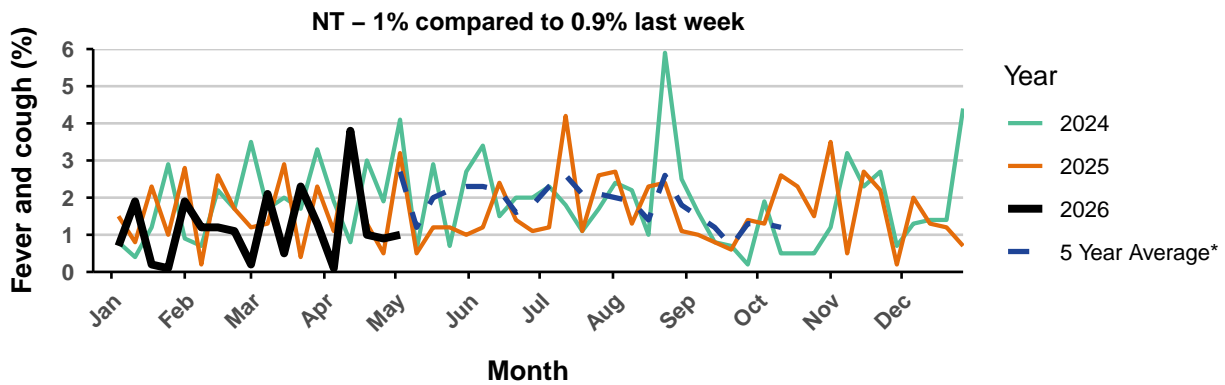
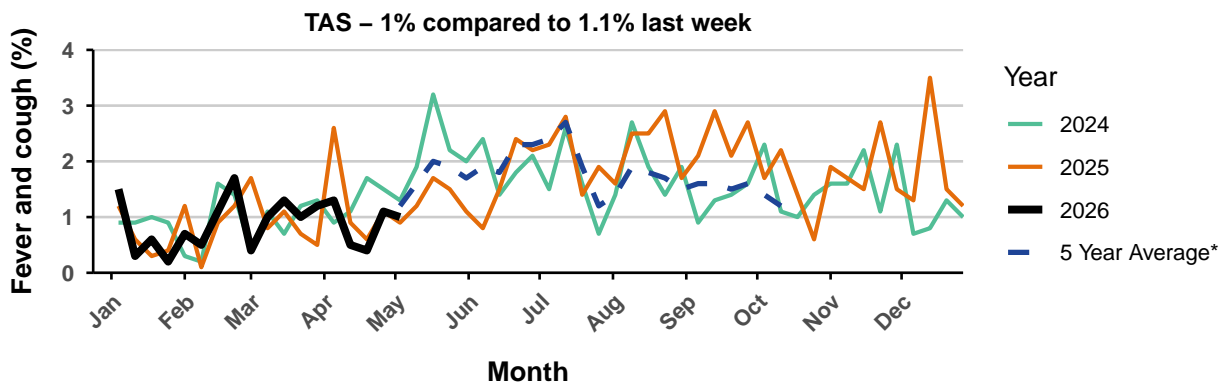
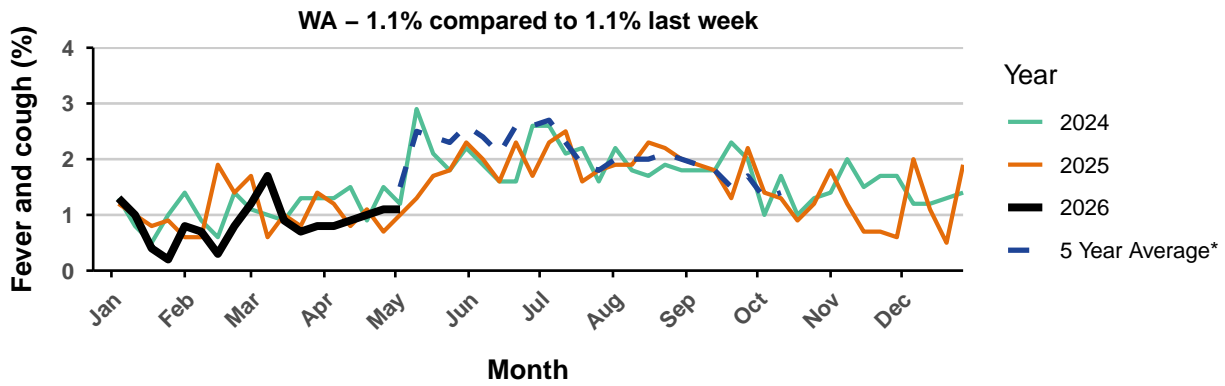


* n = current reporting week participant count. Use caution when interpreting chart where n is low (e.g. less than 1000).

Figure 7 - Respiratory illness activity by state/territory (age standardised)



* 5 year average is calculated using 2019, 2022, 2023, 2024, 2025 data.



* 5 year average is calculated using 2019, 2022, 2023, 2024, 2025 data.

Table 1 - Participation

45425 participants (**47485** last week)

| Jurisdiction | Participants | Percent (%) | Participation Rate/ 100,000 Population |
|--------------|--------------|-------------|---|
| NSW | 16,281 | 35.8 | 188.8 |
| VIC | 9,186 | 20.2 | 129.3 |
| QLD | 5,431 | 12.0 | 95.4 |
| SA | 3,845 | 8.5 | 201.5 |
| WA | 4,237 | 9.3 | 138.4 |
| TAS | 3,046 | 6.7 | 528.2 |
| NT | 628 | 1.4 | 236.5 |
| ACT | 2,771 | 6.1 | 569.9 |
| AUS | 45,425 | 100.0 | 163.8 |

Table 2 - Influenza vaccination rates

| Group | Vaccinated (%) |
|---|----------------|
| <5 years | 28.7 |
| 5-14 years | 23.1 |
| 15-49 years | 28.4 |
| 50-64 years | 38.9 |
| 65+ years | 58.7 |
| Aboriginal and/or Torres Strait Islander | 36.0 |
| Working with patients | 48.2 |
| Overall | 46.7 |

Table 3 - COVID-19 vaccination rates

| Group | Past 6 months | Past 12 months* | Never Vaccinated |
|--|---------------|-----------------|------------------|
| <5 years | 0.3 | 0.6 | 98.2 |
| 5-17 years | 1.7 | 3.3 | 23.4 |
| 18-64 years | 11.6 | 27.7 | 1.1 |
| 65-74 years | 30.9 | 52.5 | 0.5 |
| 75+ years | 37.6 | 58.7 | 0.5 |
| Aboriginal and/or Torres Strait Islander | 12.1 | 23.9 | 4.4 |
| Working with patients | 15.9 | 32.5 | 0.5 |
| Overall | 22.6 | 40.6 | 2.6 |

* Those with a vaccination in the past 6 months are also included in the past 12 months column.

- Table does not include those with a COVID-19 vaccination greater than 12 months ago (ie: row totals will not add to 100%).

Table 4 - Respiratory Syncytial Virus (RSV) immunisation rates

| Group | Immunised (%) |
|--|---------------|
| <2 years (via mother) | 47.0 |
| <2 years (via child after birth) | 15.7 |
| <2 years (both via mother and via child after birth) | 7.2 |
| 50-59 years | 1.1 |
| 60-74 years | 10.7 |
| 75+ years | 21.2 |
| Aboriginal and/or Torres Strait Islander (60+ years) | 14.6 |