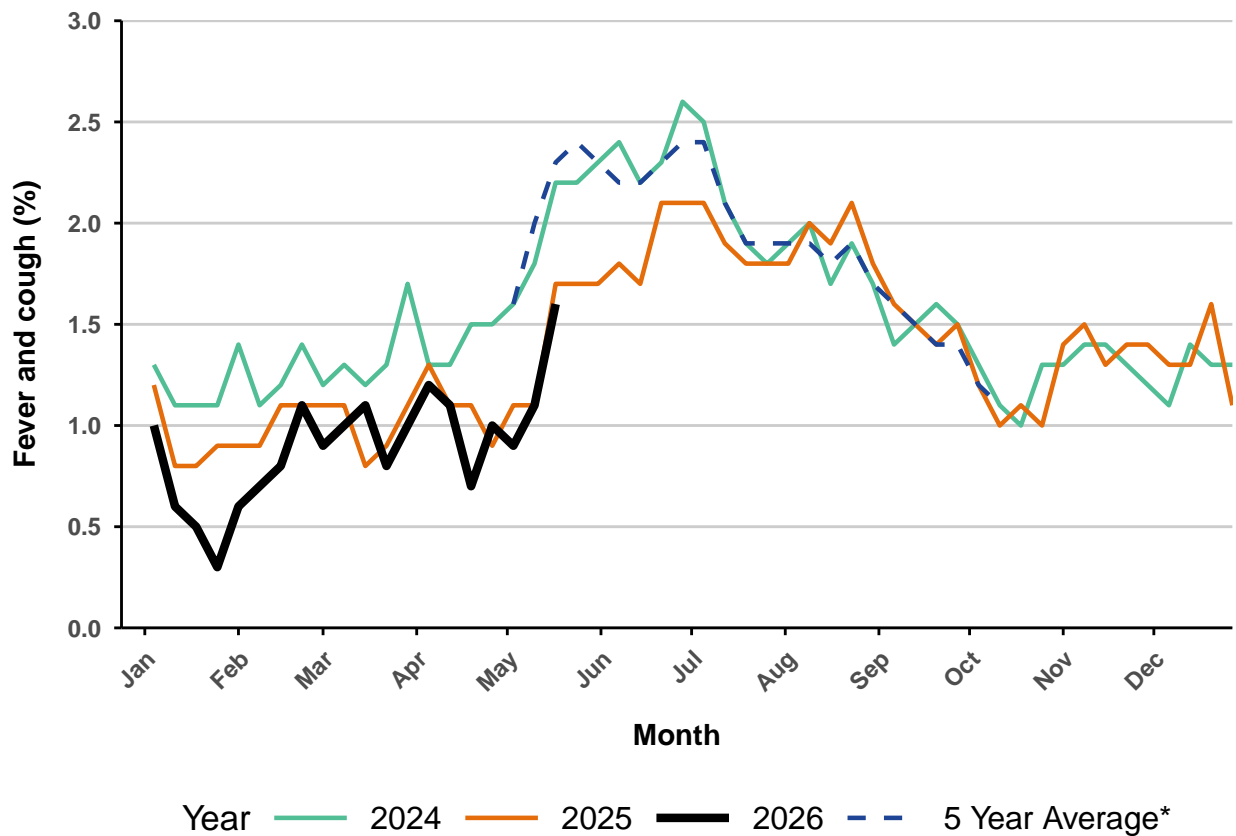


**FluTracking Australia Weekly Report**
**Reporting week Monday 11 May 2026 - Sunday 17 May 2026**
**(Data used in this report received up to 09:00 AM, Thursday 21 May 2026)**
**Respiratory illness levels have increased this week**
**46214 participants this week**
**Figure 1 - Respiratory illness activity\* (age standardised)**

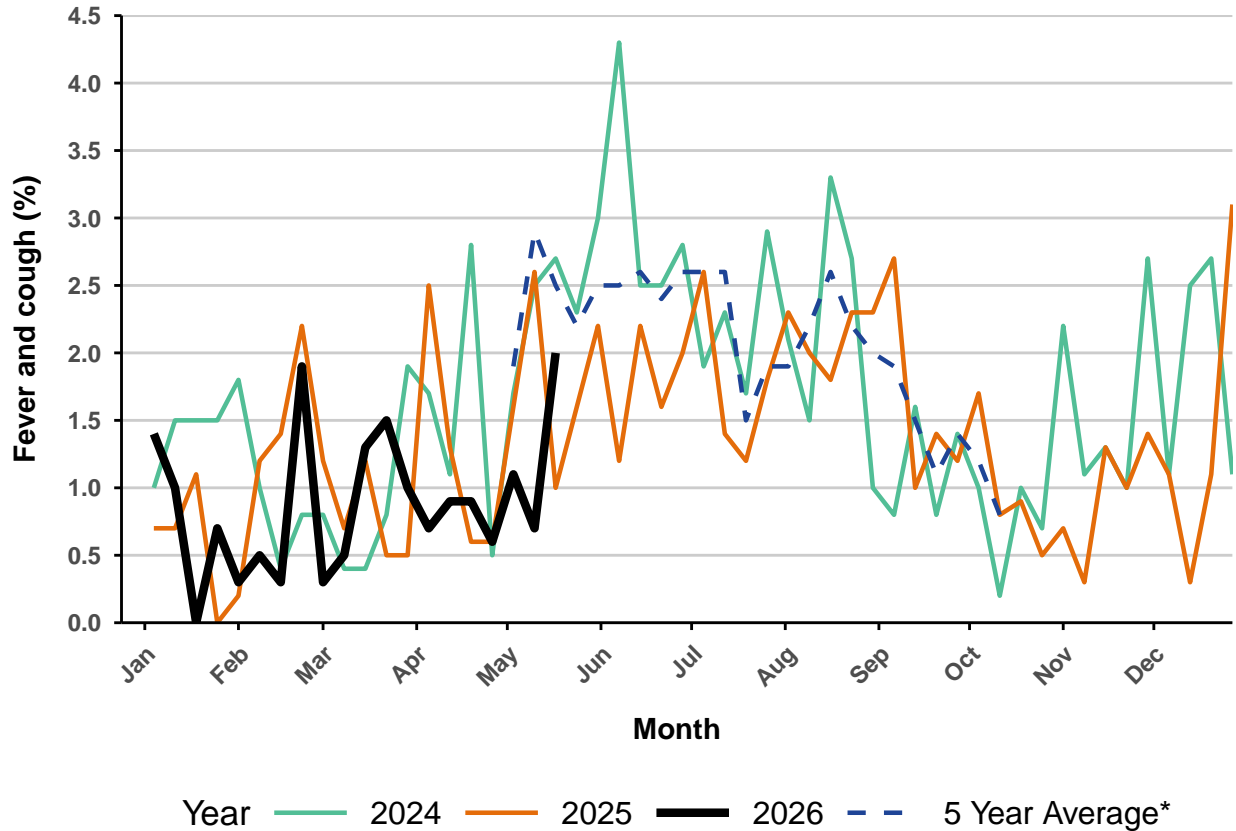
\* Respiratory illness activity is defined as fever &amp; cough for this report.

**1.6% this week and 1.1% last week**


\* 5 year average is calculated using 2019, 2022, 2023, 2024, 2025 data.

**Figure 2 - Respiratory illness activity among Aboriginal and Torres Strait Islander participants**

2% this week and 0.7% last week

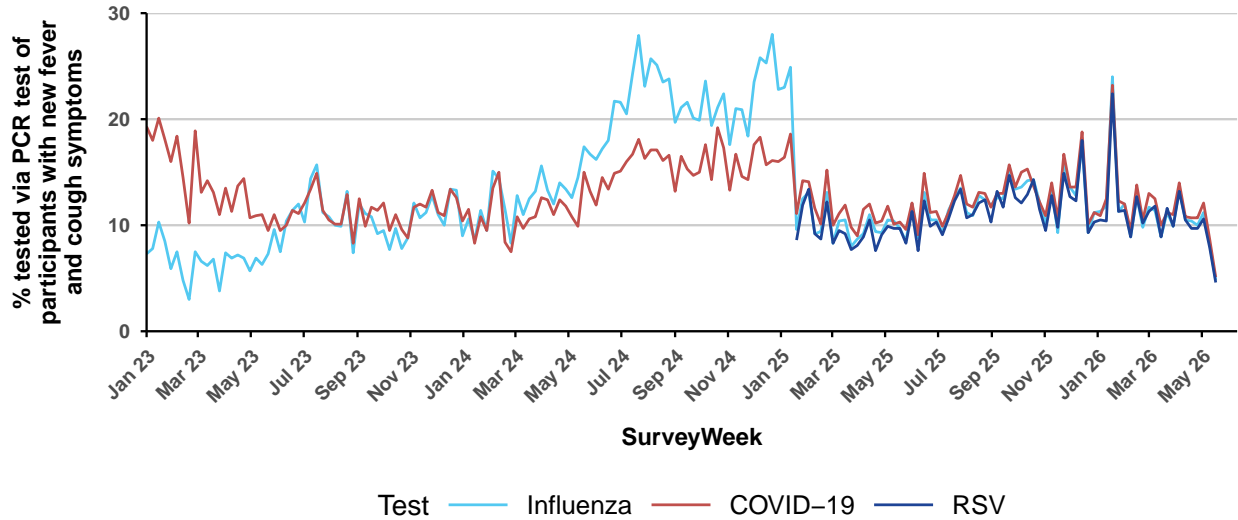


- Total number of Aboriginal and Torres Strait Islander participants this week = 407.

- Average number of Aboriginal and Torres Strait Islander participants in 2026 = 387.

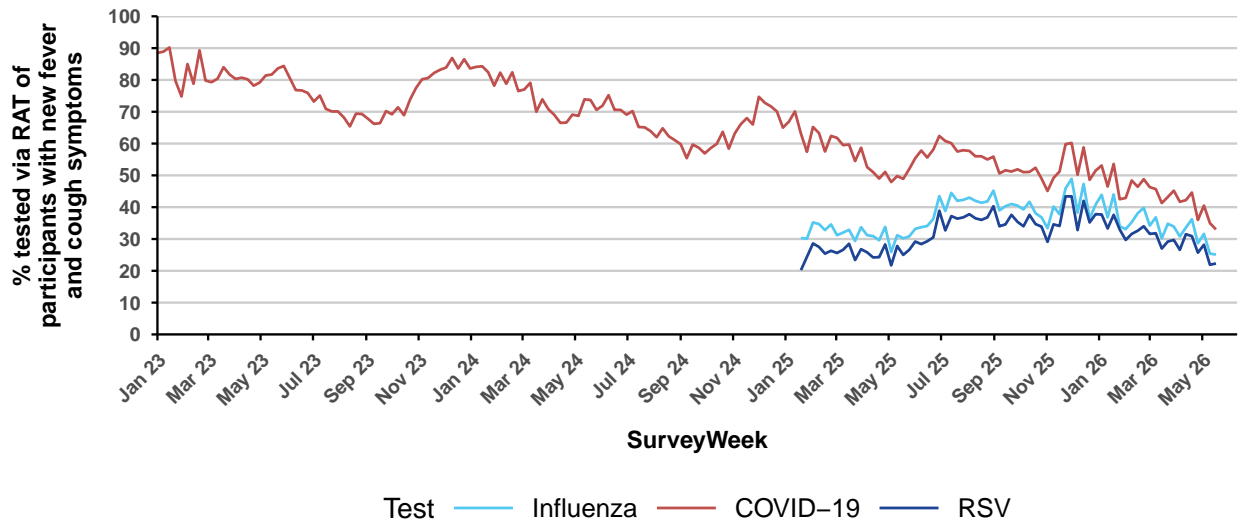
\* 5 year average is calculated using 2019, 2022, 2023, 2024, 2025 data.

**Figure 3a - Polymerase Chain Reaction (PCR) testing among participants reporting fever and cough symptoms**



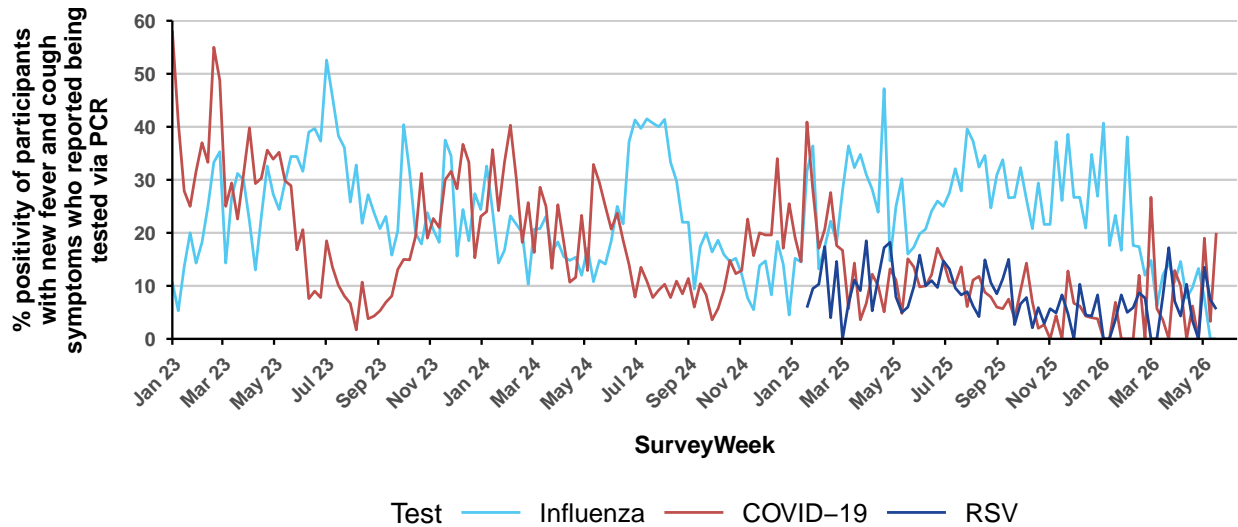
- Influenza PCR: **4.8% (19/394)** this week compared to **8.2%** last week.
- COVID-19 PCR: **5.1% (20/394)** this week compared to **8.7%** last week.
- RSV PCR: **4.6% (18/394)** this week compared to **7.9%** last week.

**Figure 3b - Rapid Antigen Testing (RAT) among participants reporting fever and cough symptoms**



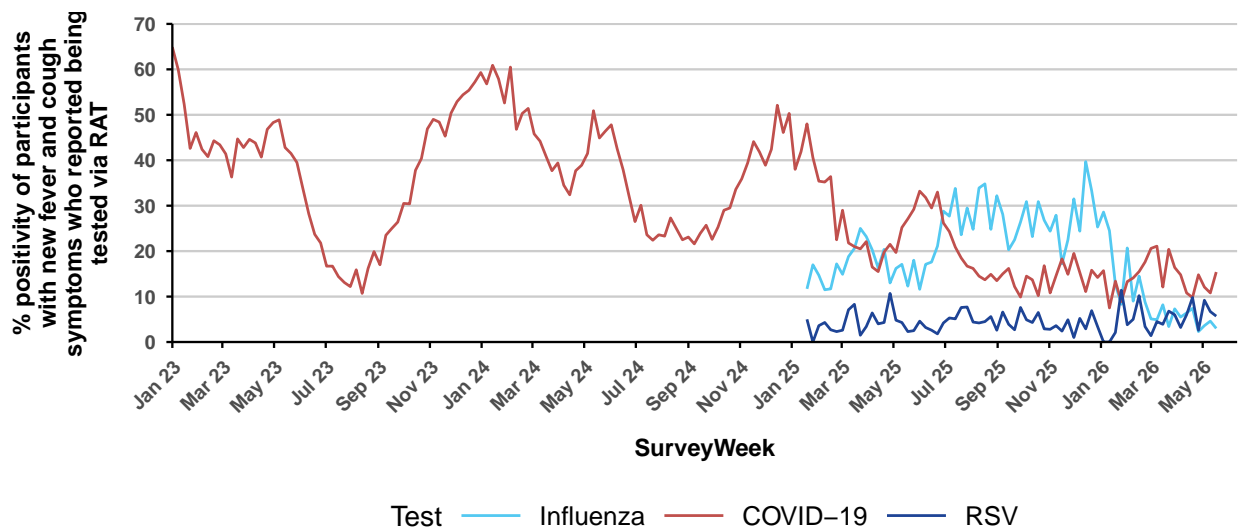
- Influenza RAT: **25.1% (99/394)** this week compared to **25.4%** last week.
- COVID-19 RAT: **33% (130/394)** this week compared to **35%** last week.
- RSV RAT: **22.3% (88/394)** this week compared to **21.9%** last week.

**Figure 4a - PCR test percent positivity among participants reporting fever and cough symptoms**



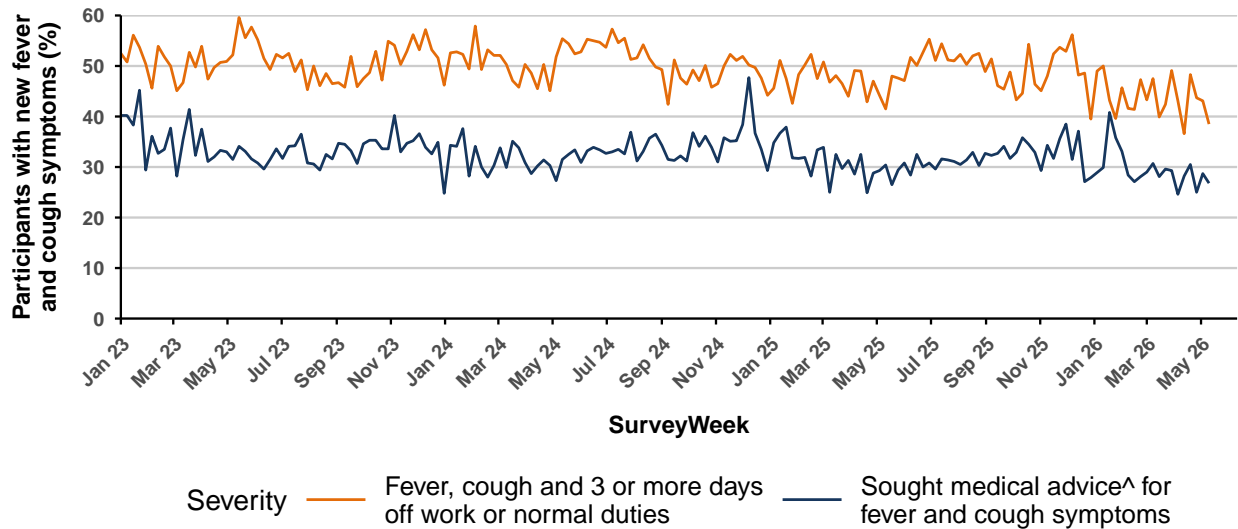
- Influenza PCR: **0% (0/19)** this week compared to **0%** last week.  
(Denominator is participants who self-reported fever and cough symptoms and tested via influenza PCR).
- COVID-19 PCR: **20% (4/20)** this week compared to **3.3%** last week.  
(Denominator is participants who self-reported fever and cough symptoms and tested via COVID-19 PCR).
- RSV PCR: **5.6% (1/18)** this week compared to **7.4%** last week.  
(Denominator is participants who self-reported fever and cough symptoms and tested via RSV PCR).

**Figure 4b - RAT percent positivity among participants reporting fever and cough symptoms**



- Influenza RAT: **3% (3/99)** this week compared to **4.6%** last week.  
(Denominator is participants who self-reported fever and cough symptoms and tested via influenza RAT).
- COVID-19 RAT: **15.4% (20/130)** this week compared to **10.8%** last week.  
(Denominator is participants who self-reported fever and cough symptoms and tested via COVID-19 RAT).
- RSV RAT: **5.7% (5/88)** this week compared to **6.7%** last week.  
(Denominator is participants who self-reported fever and cough symptoms and tested via RSV RAT).

**Figure 5 - Severity of respiratory illness activity**



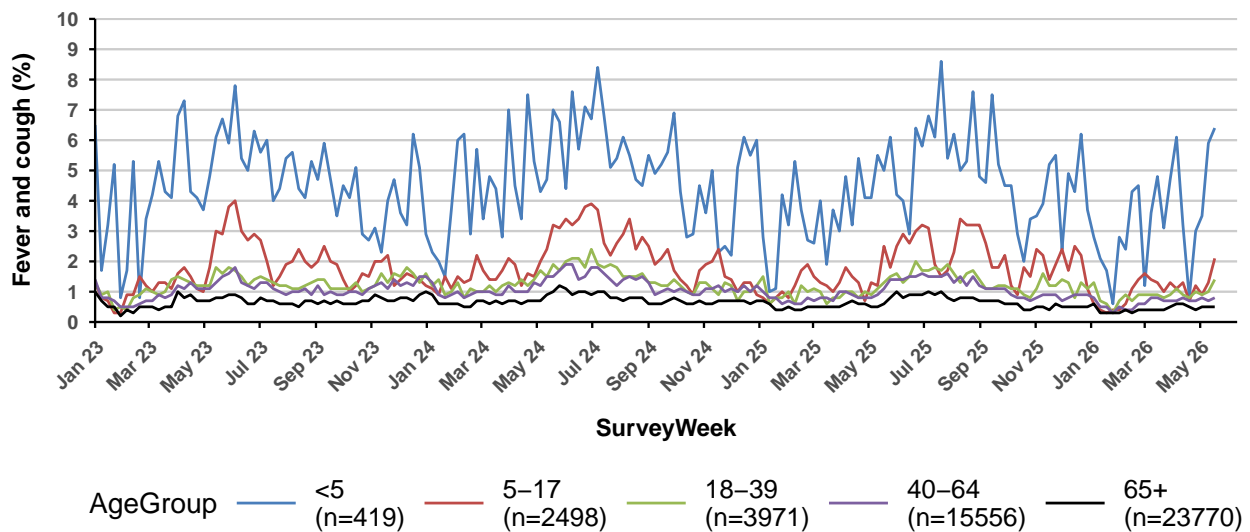
- Fever and cough with an absence of  $\geq 3$  days: **38.5% (132/343)** this report\* compared to **43.1%** last report.

- Sought medical advice^ for fever and cough symptoms: **26.8% (92/343)** this report\* compared to **28.7%** last report.

\* Data in this figure is from participants reporting incident fever and cough symptoms commencing last week who were absent  $\geq 3$  days or sought medical advice last week OR this week due to their ongoing symptoms. Please visit <https://info.flutracking.net/insights/> for more information.

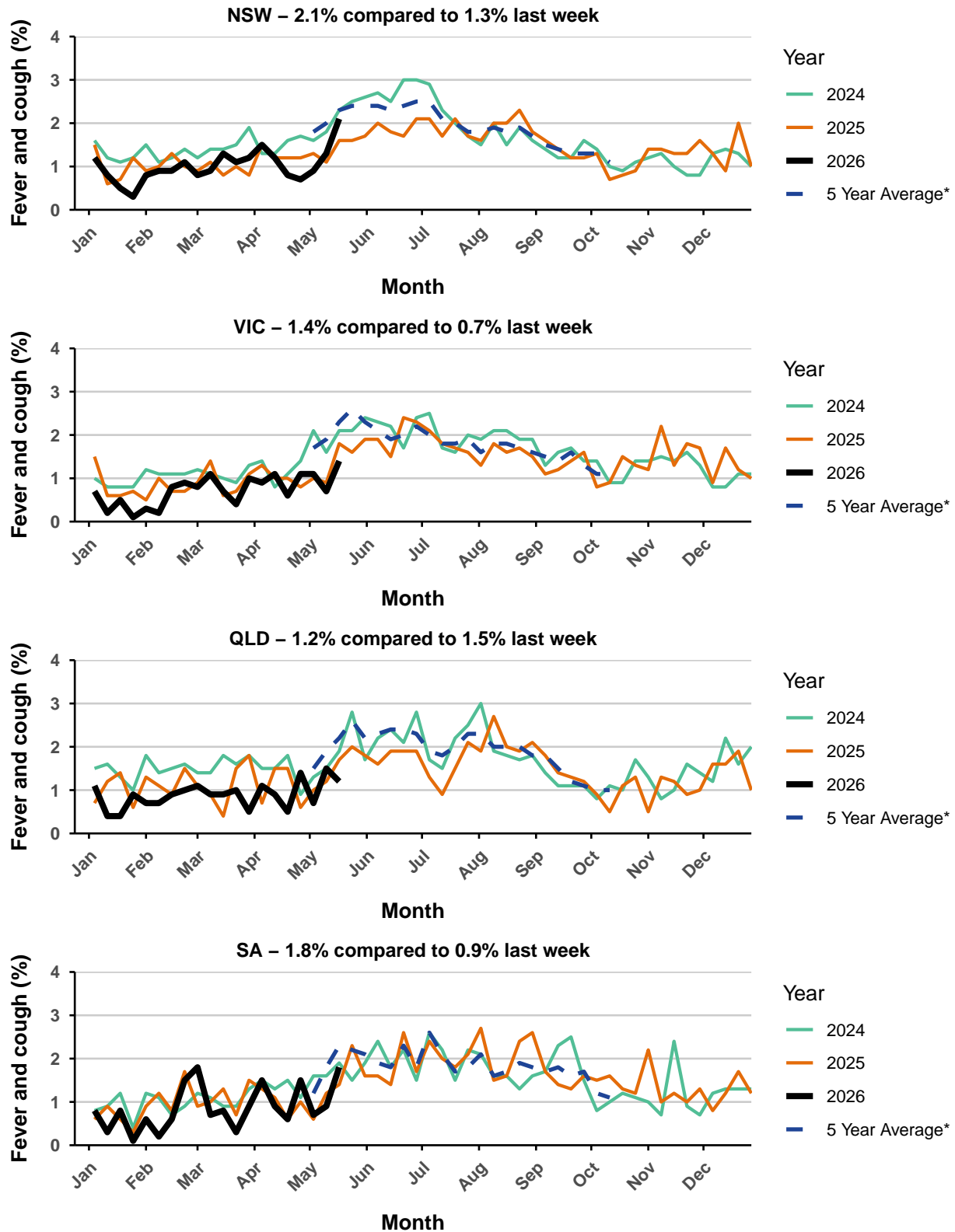
^ Includes those who sought medical advice from a general practitioner, Aboriginal and Torres Strait Islander health clinic, COVID-19 clinic, emergency department, or were admitted to hospital for fever and cough.

**Figure 6 - Respiratory illness activity by age group**

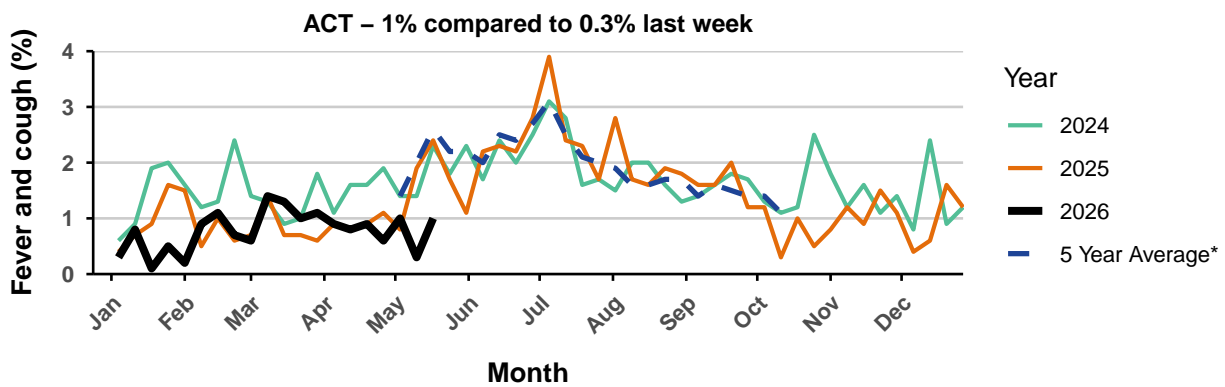
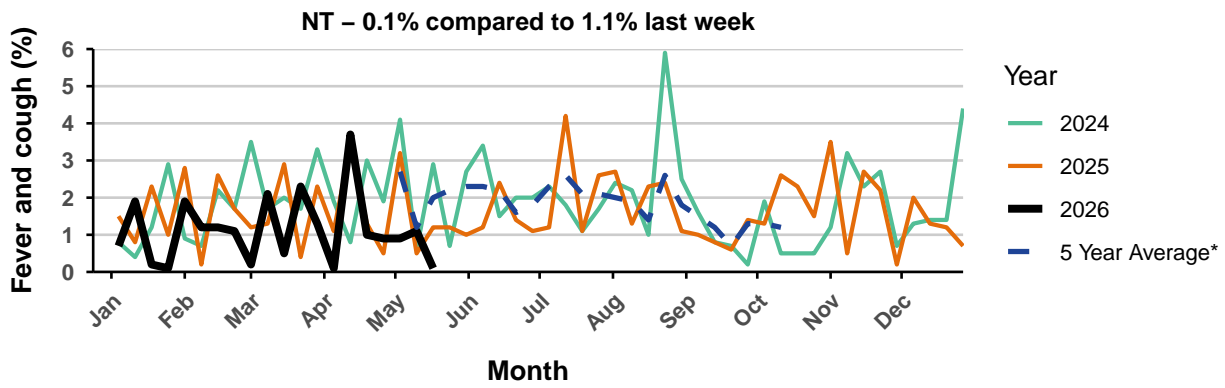
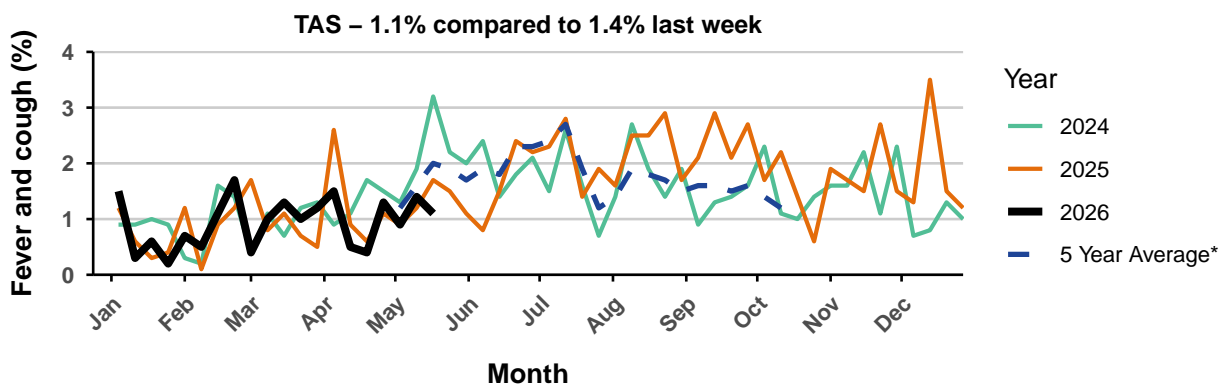
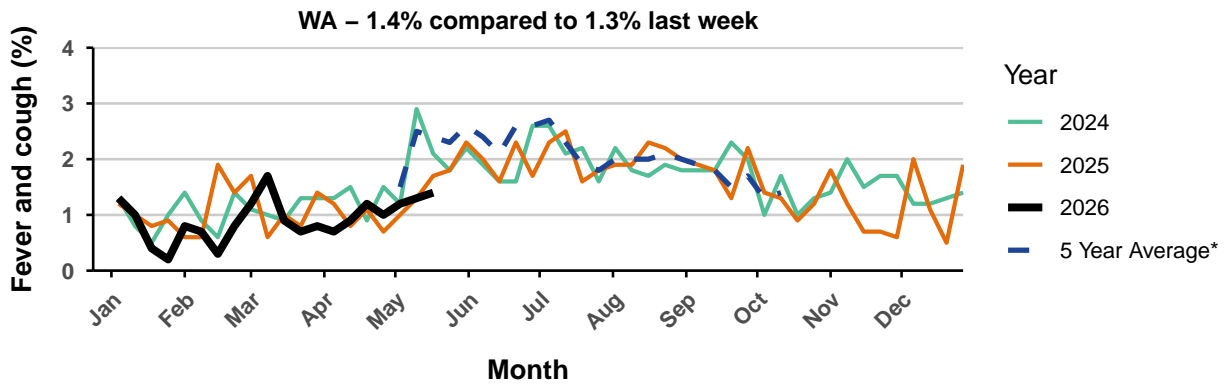


\* n = current reporting week participant count. Use caution when interpreting chart where n is low (e.g. less than 1000).

**Figure 7 - Respiratory illness activity by state/territory (age standardised)**



\* 5 year average is calculated using 2019, 2022, 2023, 2024, 2025 data.



\* 5 year average is calculated using 2019, 2022, 2023, 2024, 2025 data.

**Table 1 - Participation**

**46214** participants (**48906** last week)

Jurisdiction	Participants	Percent (%)	Participation Rate/ 100,000 Population
<b>NSW</b>	16,489	35.7	191.2
<b>VIC</b>	9,296	20.1	130.9
<b>QLD</b>	5,576	12.1	98.0
<b>SA</b>	3,970	8.6	208.0
<b>WA</b>	4,345	9.4	141.9
<b>TAS</b>	3,109	6.7	539.1
<b>NT</b>	647	1.4	243.7
<b>ACT</b>	2,782	6.0	572.2
<b>AUS</b>	46,214	100.0	166.7

**Table 2 - Influenza vaccination rates**

Group	Vaccinated (%)
<b>&lt;5 years</b>	43.9
<b>5-14 years</b>	34.6
<b>15-49 years</b>	42.7
<b>50-64 years</b>	56.1
<b>65+ years</b>	73.2
<b>Aboriginal and/or Torres Strait Islander</b>	51.8
<b>Working with patients</b>	65.1
<b>Overall</b>	61.4

**Table 3 - COVID-19 vaccination rates**

Group	Past 6 months	Past 12 months*	Never Vaccinated
<5 years	0.7	1.2	98.1
5-17 years	3.7	4.5	24.9
18-64 years	15.8	27.9	1.2
65-74 years	37.6	54.1	0.4
75+ years	44.6	60.1	0.7
Aboriginal and/or Torres Strait Islander	17.7	26.0	5.4
Working with patients	19.9	32.3	0.6
Overall	27.7	41.2	3.0

\* Those with a vaccination in the past 6 months are also included in the past 12 months column.

- Table does not include those with a COVID-19 vaccination greater than 12 months ago (ie: row totals will not add to 100%).

**Table 4 - Respiratory Syncytial Virus (RSV) immunisation rates**

Group	Immunised (%)
<2 years (via mother)	45.9
<2 years (via child after birth)	16.2
<2 years (both via mother and via child after birth)	9.9
50-59 years	1.2
60-74 years	11.0
75+ years	24.9
Aboriginal and/or Torres Strait Islander (60+ years)	15.6