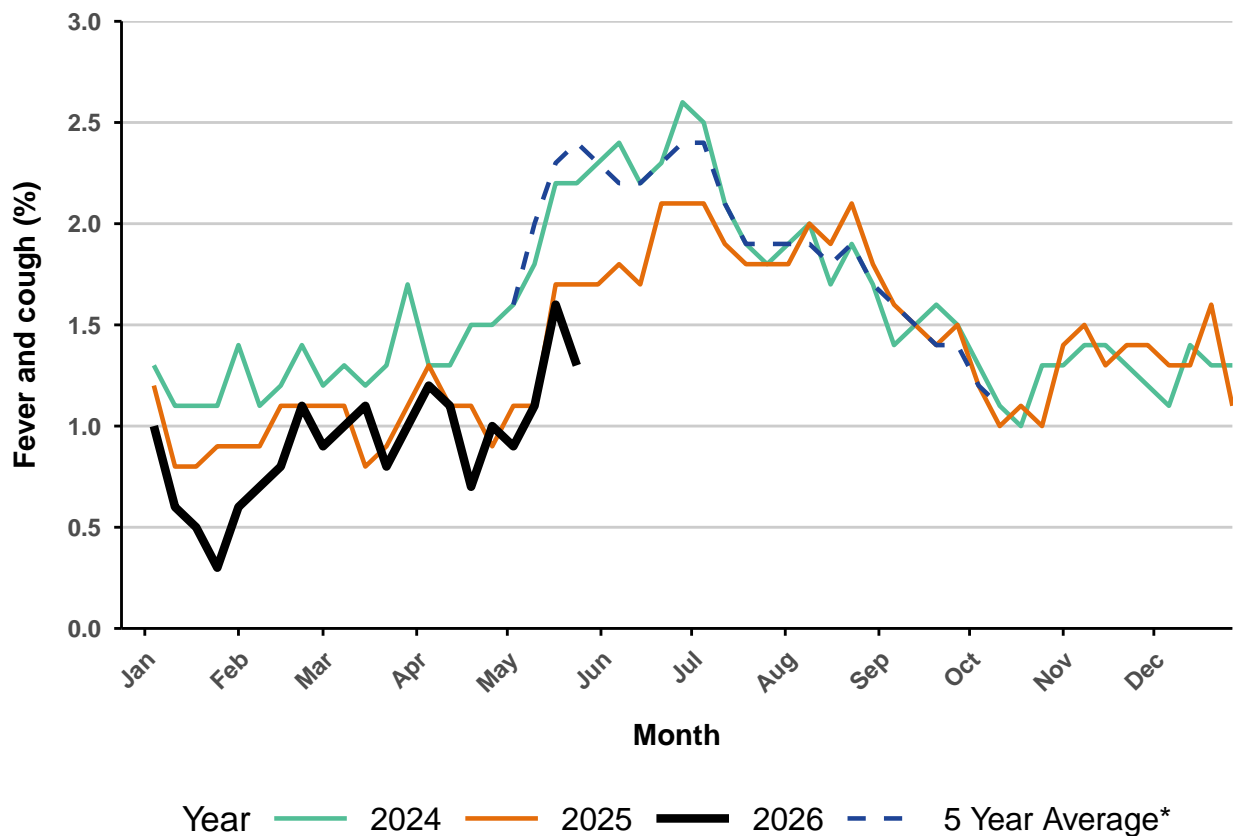


**FluTracking Australia Weekly Report**
**Reporting week Monday 18 May 2026 - Sunday 24 May 2026**
**(Data used in this report received up to 09:00 AM, Thursday 28 May 2026)**
**Respiratory illness levels have decreased this week**
**46068 participants this week**
**Figure 1 - Respiratory illness activity\* (age standardised)**

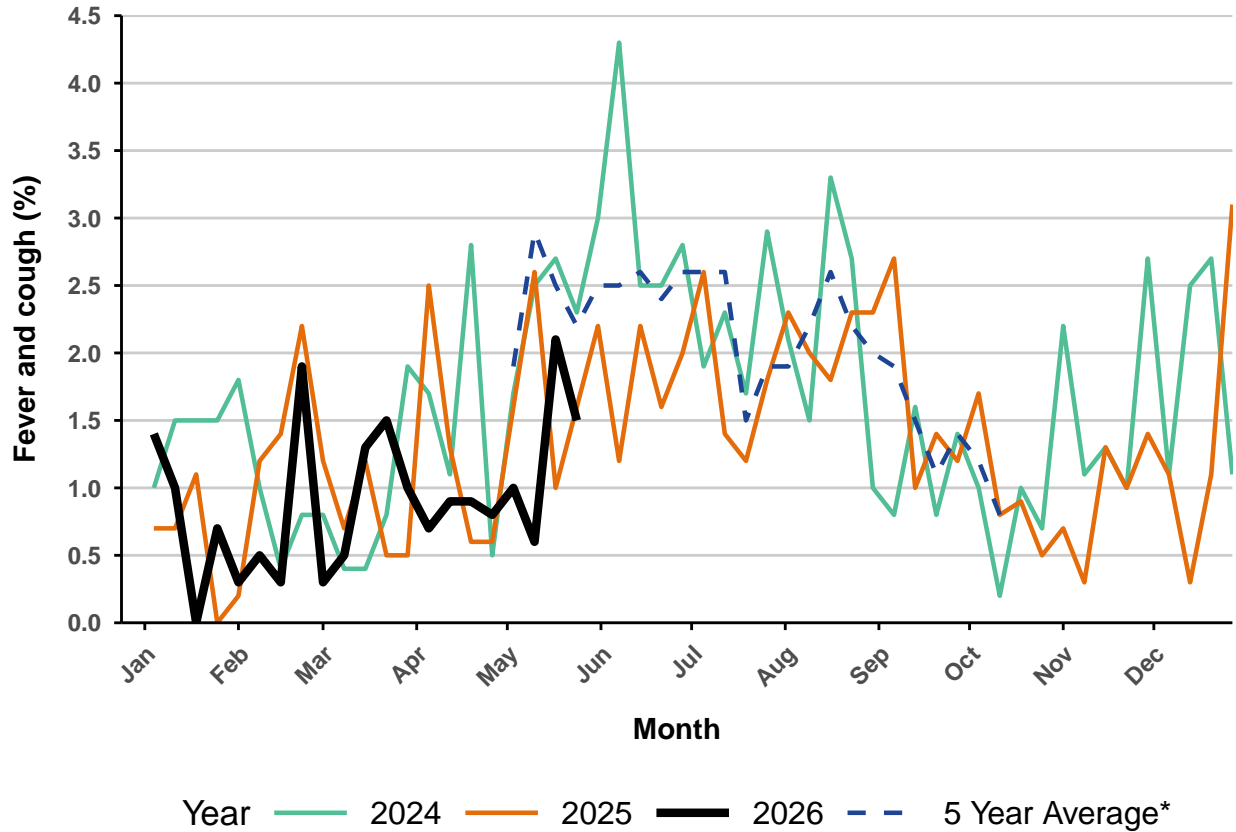
\* Respiratory illness activity is defined as fever &amp; cough for this report.

**1.3% this week and 1.6% last week**


\* 5 year average is calculated using 2019, 2022, 2023, 2024, 2025 data.

**Figure 2 - Respiratory illness activity among Aboriginal and Torres Strait Islander participants**

1.5% this week and 2.1% last week

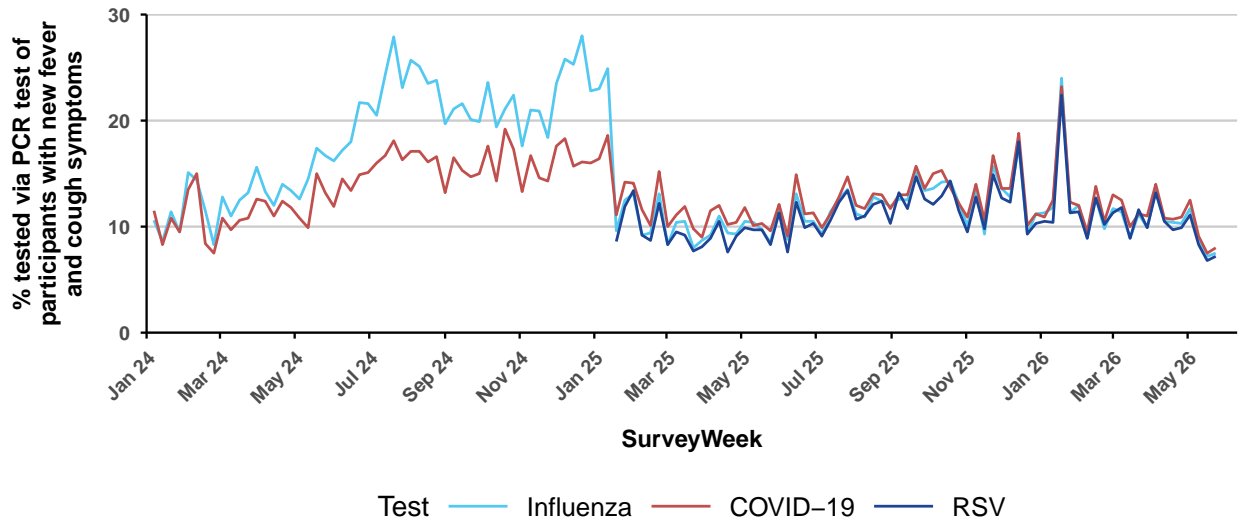


- Total number of Aboriginal and Torres Strait Islander participants this week = 393.

- Average number of Aboriginal and Torres Strait Islander participants in 2026 = 390.

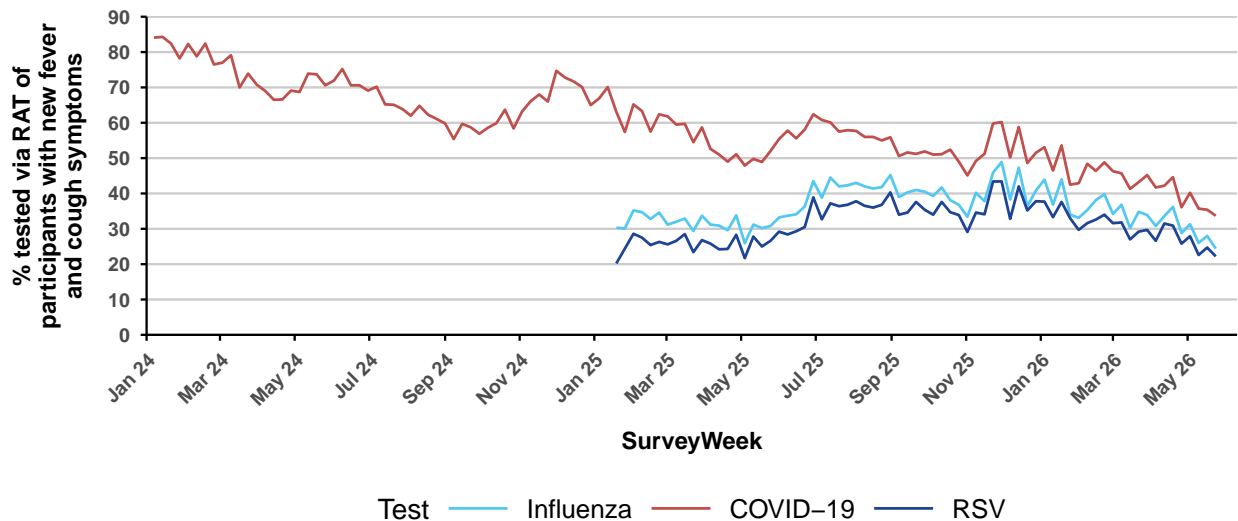
\* 5 year average is calculated using 2019, 2022, 2023, 2024, 2025 data.

**Figure 3a - Polymerase Chain Reaction (PCR) testing among participants reporting fever and cough symptoms**



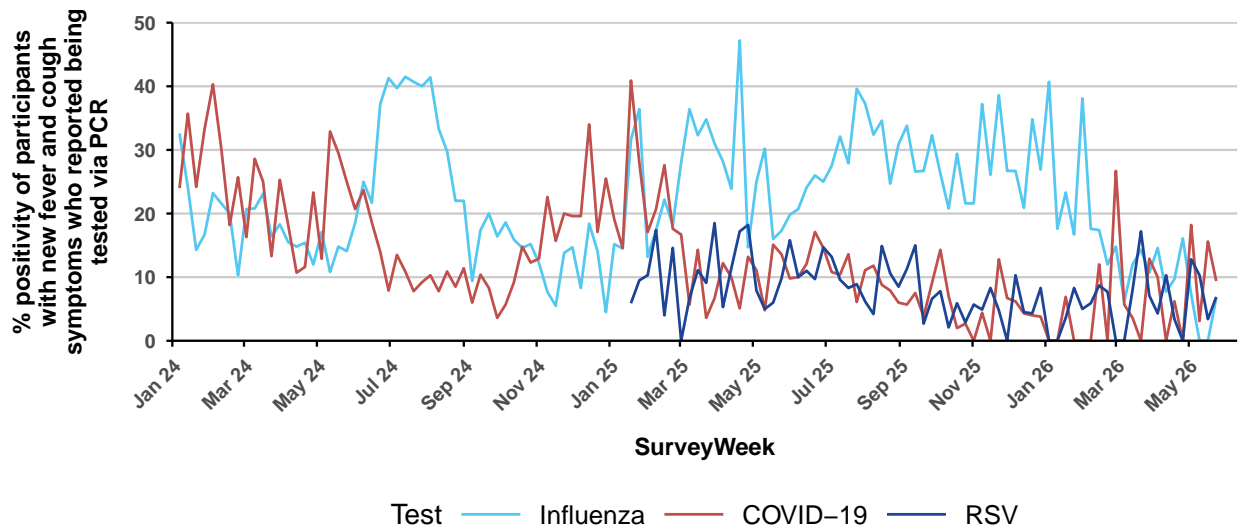
- Influenza PCR: **7.5% (30/401)** this week compared to **7.2%** last week.
- COVID-19 PCR: **8% (32/401)** this week compared to **7.5%** last week.
- RSV PCR: **7.2% (29/401)** this week compared to **6.8%** last week.

**Figure 3b - Rapid Antigen Testing (RAT) among participants reporting fever and cough symptoms**



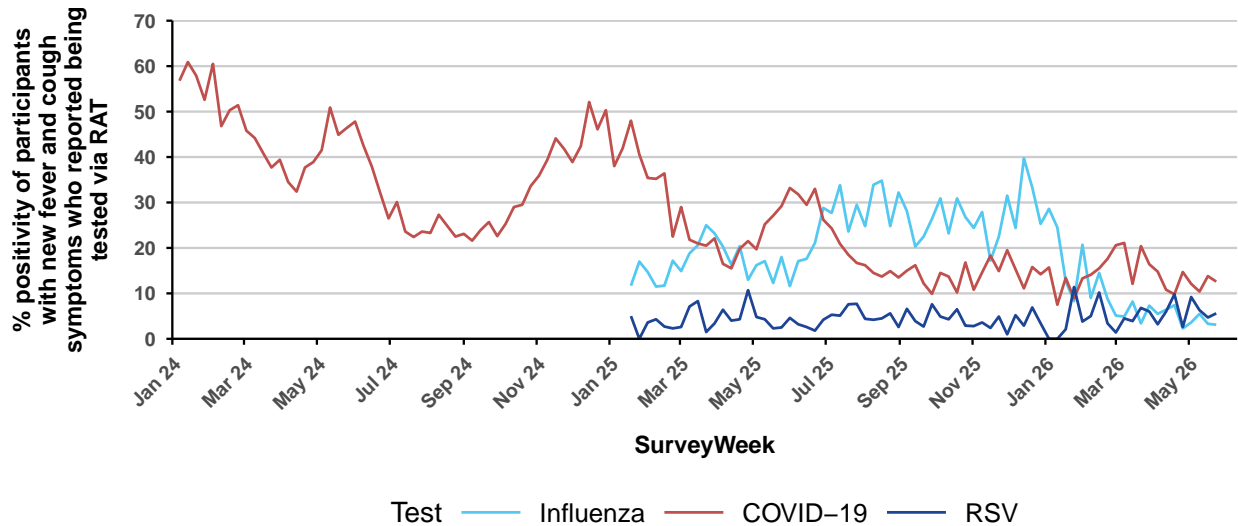
- Influenza RAT: **24.4% (98/401)** this week compared to **28%** last week.
- COVID-19 RAT: **33.7% (135/401)** this week compared to **35.4%** last week.
- RSV RAT: **22.2% (89/401)** this week compared to **24.7%** last week.

**Figure 4a - PCR test percent positivity among participants reporting fever and cough symptoms**



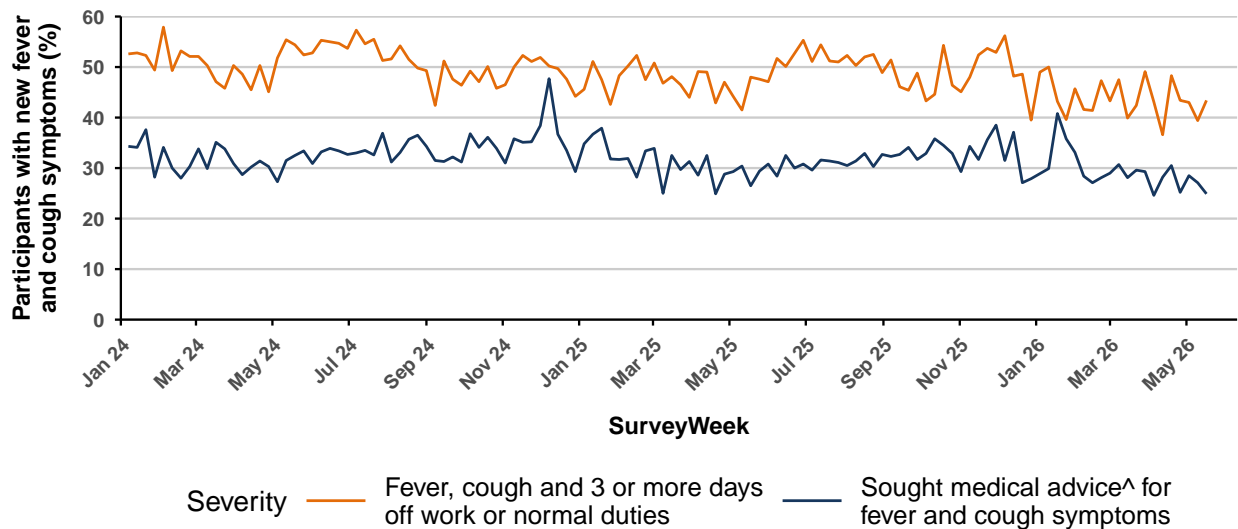
- Influenza PCR: **6.7% (2/30)** this week compared to **0%** last week.  
(Denominator is participants who self-reported fever and cough symptoms and tested via influenza PCR).
- COVID-19 PCR: **9.4% (3/32)** this week compared to **15.6%** last week.  
(Denominator is participants who self-reported fever and cough symptoms and tested via COVID-19 PCR).
- RSV PCR: **6.9% (2/29)** this week compared to **3.4%** last week.  
(Denominator is participants who self-reported fever and cough symptoms and tested via RSV PCR).

**Figure 4b - RAT percent positivity among participants reporting fever and cough symptoms**



- Influenza RAT: **3.1% (3/98)** this week compared to **3.3%** last week.  
(Denominator is participants who self-reported fever and cough symptoms and tested via influenza RAT).
- COVID-19 RAT: **12.6% (17/135)** this week compared to **13.8%** last week.  
(Denominator is participants who self-reported fever and cough symptoms and tested via COVID-19 RAT).
- RSV RAT: **5.6% (5/89)** this week compared to **4.7%** last week.  
(Denominator is participants who self-reported fever and cough symptoms and tested via RSV RAT).

**Figure 5 - Severity of respiratory illness activity**



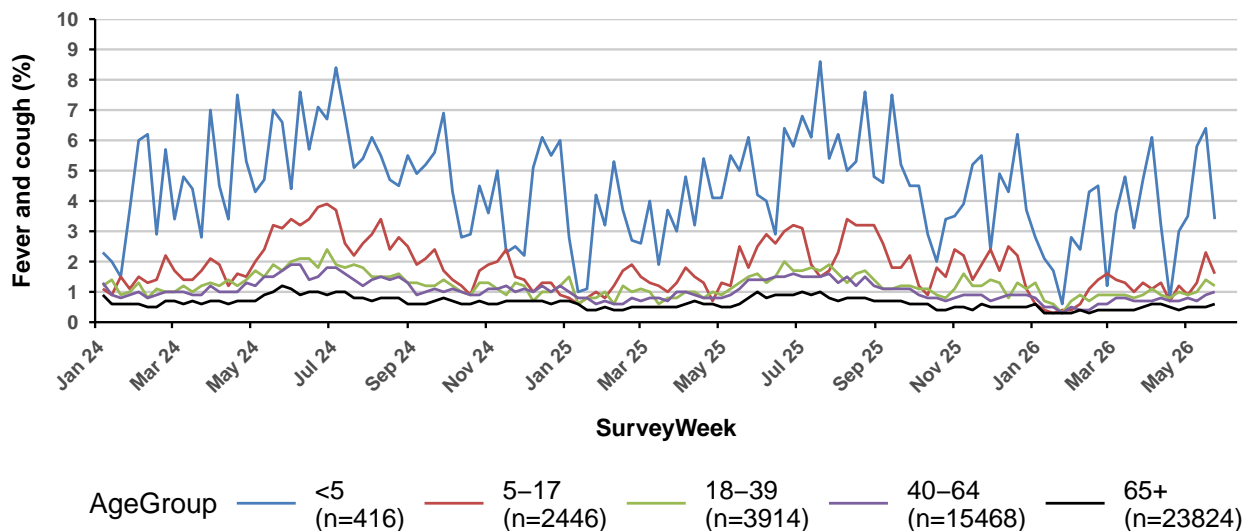
- Fever and cough with an absence of  $\geq 3$  days: **43.4% (186/429)** this report\* compared to **39.4%** last report.

- Sought medical advice<sup>^</sup> for fever and cough symptoms: **24.9% (107/429)** this report\* compared to **27.1%** last report.

\* Data in this figure is from participants reporting incident fever and cough symptoms commencing last week who were absent  $\geq 3$  days or sought medical advice last week OR this week due to their ongoing symptoms. Please visit <https://info.flutracking.net/insights/> for more information.

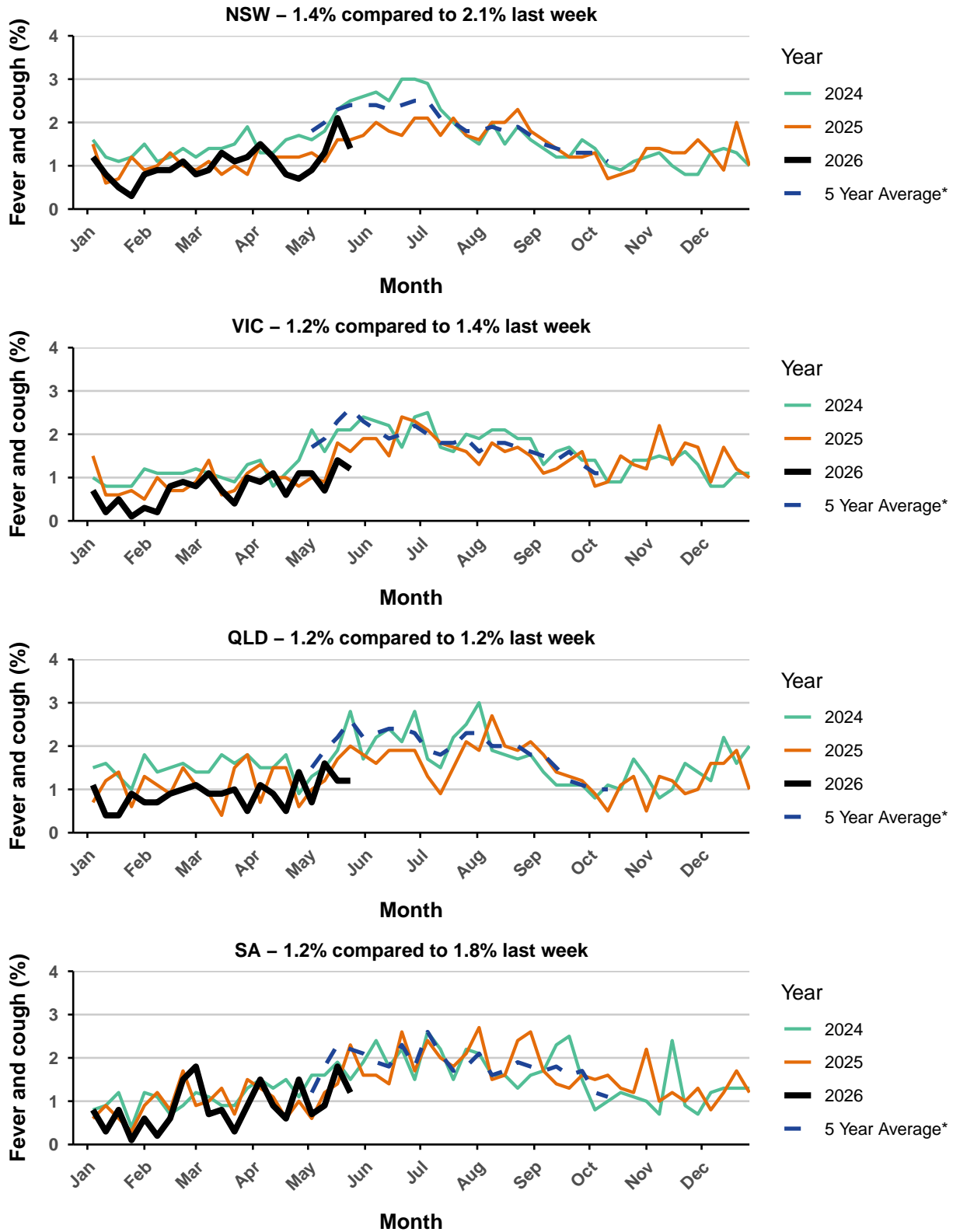
<sup>^</sup> Includes those who sought medical advice from a general practitioner, Aboriginal and Torres Strait Islander health clinic, COVID-19 clinic, emergency department, or were admitted to hospital for fever and cough.

**Figure 6 - Respiratory illness activity by age group**

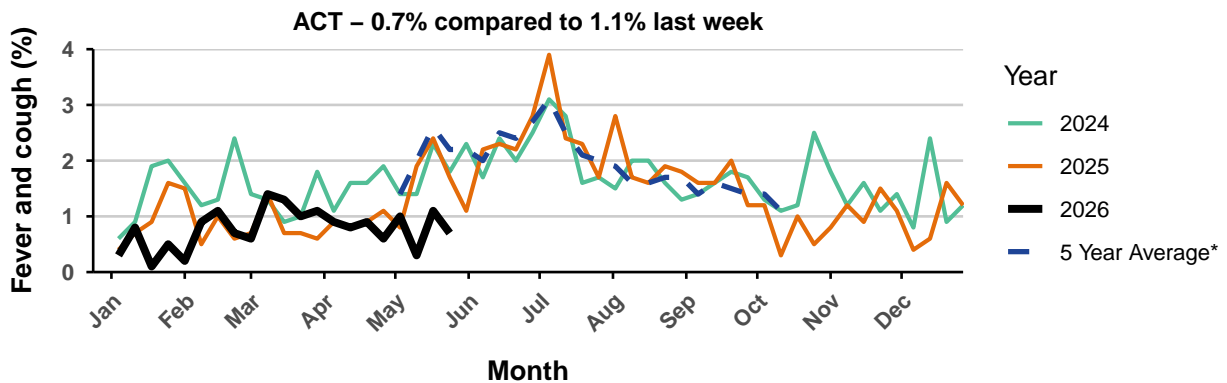
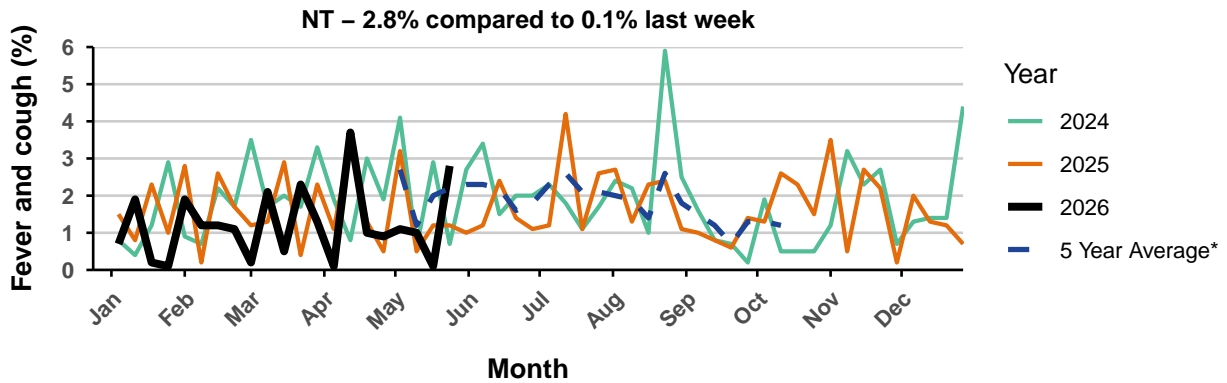
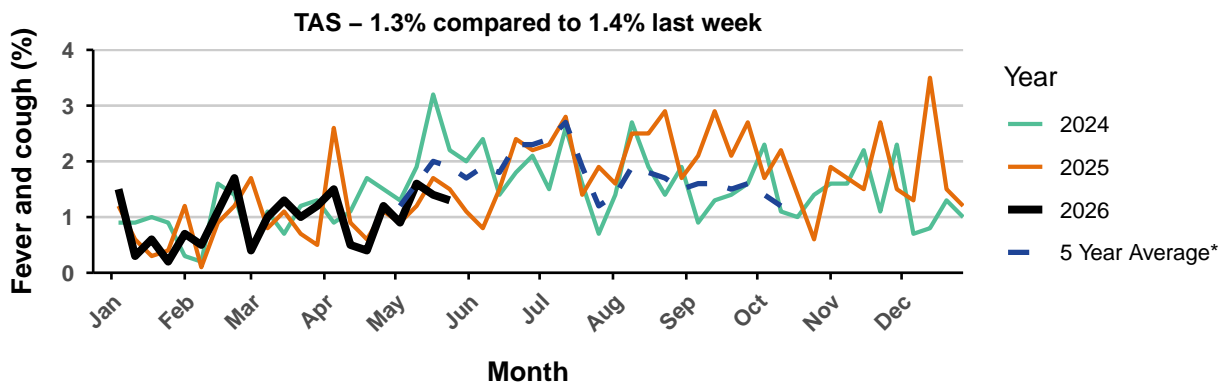
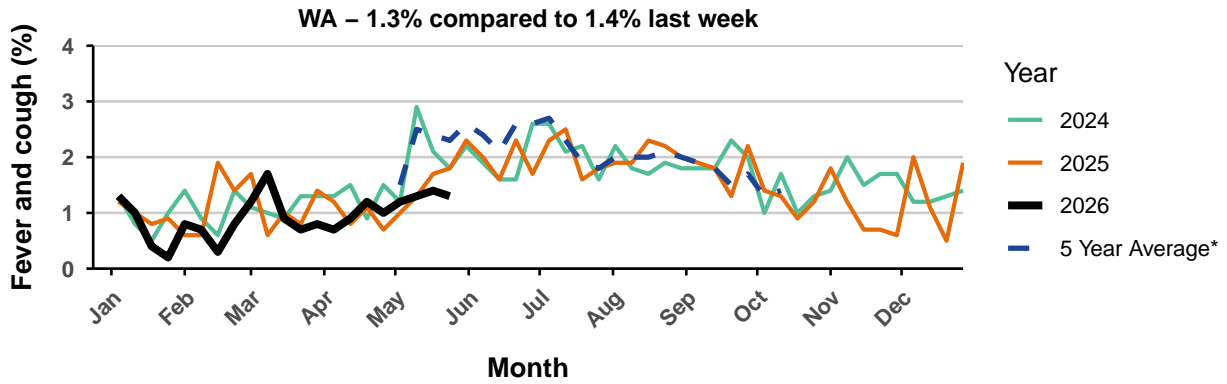


\* n = current reporting week participant count. Use caution when interpreting chart where n is low (e.g. less than 1000).

Figure 7 - Respiratory illness activity by state/territory (age standardised)



\* 5 year average is calculated using 2019, 2022, 2023, 2024, 2025 data.



\* 5 year average is calculated using 2019, 2022, 2023, 2024, 2025 data.

**Table 1 - Participation**
**46068** participants (**48921** last week)

Jurisdiction	Participants	Percent (%)	Participation Rate/ 100,000 Population
<b>NSW</b>	16,423	35.6	190.4
<b>VIC</b>	9,320	20.2	131.2
<b>QLD</b>	5,538	12.0	97.3
<b>SA</b>	3,975	8.6	208.3
<b>WA</b>	4,299	9.3	140.4
<b>TAS</b>	3,088	6.7	535.5
<b>NT</b>	632	1.4	238.0
<b>ACT</b>	2,793	6.1	574.5
<b>AUS</b>	46,068	100.0	166.2

**Table 2 - Influenza vaccination rates**

Group	Vaccinated (%)
<b>&lt;5 years</b>	51.4
<b>5-14 years</b>	39.9
<b>15-49 years</b>	48.3
<b>50-64 years</b>	61.0
<b>65+ years</b>	77.6
<b>Aboriginal and/or Torres Strait Islander</b>	59.0
<b>Working with patients</b>	70.4
<b>Overall</b>	66.3

**Table 3 - COVID-19 vaccination rates**

Group	Past 6 months	Past 12 months*	Never Vaccinated
<5 years	0.7	1.0	98.3
5-17 years	3.6	4.7	25.5
18-64 years	16.9	28.2	1.2
65-74 years	40.1	54.6	0.5
75+ years	47.1	60.8	0.6
Aboriginal and/or Torres Strait Islander	18.1	26.2	5.3
Working with patients	21.2	32.4	0.5
<b>Overall</b>	<b>29.6</b>	<b>41.7</b>	<b>3.0</b>

\* Those with a vaccination in the past 6 months are also included in the past 12 months column.

- Table does not include those with a COVID-19 vaccination greater than 12 months ago (ie: row totals will not add to 100%).

**Table 4 - Respiratory Syncytial Virus (RSV) immunisation rates**

Group	Immunised (%)
<2 years (via mother)	46.2
<2 years (via child after birth)	13.2
<2 years (both via mother and via child after birth)	8.5
50-59 years	1.4
60-74 years	11.5
75+ years	33.9
Aboriginal and/or Torres Strait Islander (60+ years)	21.6