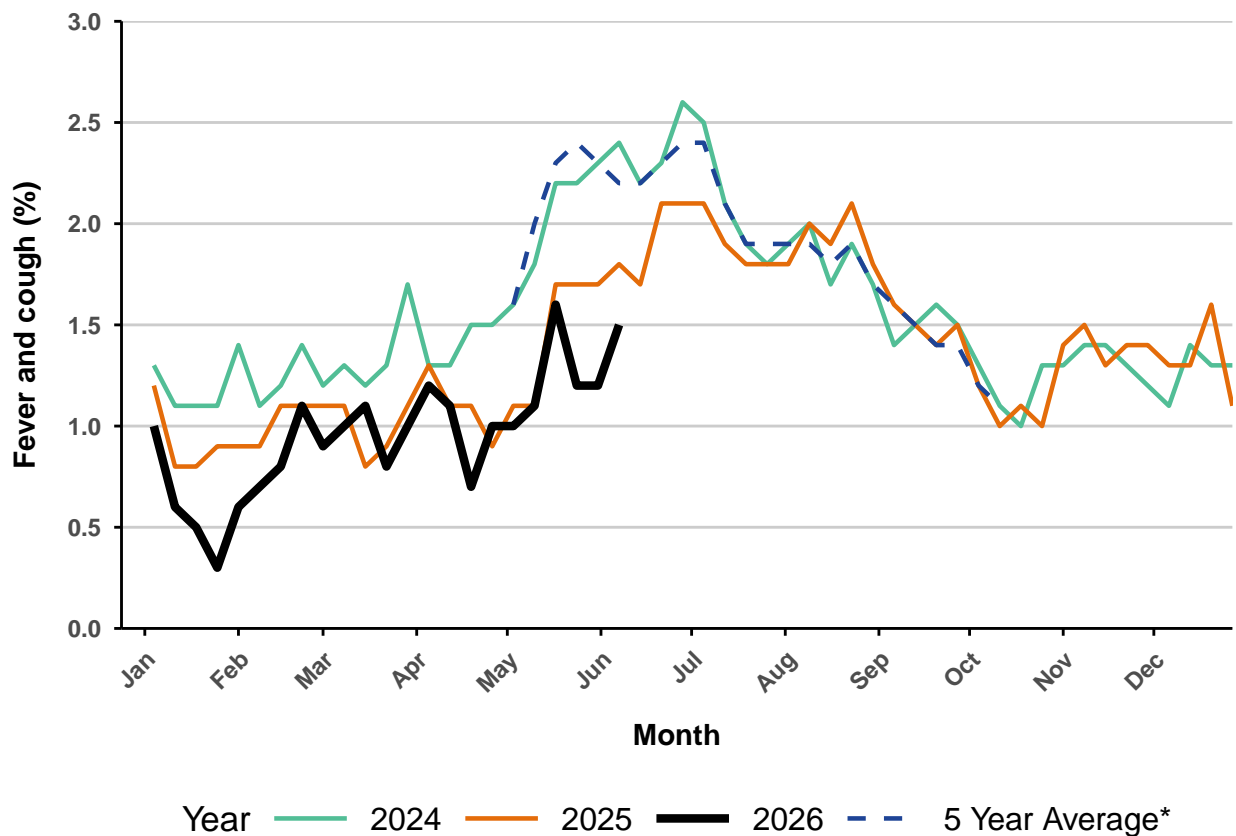


FluTracking Australia Weekly Report
Reporting week Monday 01 June 2026 - Sunday 07 June 2026
(Data used in this report received up to 09:00 AM, Thursday 11 June 2026)
Respiratory illness levels have increased this week
45658 participants this week
Figure 1 - Respiratory illness activity* (age standardised)

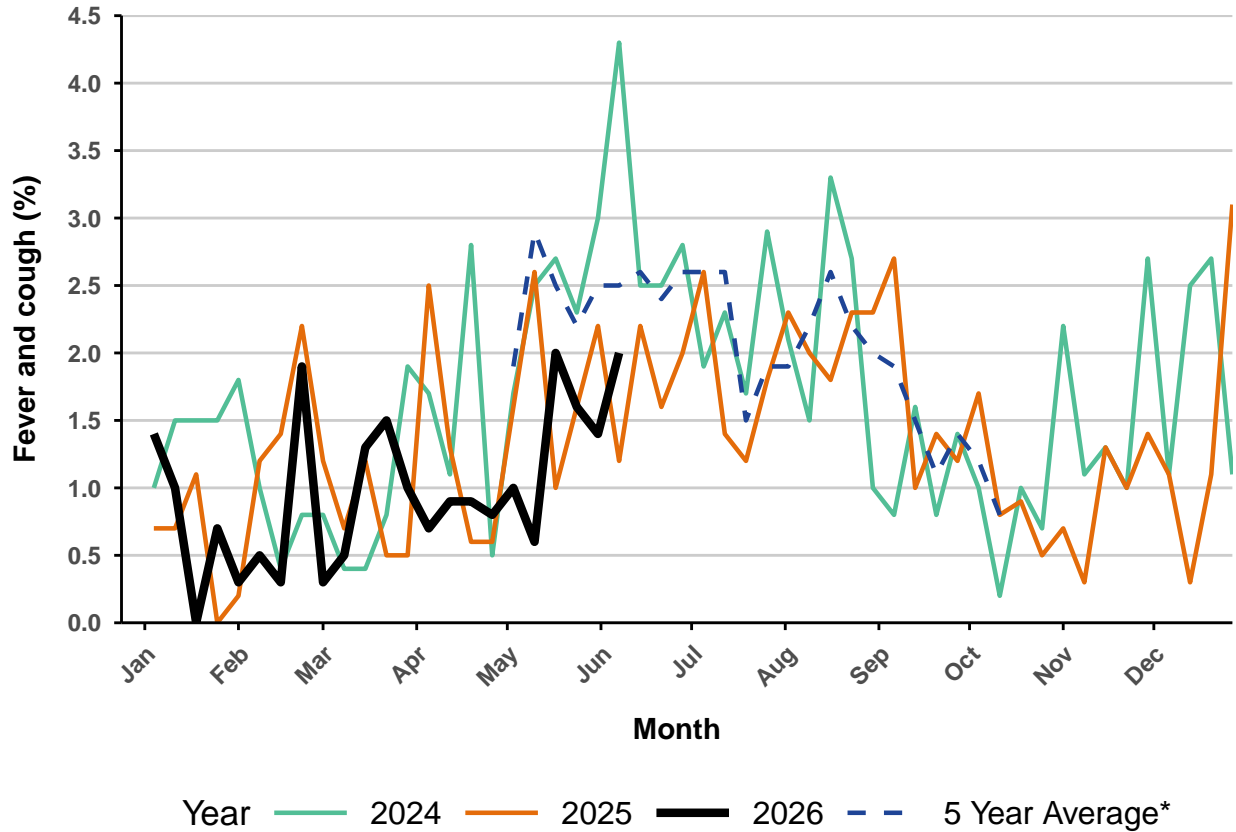
* Respiratory illness activity is defined as fever & cough for this report.

1.5% this week and 1.2% last week


* 5 year average is calculated using 2019, 2022, 2023, 2024, 2025 data.

Figure 2 - Respiratory illness activity among Aboriginal and Torres Strait Islander participants

2% this week and 1.4% last week

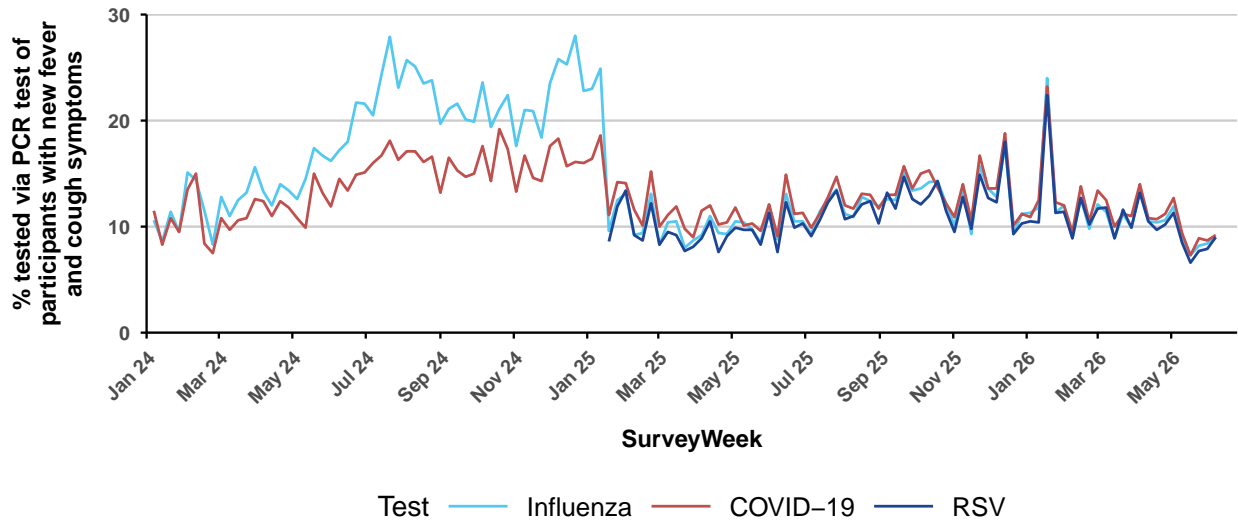


- Total number of Aboriginal and Torres Strait Islander participants this week = 397.

- Average number of Aboriginal and Torres Strait Islander participants in 2026 = 397.

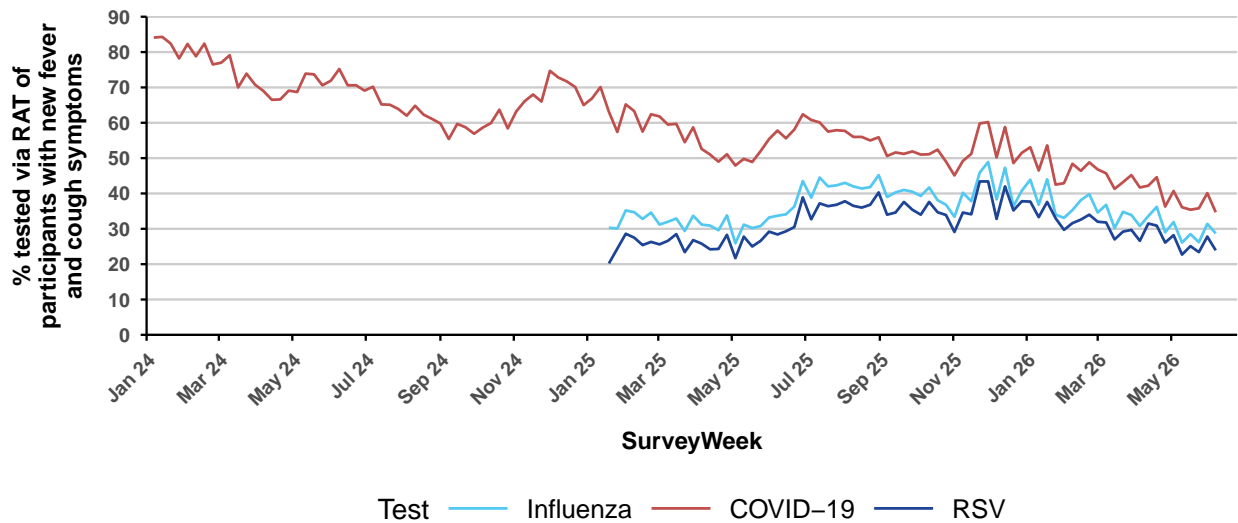
* 5 year average is calculated using 2019, 2022, 2023, 2024, 2025 data.

Figure 3a - Polymerase Chain Reaction (PCR) testing among participants reporting fever and cough symptoms



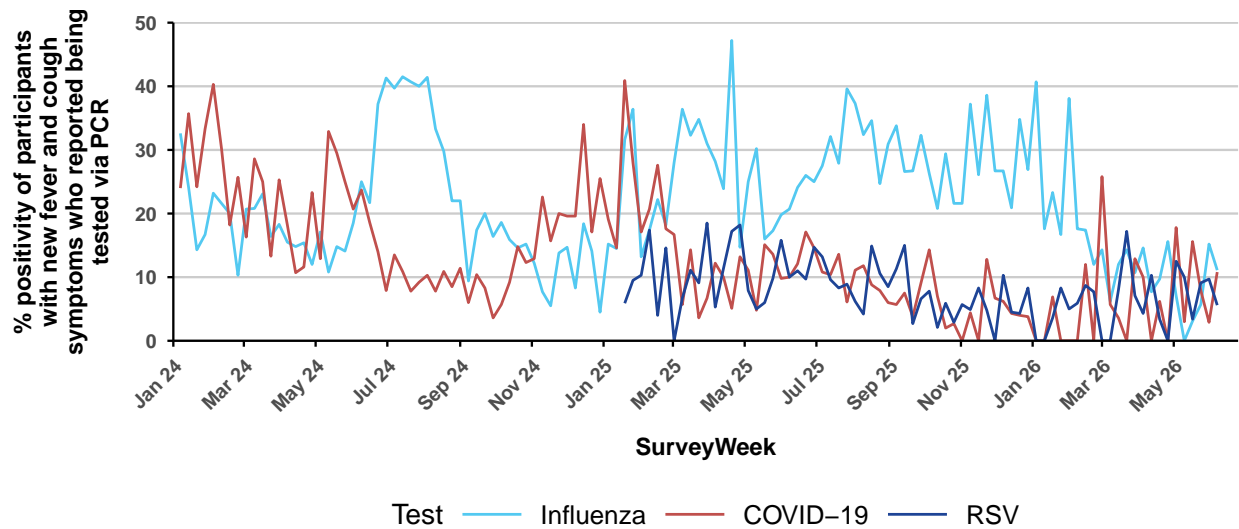
- Influenza PCR: **9%** (36/401) this week compared to **8.4%** last week.
- COVID-19 PCR: **9.2%** (37/401) this week compared to **8.7%** last week.
- RSV PCR: **9%** (36/401) this week compared to **7.9%** last week.

Figure 3b - Rapid Antigen Testing (RAT) among participants reporting fever and cough symptoms



- Influenza RAT: **28.7%** (115/401) this week compared to **31.4%** last week.
- COVID-19 RAT: **34.7%** (139/401) this week compared to **40.1%** last week.
- RSV RAT: **23.9%** (96/401) this week compared to **27.8%** last week.

Figure 4a - PCR test percent positivity among participants reporting fever and cough symptoms

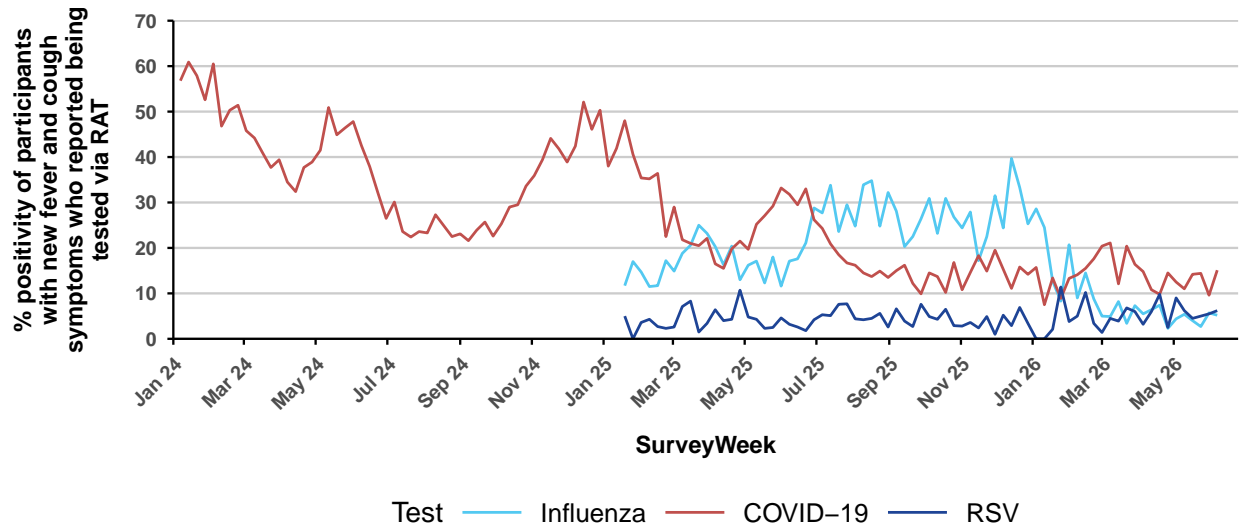


- Influenza PCR: **11.1% (4/36)** this week compared to **15.2%** last week.
(Denominator is participants who self-reported fever and cough symptoms and tested via influenza PCR).

- COVID-19 PCR: **10.8% (4/37)** this week compared to **2.9%** last week.
(Denominator is participants who self-reported fever and cough symptoms and tested via COVID-19 PCR).

- RSV PCR: **5.6% (2/36)** this week compared to **9.7%** last week.
(Denominator is participants who self-reported fever and cough symptoms and tested via RSV PCR).

Figure 4b - RAT percent positivity among participants reporting fever and cough symptoms

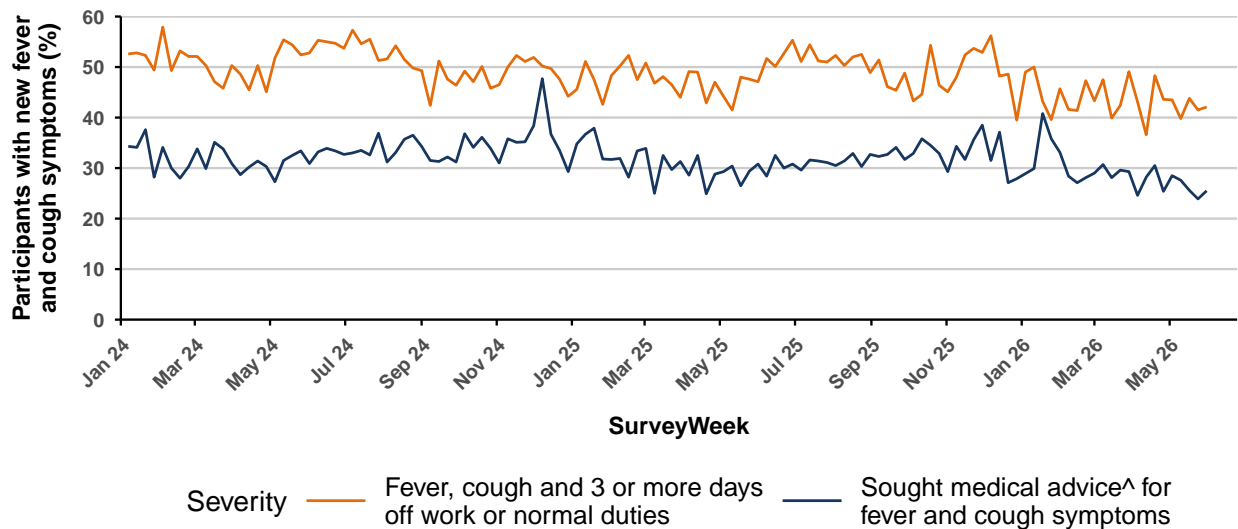


- Influenza RAT: **5.2% (6/115)** this week compared to **5.7%** last week.
(Denominator is participants who self-reported fever and cough symptoms and tested via influenza RAT).

- COVID-19 RAT: **15.1% (21/139)** this week compared to **9.6%** last week.
(Denominator is participants who self-reported fever and cough symptoms and tested via COVID-19 RAT).

- RSV RAT: **6.2% (6/96)** this week compared to **5.5%** last week.
(Denominator is participants who self-reported fever and cough symptoms and tested via RSV RAT).

Figure 5 - Severity of respiratory illness activity



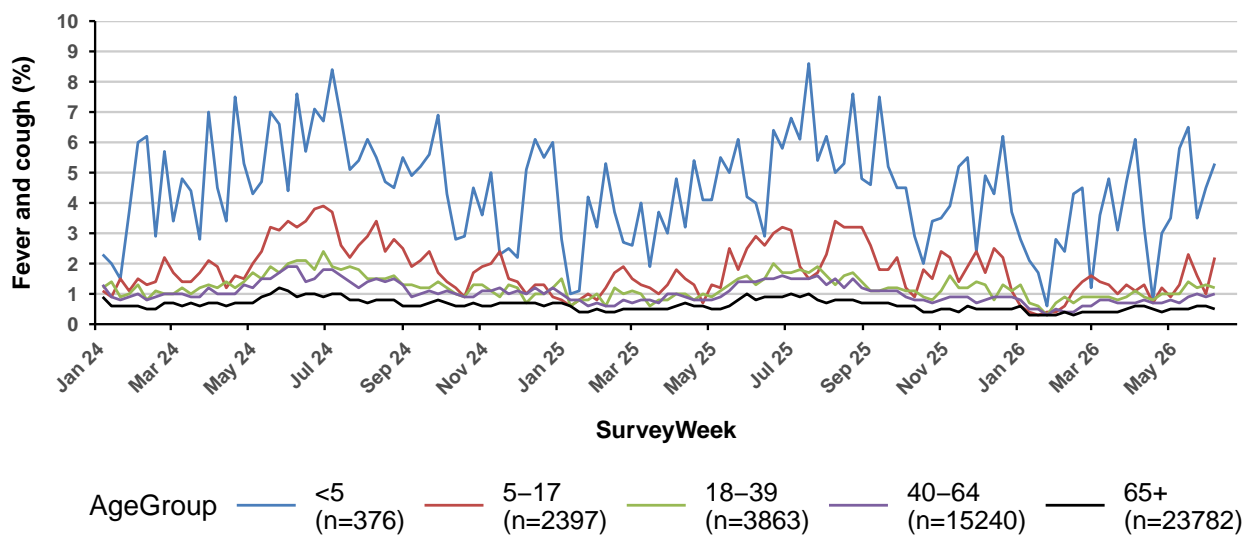
- Fever and cough with an absence of ≥ 3 days: **42.1% (165/392)** this report* compared to **41.5%** last report.

- Sought medical advice[^] for fever and cough symptoms: **25.5% (100/392)** this report* compared to **23.9%** last report.

* Data in this figure is from participants reporting incident fever and cough symptoms commencing last week who were absent ≥ 3 days or sought medical advice last week OR this week due to their ongoing symptoms. Please visit <https://info.flutracking.net/insights/> for more information.

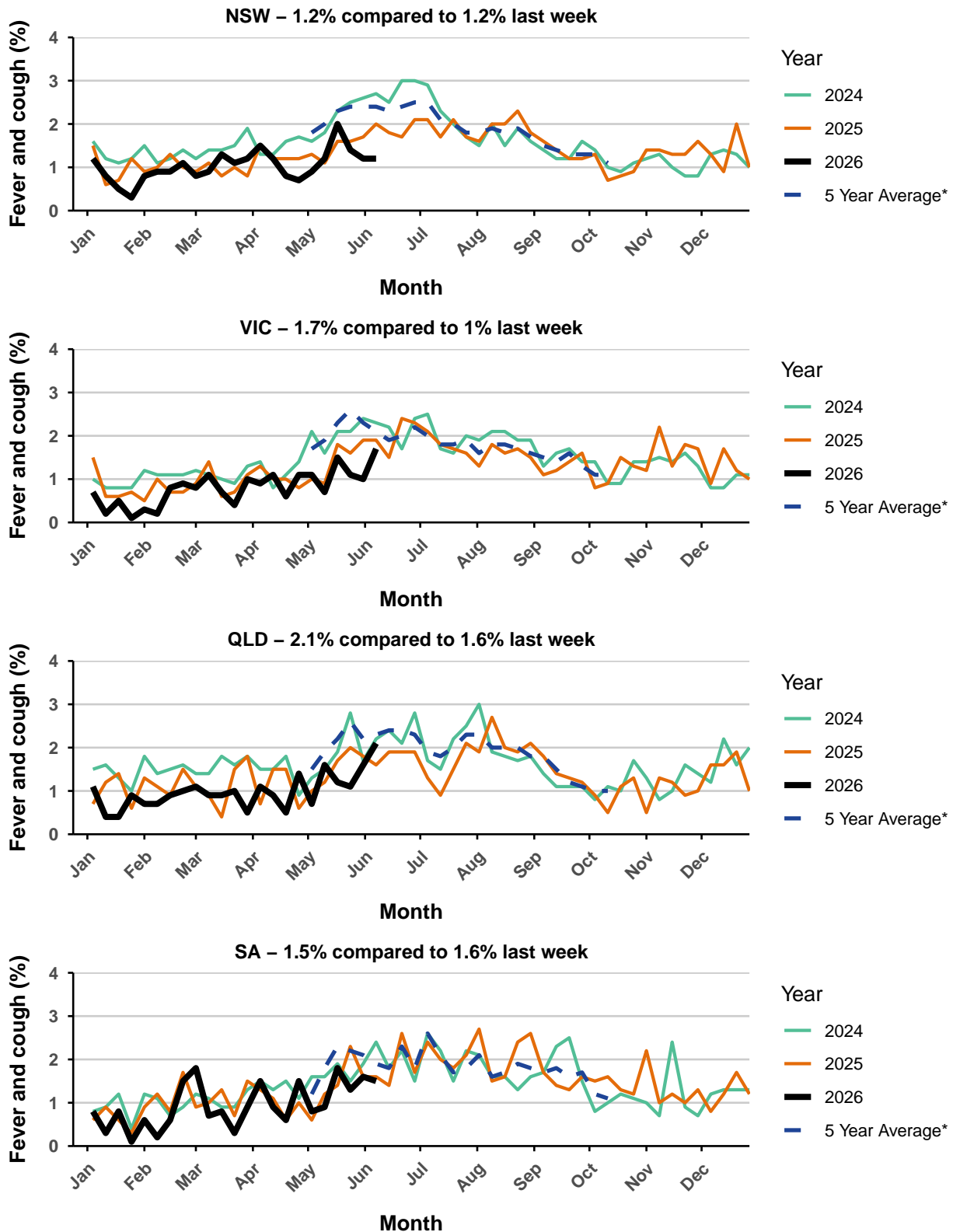
[^] Includes those who sought medical advice from a general practitioner, Aboriginal and Torres Strait Islander health clinic, COVID-19 clinic, emergency department, or were admitted to hospital for fever and cough.

Figure 6 - Respiratory illness activity by age group

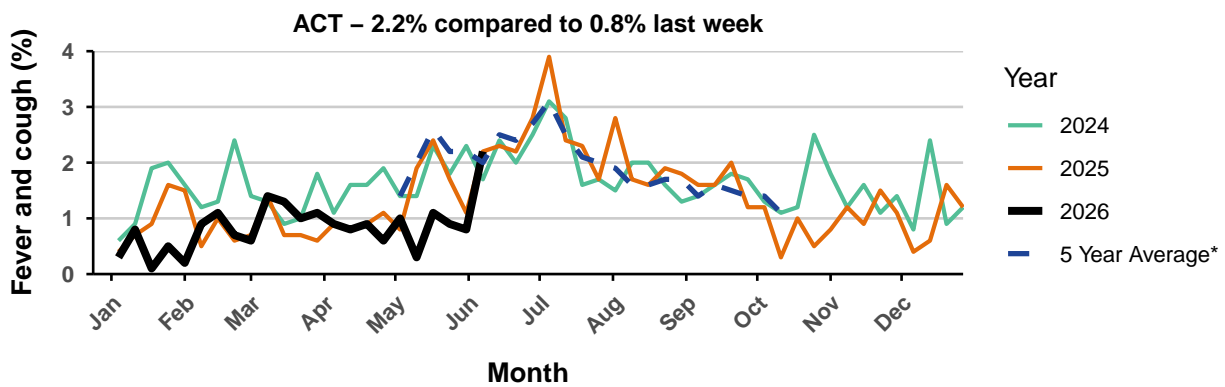
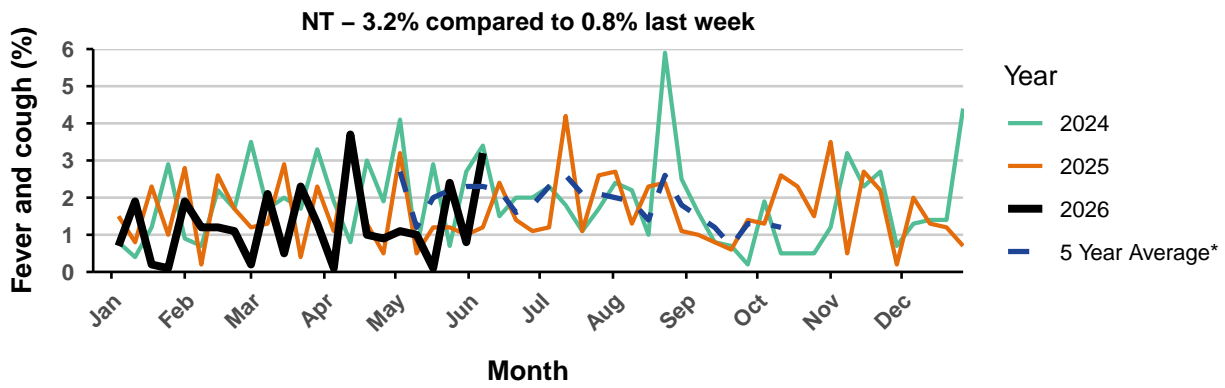
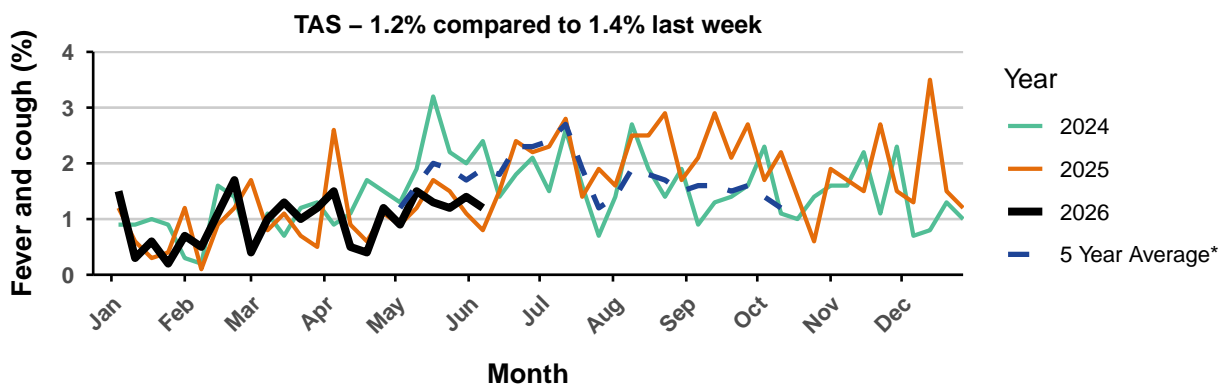
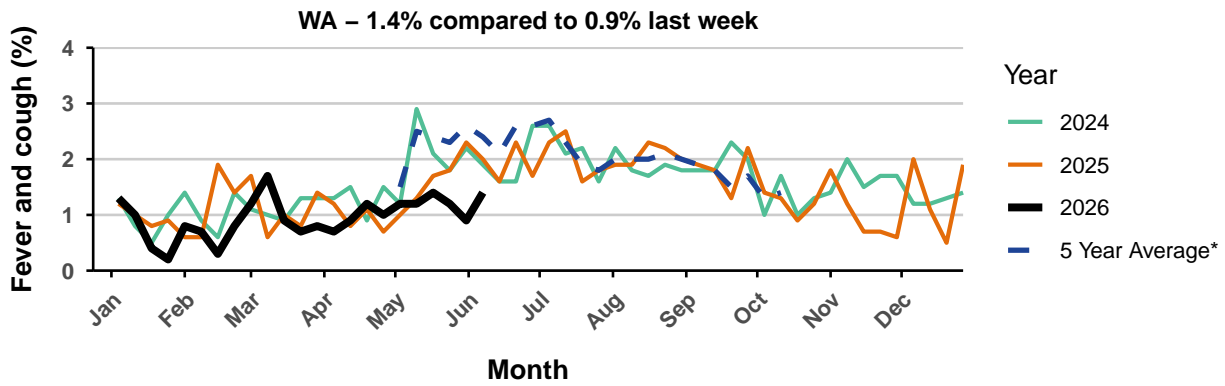


* n = current reporting week participant count. Use caution when interpreting chart where n is low (e.g. less than 1000).

Figure 7 - Respiratory illness activity by state/territory (age standardised)



* 5 year average is calculated using 2019, 2022, 2023, 2024, 2025 data.



* 5 year average is calculated using 2019, 2022, 2023, 2024, 2025 data.

Table 1 - Participation
45658 participants (**48517** last week)

Jurisdiction	Participants	Percent (%)	Participation Rate/ 100,000 Population
NSW	16,267	35.6	188.6
VIC	9,206	20.2	129.6
QLD	5,539	12.1	97.3
SA	3,887	8.5	203.7
WA	4,272	9.4	139.5
TAS	3,059	6.7	530.4
NT	647	1.4	243.7
ACT	2,781	6.1	572.0
AUS	45,658	100.0	164.7

Table 2 - Influenza vaccination rates

Group	Vaccinated (%)
<5 years	56.4
5-14 years	50.0
15-49 years	54.2
50-64 years	68.4
65+ years	83.4
Aboriginal and/or Torres Strait Islander	61.2
Working with patients	77.2
Overall	72.8

Table 3 - COVID-19 vaccination rates

Group	Past 6 months	Past 12 months*	Never Vaccinated
<5 years	0.8	1.1	98.4
5-17 years	3.6	4.5	25.3
18-64 years	18.8	27.1	1.2
65-74 years	44.0	54.6	0.5
75+ years	51.7	61.7	0.6
Aboriginal and/or Torres Strait Islander	19.4	25.4	6.0
Working with patients	24.0	32.3	0.5
Overall	32.7	41.6	2.9

* Those with a vaccination in the past 6 months are also included in the past 12 months column.

- Table does not include those with a COVID-19 vaccination greater than 12 months ago (ie: row totals will not add to 100%).

Table 4 - Respiratory Syncytial Virus (RSV) immunisation rates

Group	Immunised (%)
<2 years (via mother)	54.2
<2 years (via child after birth)	16.7
<2 years (both via mother and via child after birth)	4.2
50-59 years	1.4
60-74 years	11.9
75+ years	48.0
Aboriginal and/or Torres Strait Islander (60+ years)	21.4